

BOMAC

エクストラ ワークス エクストラ ストロング

WHEEL EXCAVATOR



**STRONG POWER &
HIGH DURABILITY**



**FUEL SAVING &
EFFICIENCY**



**SAFE FOR THE
ENVIRONMENT**

BOMAC Wheel Excavator are highly flexible, working either on-road or off-road. The machine provides versatility, allowing you to working with higher efficiency and travel at high speeds in the comfort of your cab. Our fuel-efficient engines and well-matched components deliver top power and low-emissions for environmental care.

DAFTAR ISI

● BE69W-B	1
● BE69W-9Y	3
● BE82W-L	5
● BE87W-9X	7
● BE91W-Y	9
● BE94W-9Y	11
● BE94W-9C	13
● BE110W-9B	15
● BE111W-9C	17
● BE111W-9B	19
● BE116W-9C	21

BE69W-B

Specification

Operation weight		6900 Kg
Bucket capacity		0.3 M³
Engine	Model	Yanmar 4TNV94L-BVTY2C
	Displacement	3.054L
	Rated power/speed	36.2 kW / 2100 rpm
	Maximum torque	193.2~210.6N. m/1260 ± 100 rpm
Optional engine	Model	Yanmar 4TNV98-ZCSLKC
	Displacement	3.319L
	Rated power/speed	46.3 kW / 2200 rpm
	Maximum torque	223.3~243.5N.m/1600±100 rpm
Speed	Max. travel speed	30 km/h
	Swing speed	11 rpm
	Max. grade ability	30°
Hydraulic and liquid capacity	Pump type	VariableX2 + GearX2
	P1 , P2 pressure	24 MPa
	Flow rate P1, P2	60.5 x 2 L/min
	P3 Pressure	20.6 MPa
	Flow rate P3	40.3 L/min
	Hydraulic tank capacity	150 L
	Fuel tank capacity	150 L
	Engine fuel tank capacity	12 L



YANMAR
ENGINE

WHEEL EXCAVATOR



6900 KG Operation Weight



YANMAR Engine



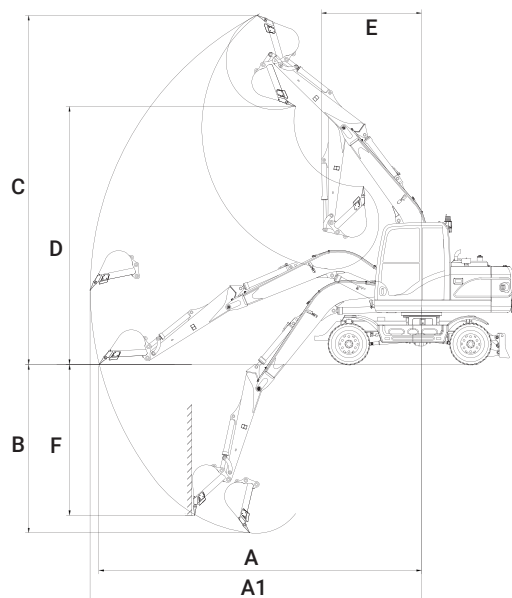
Fuel Saving



Japanese YANMAR engine, stronger power, lower fuel consumption, 30% fuel saving.

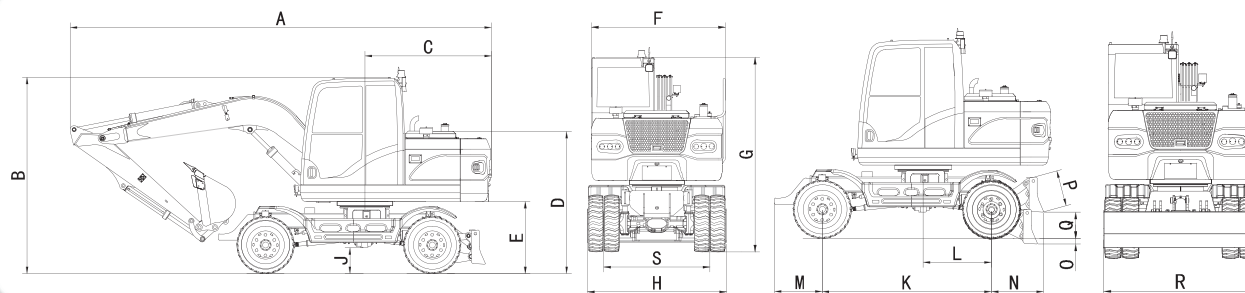
- ◆ Rexroth three pump combined flow hydraulic system can maximize the power output by the engine. It can play an excellent role in both high load operation and fine operation. It can provide strong power, reduce fuel consumption to the maximum extent, and greatly improve operation efficiency.
- ◆ Strong working force, fast action, coordinated compound action, high reliability and long practical life.

OPERATING RANGE



A1	Max. digging radius	6538 mm
A	Max. digging radius on ground	6361 mm
B	Max. digging depth	3320 mm
C	Max. digging height	6888 mm
D	Max. dumping height	5093 mm
E	Minimum turning radius	1974 mm
F	Max. vertical digging depth	2975 mm
	Bucket digging force	56 kN
	Bucket arm digging force	38 kN

MAIN DIMENSION



A	Total length	6066 mm	K	Wheel Tread	2400 mm
B	Total height	2880 mm	L	Distance of swing center to rear wheel	966 mm
C	Counter weight turning radius	1820 mm	M	Front extension	668 mm
D	Hood height	2052 mm	N	Back extension	740 mm
E	Counter weight ground clearance	1040 mm	O	Maximum reduction of the dozer blade	70 mm
F	Upper structure width	1944 mm	P	Height of dozer blade	510 mm
G	Cab height	2880 mm	Q	Maximum lift of dozer blade	377 mm
H	Total Tire width	1990 mm	R	Overall width of dozer blade	2026 mm
J	Minimum ground clearance	380 mm	S	Wheel / Base	1540 mm



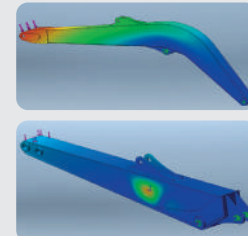
LUXURIOUS, COMFORTABLE, AND ERGONOMIC OPERATION SPACE

- ◆ All operation handles and switch buttons are ergonomically designed.
- ◆ The gearbox lubrication monitoring system is added to automatically alarm when the pressure is low.
- ◆ The adjustable direction indicator can adjust the angle according to your own needs.
- ◆ Vertical air conditioner outlet, better cooling effect.
- ◆ Add the foot break switch, customers can manually break or foot break.



SECURITY AND SAFETY DESIGN

- ◆ Add rear view camera rear lighting, makes reversing safer no matter day or night.
- ◆ Add the work warning light to warn the surrounding personnel at any time. It is strictly prohibited to approach the work scope.
- ◆ Fixed base of license plate and license plate lamp are added to meet the national licensing requirements.



REASONABLE & RELIABLE STRUCTURE

After the optimization of simulation finite element analysis, the structure of boom and stick is more reasonable and reliable, and service life is longer.



EQUIPPED WITH WHEEL REDUCTION AXLE, OPTIMIZED AND UPGRADED 280 GEARBOX AND SPLIT TYPE POWER TAKE-OFF BOX

- ◆ Equipped with wheel side reduction bridge, it has stronger driving force and better trafficability.
- ◆ After optimization and upgrading of 280 gearbox, the internal gear module is increased, the first shaft is thickened, and the diameter of clutch plate is increased, which greatly improves the transmission torque.
- ◆ The separated power take-off separates the operation from the traveling transmission, greatly improving the service life of the transmission system.



ALUMINUM ALLOY GAS CYLINDER IS ADOPTED, & AIR FILTER, AUTOMATIC DRAIN VALVE & QUICK AIR CONNECTION ARE ADDED

- ◆ Aluminum alloy gas cylinder is used to avoid the rust in the gas cylinder.
- ◆ Added air filter to filter impurities in the air.
- ◆ Automatic drain valve, the moisture in the gas cylinder is discharged automatically, without artificial drainage.
- ◆ Quick air circuit connector is convenient for users to use pneumatic grease gun for oiling and tire inflation.



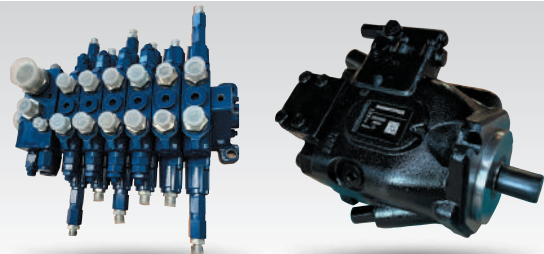
POINT INSPECTION AND MAINTENANCE OBJECTS ARE WITHIN REACH

- ◆ The layout of all hydraulic components is reasonable, open the hood for maintenance.
- ◆ The engine, air conditioner, brake air circuit and other components are all placed behind the cab, open the side door for maintenance.
- ◆ Electrical parts and fuses are all under the seat, which can be maintained after being pulled out.

BE69W-9Y

Specification

Machine weight		6900 Kg
Bucket capacity		0.3 M³
Engine	Model	YC4DK70-T305
	Displacement	3.621L
	Rated power/speed	50 kW / 2200 rpm
	Maximum torque	270N.m/(1400-1700) r/min
Speed	Max. travel speed	28 km/h
	Swing speed	11 rpm
	Max. grade ability	30°
Hydraulic and liquid capacity	Pump type	Load Sensitive System
	Pressure	24 MPa
	Flow rate	158 L/min
	Hydraulic tank capacity	150 L
	Fuel tank capacity	150 L
Engine fuel tank capacity		12 L



POWERFULL ENGINE

STRONG, DURABLE & FUEL EFFICIENT ENGINE

- ◆ The engine is equipped with the BOSCH common rail system, which is economical and fuel-efficient, with high matching with the whole vehicle, stable and reliable.
- ◆ Lower vibration, lower noise, and more comfortable driving experience.
- ◆ The maintenance period is increased to 500 hours, and the service life is more than 20000 hours.
- ◆ Remote monitoring and control can be achieve by using the technology of Artificial Intelligence of Things (AIoT).

WHEEL EXCAVATOR



6900 KG Operation Weight

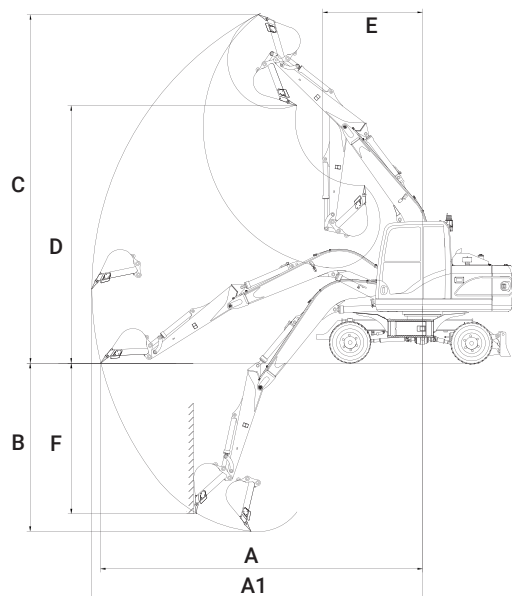


Strong & Durable



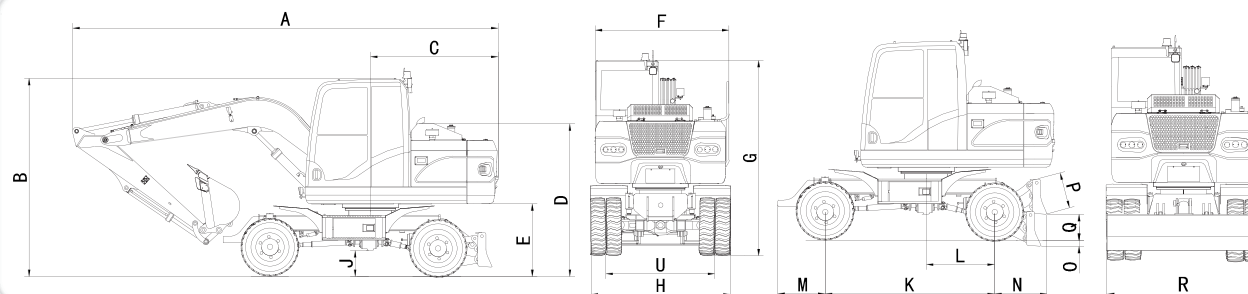
Fuel Saving

OPERATING RANGE



A1	Max. digging radius	6538 mm
A	Max. digging radius on ground	6361 mm
B	Max. digging depth	3320 mm
C	Max. digging height	6888 mm
D	Max. dumping height	5093 mm
E	Minimum turning radius	1974 mm
F	Max. vertical digging depth	2975 mm
	Bucket digging force	56 KN
	Bucket arm digging force	38 KN

MAIN DIMENSION



A	Total length	6066 mm	K	Wheel Tread	2400 mm
B	Total height	2880 mm	L	Distance between swing center to rear axle	966 mm
C	Counter weight turning radius	1820 mm	M	Front extension	668 mm
D	Hood height	2167 mm	N	Back extension	740 mm
E	Counter weight ground clearance	1040 mm	O	Maximum reduction of the dozer blade	70 mm
F	Upper structure width	1944 mm	P	Height of dozer blade	510 mm
G	Cab height	2880 mm	Q	Maximum lift of dozer blade	377 mm
H	Total Tire width	1990 mm	R	Overall width of dozer blade	2026 mm
J	Minimum ground clearance	380 mm	U	Wheel / Base	1540 mm



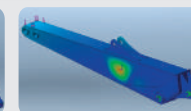
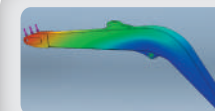
LUXURIOUS AND COMFORTABLE OPERATION SPACE, DESIGNED WITH ERGONOMIC CONCEPT

The design concept of "driver centered" minimizes the noise and vibration inside the cab. At the same time, it has an air conditioning system to meet the needs of four seasons, adjustable steering gear, ergonomically designed operating handle and switch buttons, and multifunctional instrument panel to improve the comfort and convenience of operation.



SECURITY AND SAFETY DESIGN

- ◆ Add rear view camera rear lighting, makes reversing safer no matter day or night.
- ◆ Add the work warning light to warn the surrounding personnel at anytime. It is strictly prohibited to approach the work scope.
- ◆ Fixed base of license plate and license plate lamp are added to meet the national licensing requirements.
- ◆ Parallel radiator, full steel mesh back door, increase ventilation, improving the cooling efficiency, the back lights inside the counterweight completely, avoid the collision at the complex conditions working.



REASONABLE & RELIABLE STRUCTURE

The use of more advanced computer three-dimensional design, after many reliability tests, extends the service life of the equipment and creates higher added value for customers.



ALUMINUM ALLOY GAS CYLINDER IS ADOPTED, & AIR FILTER, AUTOMATIC DRAIN VALVE & QUICK AIR CONNECTION ARE ADDED

- ◆ Aluminum alloy gas cylinder is used to avoid the rust in the gas cylinder.
- ◆ Added air filter to filter impurities in the air.
- ◆ Automatic drain valve, the moisture in the gas cylinder is discharged automatically, without artificial drainage.
- ◆ Quick air circuit connector is convenient for users to use pneumatic grease gun for oiling and tire inflation.

ROUTINE INSPECTION AND MAINTENANCE ARE MORE CONVENIENT

- ◆ The layout of all hydraulic components is reasonable, open the hood for maintenance.
- ◆ The engine, air conditioner, brake air circuit and other components are all placed behind the cab, open the side door for maintenance.

BE82W-L

Specification

Operation weight		8200 Kg
Bucket capacity		0.3 M³
Engine	Model	Yanmar 4TNV98-ZCSLK
	Displacement	3.319 L
	Rated power/speed	44 kW / 2200 rpm
	Maximum torque	223.3~243.5N.m/1600±100) r/min
Speed	Max. travel speed	30 km/h
	Swing speed	10.5 rpm
	Max. grade ability	30°
Hydraulic and liquid capacity	Hydraulic system	Load Sensitive System Rexroth
	Pump type	Variable X1
	Pressure	25 MPa
	Flow rate	158.4 L/min
	Hydraulic tank capacity	118 L
	Fuel tank capacity	170 L
Engine fuel tank capacity		12 L



YANMAR ENGINE

Japanese YANMAR engine, stronger power, lower fuel consumption, 30% fuel saving.

- ◆ Rexroth three pump combined flow hydraulic system can maximize the power output by the engine. It can play an excellent role in both high load operation and fine operation. It can provide strong power, reduce fuel consumption to the maximum extent, and greatly improve operation efficiency.
- ◆ Strong working force, fast action, coordinated compound action, high reliability and long practical life.

WHEEL EXCAVATOR



8200 KG Operation Weight

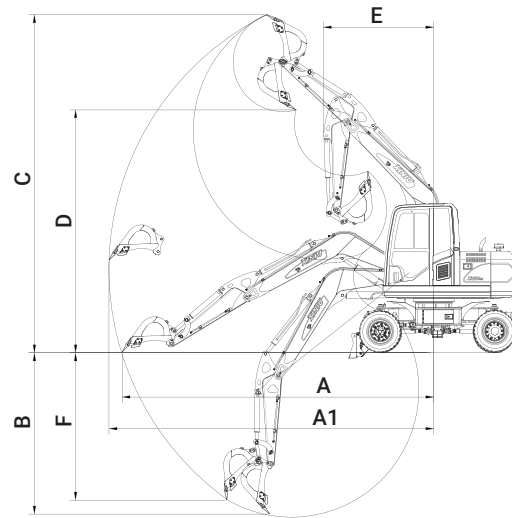


YANMAR Engine



Fuel Saving

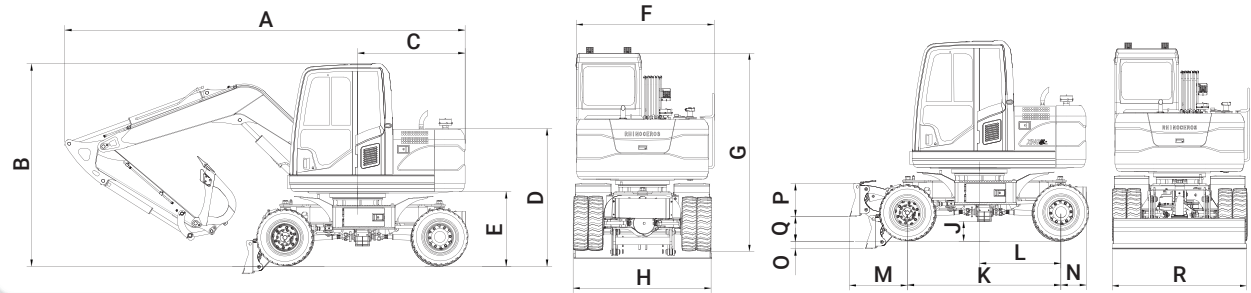
OPERATING RANGE



Working Device Boom 3.5m + Bucket arm 1.75m

A	Max. digging radius	6345 mm
A1	Max. digging radius on ground	6610 mm
B	Max. digging depth	3330 mm
C	Max. digging height	6820 mm
D	Max. dumping height	4945 mm
E	Minimum turning radius	2330 mm
F	Max. vertical digging depth	3055 mm
	Bucket digging force	58 KN
	Bucket arm digging force	40 KN

MAIN DIMENSION



A	Total length (Boom 3.5m + Bucket arm 1.75m)	6030 mm
B	Total height (Boom 3.5m + Bucket arm 1.75m)	3005 mm
C	Counter weight turning radius	1570 mm
D	Hood height	2010 mm
E	Counter weight ground clearance	1090 mm
F	Upper structure width	2085 mm
G	Cab height	2945 mm
H	Total Tire width	2090 mm
J	Minimum ground clearance	280 mm

K	Wheel Tread	2260 mm
L	Distance of swing center to rear wheel	1200 mm
M	Front extension	855 mm
N	Back extension	376 mm
O	Maximum reduction of the dozer blade	112 mm
P	Height of dozer blade	486 mm
Q	Maximum lift of dozer blade	365 mm
R	Overall width of dozer blade	2080 mm



FULL HYDRAULIC DRIVE, DOUBLE AXLE STEERING, OBTAINED THE INVENTION AND UTILITY MODEL PATENTS.

- ◆ Full hydraulic drive features: large transmission power, variable speed, low speed and large torque drive, no impact, high stability, with overload protection, effective protection of the bridge box transmission system.
- ◆ Double bridge steering features: reduce turning radius, reduce tire and ground friction. Using large torque to increase the vehicle bridge, improve the vehicle's passing and off-road performance.
- ◆ Chassis with super mining stability, self-balancing system and high and low speed switching system, four-wheel brake system, work more stable, driving more safe.



WORK SAFER WITH CLEANER DIESEL

Adopt the same rolling plastic diesel box with international first-line brand, make diesel cleaner and work safer. improves the strength and toughness of the turntable and the working device.



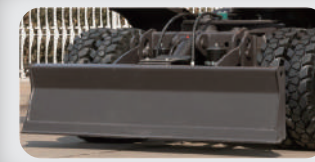
REASONABLE VALVES LAYOUT

Control valves, oilsource valves, solenoid valves and other reasonable layout, more convenient maintenance.



HEAT DISSIPATION EFFICIENCY

The use of parallel radiator, ventilation increased, greatly improved the heat dissipation efficiency.



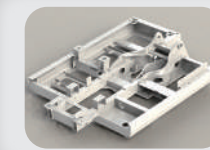
UPGRADED SHOVEL

Four connecting rod pushing shovel, the lifting height is increased, the passing property is good, the flat function is strengthened.



LUXURIOUS AND COMFORTABLE OPERATION SPACE, ERGONOMIC CONCEPT

New upgrade cabin, beautiful out-looking, cabin ergonomic design, front gear institutions, adjustable suspension seats, air conditioner, large-screen LCD display, open field of vision, Operating more comfortable.



REASONABLE & RELIABLE STRUCTURE

After the finite element analysis, the structure of the upper turntable and the working device is more reasonable, which greatly improves the strength and toughness of the turntable and the working device.

BE87W-9X

**BACK & FRONT
DOZER BLADE**

WHEEL EXCAVATOR



8700 KG Operation Weight



Strong & Durable



Fuel Saving

Specification

Operation weight		8700 Kg
Bucket capacity		0.3 M³
Engine	Model	XINCHAI 4D35ZG31
	Displacement	3.5 L
	Rated power/speed	60 kW / 2200 rpm
	Maximum torque	300N.m/(1600-1800) r/min
Speed	Max. travel speed	30 km/h
	Swing speed	12 rpm
	Max. grade ability	30°
Hydraulic and liquid capacity	Pump type	Gear X2 Gear Pump
	Pressure	20.6 MPa
	Flow rate	114 L/min
	Hydraulic tank capacity	175 L
	Fuel tank capacity	150 L
Engine fuel tank capacity		12 L

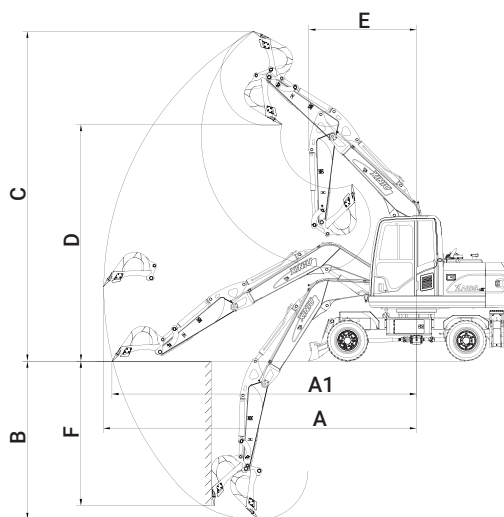


Back Dozer Blade

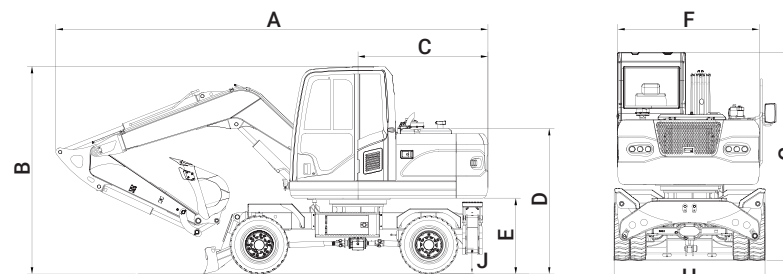
Front Dozer Blade

OPERATING RANGE

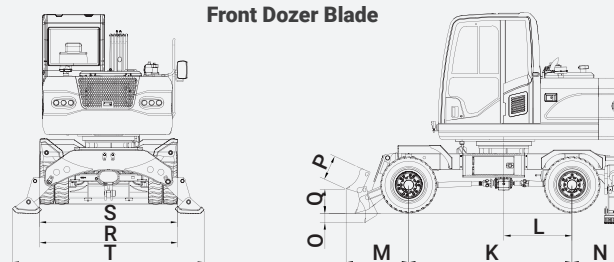
MAIN DIMENSION



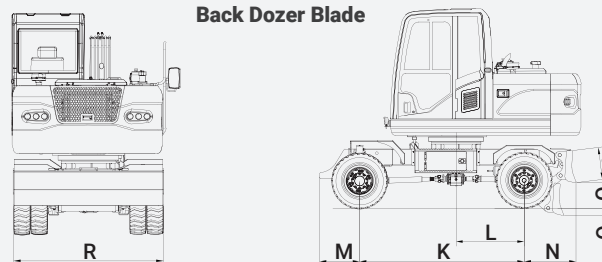
Working Device	Boom 3.3m + Bucket arm 1.75m	Boom 3.5m + Bucket arm 2.00m
A Max. digging radius	6323 mm	6787 mm
A1 Max. digging radius on ground	6144 mm	6585 mm
B Max. digging depth	3200 mm	3635 mm
C Max. digging height	6820 mm	7105 mm
D Max. dumping height	4935 mm	5230 mm
E Minimum turning radius	2177 mm	2334 mm
F Max. vertical digging depth	2912 mm	3325 mm
Bucket digging force	56 KN	56 KN
Bucket arm digging force	38 KN	36 KN



Front Dozer Blade



Back Dozer Blade



Dimension	Front dozer blade / rear outrigger	Rear dozer blade
A Total length		
Boom 3.3m + Bucket arm 1.75m	BE87W-9X-A 6052 mm	BE87W-9X-B 6052 mm
Boom 3.5m + Bucket arm 2.00m	BE87W-9X-C 6216 mm	BE87W-9X-D 6216 mm
B Total height		
Boom 3.3m + Bucket arm 1.75m	BE87W-9X-A 2932 mm	BE87W-9X-B 2932 mm
Boom 3.5m + Bucket arm 2.00m	BE87W-9X-C 2932 mm	BE87W-9X-D 2932 mm
C Counter weight turning radius	1786 mm	1786 mm
D Hood height	2054 mm	2054 mm
E Counter weight ground clearance	1070 mm	1070 mm
F Upper structure width	2000 mm	2000 mm
G Cab height	2932 mm	2932 mm
H Total tire width	2130 mm	1990 mm
J Minimum ground clearance	338 mm	338 mm
K Wheel tread	2400 mm	2400 mm
L Distance of swing center to rear wheel	1000 mm	1000 mm
M Front extension	920 mm	590 mm
N Back extension	754 mm	764 mm
O Maximum reduction of the dozer blade	150 mm	100 mm
P Height of dozer blade	360 mm	470 mm
Q Maximum lift of dozer blade	300 mm	390 mm
R Overall width of dozer blade	2138 mm	2000 mm
S Total width with outrigger back	2130 mm	-
T Total width with outrigger out	2965 mm	-



COMFORTABLE OPERATION SPACE

New upgrade cabin, beautiful out-looking, with ergonomic design concept, front gear institutions, adjustable suspension seats, air conditioner, open field of vision, Operating more comfortable.



INTERNATIONAL BRAND QUALITY

Imported International brand pump, main valve, quick moving, compound movement harmoniously, high reliability, long service time.



STRONG & FLEXIBLE MOBILIZATION

The overall box-type structure chassis, with reinforced front and rear driven axles, reinforcement gearbox, reinforcement up and down box, more load carry capacity. Front and rear driven axles with hub reduction, more passing ability, suitable for complex road, more driving power, suitable for climbing.



UPGRADED COOLING EFFICIENCY

Parataxis radiator, full steel mesh back door, increase ventilation, improving the cooling efficiency, the back lights hidden inside the counterweight completely, avoiding the collision at the complex conditions working.



REASONABLE & RELIABLE STRUCTURE

After the finite element analysis, the structure of the upper turntable and the working device is more reasonable, which greatly improves the strength and toughness of the turntable and the working device.

WHEEL EXCAVATOR

BE91W-Y

Specification

Operation weight		9100 Kg
Bucket capacity		0.3 M³
Engine	Model	Yanmar 4TNV98-ZCSLK
	Displacement	3.319 L
	Rated power/speed	46.3 kW / 2200 rpm
	Maximum torque	223.3~243.N. m/1600 ± 100 rpm
Optional engine	Model	Yanmar 4TNV98T-ZCSTYC
	Displacement	3.319L
	Rated power/speed	56.5 kW / 2200 rpm
	Maximum torque	273.3~298.2N.m/1650±100 rpm
Speed	Max. travel speed	30 km/h
	Swing speed	12 rpm
	Max. grade ability	30°
Hydraulic and liquid capacity	Hydraulic system	Load Sensitive System Rexorth
	Pump type	Variable X1
	P1 , P2 pressure	25 MPa
	Flow rate P1, P2	132 L/min
	Hydraulic tank capacity	175 L/min
	Fuel tank capacity	150 L
	Engine fuel tank capacity	12 L



9100 KG Operation Weight



YANMAR Engine



Fuel Saving



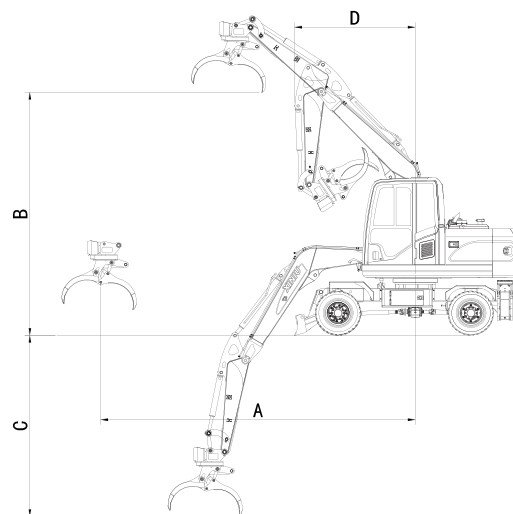
YANMAR
ENGINE

Japanese YANMAR engine, stronger power, lower fuel consumption, 30% fuel saving.

- ◆ Rexroth three pump combined flow hydraulic system can maximize the power output by the engine. It can play an excellent role in both high load operation and fine operation. It can provide strong power, reduce fuel consumption to the maximum extent, and greatly improve operation efficiency.
- ◆ Strong working force, fast action, coordinated compound action, high reliability and long practical life.



OPERATING RANGE

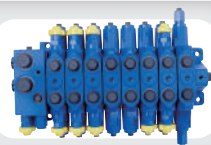


Working Device	Boom 3.5m + Bucket arm 2.00m	Boom 3.7m + Bucket arm 2.20m
A Max. grab radius	6272 mm	6600 mm
B Max. dumping height	4972 mm	5630 mm
C Max. grab depth	3789 mm	3740 mm
D Min. turning radius	2334 mm	2395 mm



INTERNATIONAL BRAND QUALITY

Imported International brand plunger pump, main valve, quick moving, compound movement harmoniously, high reliability, long service time.



COMFORTABLE OPERATION SPACE

New upgrade cabin, beautiful out-looking, with ergonomic design concept, front gear institutions, adjustable suspension seats, air conditioner, open field of vision, Operating more comfortable.



STRONG & FLEXIBLE MOBILITATION

The overall box-type structure chassis, with reinforced front and rear driven axles, reinforcement up and down box, more load carry capacity. Front and rear driven axles with hub reduction, more passing ability, suitable for complex road, more driving power, suitable for climbing.



UPGRADED COOLING EFFICIENCY

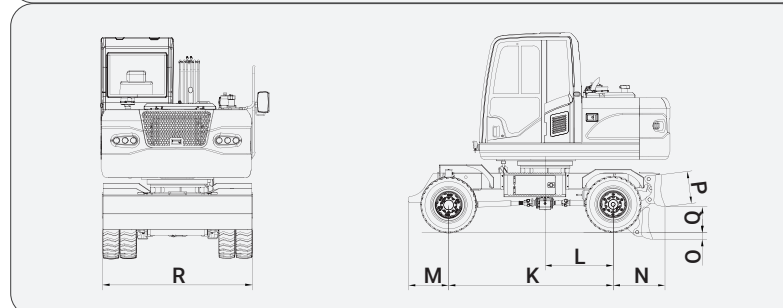
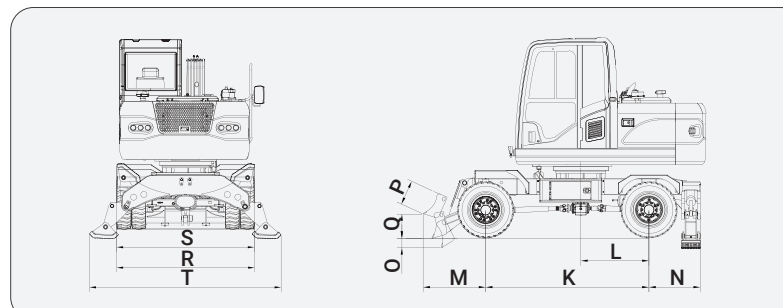
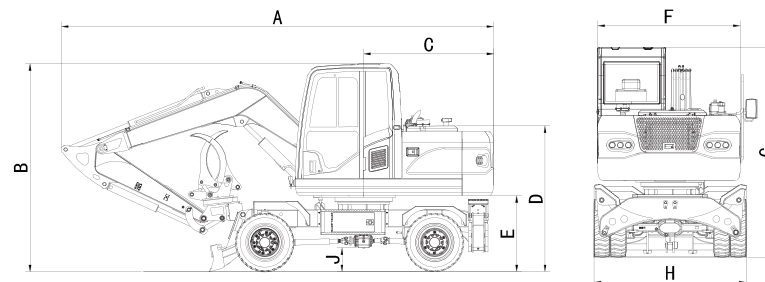
Parataxis radiator, full steel mesh back door, increase ventilation, improving the cooling efficiency, the back lights hidden inside the counterweight completely, avoiding the collision at the complex conditions working.



REASONABLE & RELIABLE STRUCTURE

After the finite element analysis, the structure of the upper turntable and the working device is more reasonable, which greatly improves the strength and toughness of the turntable and the working device.

MAIN DIMENSION



Dimension	Front dozer blade / rear outrigger	Rear dozer blade
A Total length		
Boom 3.5m + Bucket arm 2.00m	BE91W-Y-A 6266 mm	BE91W-Y-B 6266 mm
Boom 3.7m + Bucket arm 2.20m	BE91W-Y-C 6485 mm	BE91W-Y-D 6485 mm
B Total height		
Boom 3.5m + Bucket arm 2.00m	BE91W-Y-A 2932 mm	BE91W-Y-B 2932 mm
Boom 3.7m + Bucket arm 2.20m	BE91W-Y-C 2932 mm	BE91W-Y-D 2932 mm
C Counter weight turning radius	1836 mm	1836 mm
D Hood height	2054 mm	2054 mm
E Counter weight ground clearance	1070 mm	1070 mm
F Upper structure width	2000 mm	2000 mm
G Cab height	2932 mm	2932 mm
H Total tire width	2130 mm	1990 mm
J Minimum ground clearance	338 mm	338 mm
K Wheel tread	2400 mm	2400 mm
L Distance of swing center to rear axle	1000 mm	1000 mm
M Front extension	920 mm	590 mm
N Back extension	754 mm	764 mm
O Maximum reduction of the dozer blade	150 mm	100 mm
P Height of dozer blade	360 mm	470 mm
Q Maximum lift of dozer blade	300 mm	390 mm
R Overall width of dozer blade	2138 mm	2000 mm
S Total width with outrigger back	2130 mm	-
T Total width with outrigger out	2965 mm	-

BE94W-9Y

Specification

Operation weight		9400 Kg
Bucket capacity		0.3 M³
Engine	Model	YC4DK85-T302-DKDOWC
	Displacement	3.621L
	Rated power/speed	62.5 kW / 2200 rpm
	Maximum torque	340N.m/(1400-1700) r/min
Speed	Max. travel speed	35 km/h
	Swing speed	12 rpm
	Max. grade ability	30°
Hydraulic and liquid capacity	Hydraulic system	Load Sensitive System
	Pump type	Variable X1 Piston Pump
	Pressure P1, P2	32 MPa
	Flow rate P1, P2	176 L/min
	Hydraulic tank capacity	175 L
	Fuel tank capacity	150 L
	Engine fuel tank capacity	12 L



9400 KG Operation Weight



Strong & Durable



Fuel Saving



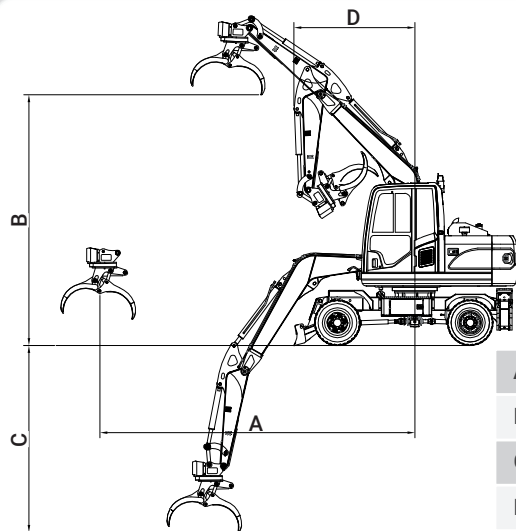
UPGRADED AIR FILTER

Equipped with upgraded high-end air filter, it can filter the dust and impurities in the air more effectively and prolong the life of the engine.

STRONG, DURABLE & FUEL EFFICIENT ENGINE

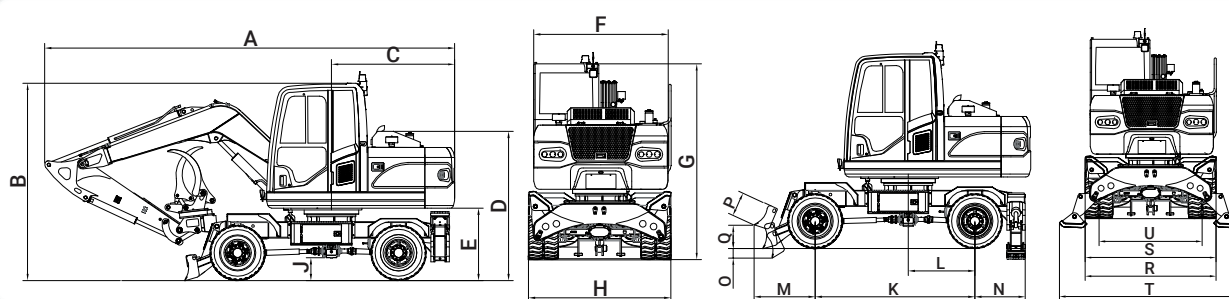
- ◆ The engine is equipped with the BOSCH common rail system, which is economical and fuel-efficient, with high matching with the whole vehicle, stable and reliable.
- ◆ Lower vibration, lower noise, and more comfortable driving experience.
- ◆ The maintenance period is increased to 500 hours, and the service life is more than 20000 hours.
- ◆ Remote monitoring and control can be achieved by using the technology of Artificial Intelligence of Things (AIoT).

OPERATING RANGE



A	Max. grab radius	6600 mm
B	Max. dumping height	5660 mm
C	Max. grab depth	3770 mm
D	Min turning radius	2395 mm

MAIN DIMENSION



A	Total length (Boom 3.7m + Bucket arm 2.20m)	6485 mm	L	Distance between swing center to rear axle	1000 mm
B	Total height (Boom 3.7m + Bucket arm 2.20m)	2932 mm	M	Front extension	920 mm
C	Counter weight turning radius	1836 mm	N	Back extension	754 mm
D	Hood height	2220 mm	O	Maximum reduction of the dozer blade	150 mm
E	Counter weight ground clearance	1100 mm	P	Height of dozer blade	360 mm
F	Upper structure width	2000 mm	Q	Maximum lift of dozer blade	300 mm
G	Cab height	2932 mm	R	Overall width of dozer blade	2138 mm
H	Total Tire width	2165 mm	S	Total width with outrigger back	2130 mm
J	Minimum ground clearance	338 mm	T	Total width with outrigger out	2965 mm
K	Wheel Tread	2400 mm	U	Wheel / Base	1700 mm

RELIABLE PLUNGER PUMP & MAIN VALVE



Large displacement load sensitive plunger pump and large diameter main valve are adopted, with fast action, coordinated compound action and high reliability. There is a boom holding valve inside the main valve to prevent the boom from falling.



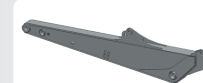
SECURITY AND SAFETY DESIGN

- ◆ Add rear view camera rear lighting, makes reversing safer no matter day or night.
- ◆ Add the work warning light to warn the surrounding personnel at anytime. It is strictly prohibited to approach the work scope.
- ◆ Fixed base of license plate and license plate lamp are added to meet the national licensing requirements.
- ◆ Parallel radiator, full steel mesh back door, increase ventilation, improving the cooling efficiency, the back lights inside the counterweight completely, avoid the collision at the complex conditions working.



LUXURIOUS AND COMFORTABLE OPERATION SPACE, DESIGNED WITH ERGONOMIC CONCEPT

- ◆ All operation handles and switch buttons are ergonomically designed.
- ◆ The adjustable direction indicator can adjust the angle according to your own needs.
- ◆ Vertical air conditioner outlet, better cooling effect.



REASONABLE & RELIABLE STRUCTURE

After the optimization of simulation finite element analysis, the structure of boom and stick is more reasonable and reliable, and service life is longer.



ALUMINUM ALLOY GAS CYLINDER IS ADOPTED, & AIR FILTER, AUTOMATIC DRAIN VALVE & QUICK AIR CONNECTION ARE ADDED

- ◆ Aluminum alloy gas cylinder is used to avoid the rust in the gas cylinder.
- ◆ Added air filter to filter impurities in the air.
- ◆ Automatic drain valve, the moisture in the gas cylinder is discharged automatically, without artificial drainage.
- ◆ Quick air circuit connector is convenient for users to use pneumatic grease gun for oiling and tire inflation.



ROUTINE INSPECTION AND MAINTENANCE ARE MORE CONVENIENT

- ◆ The layout of all hydraulic components is reasonable, open the hood for maintenance.
- ◆ The engine, air conditioner, brake air circuit and other components are all placed behind the cab, open the side door for maintenance.

BE94W-9C

Specification

Operation weight		9400 Kg
Bucket capacity		0.3 M³
Engine	Model	YC4DK85-T301-DKDOWC
	Displacement	3.621L
	Rated power/speed	62.5 kW / 2200 rpm
	Maximum torque	340N.m/(1400-1700) r/min
Speed	Max. travel speed	35 km/h
	Swing speed	12 rpm
	Max. grade ability	30°
Hydraulic and liquid capacity	Hydraulic system	Load Sensitive System
	Pump type	Variable X1 Piston Pump
	Pressure P1, P2	32 MPa
	Flow rate P1, P2	176 L/min
	Hydraulic tank capacity	175 L
	Fuel tank capacity	150 L
	Engine fuel tank capacity	12 L

WHEEL EXCAVATOR



9400 KG Operation Weight



Strong & Durable



Fuel Saving

TWO CYLINDERS

- ◆ STRONGER
- ◆ MORE STABLE
- ◆ HIGHER EFFICIENCY

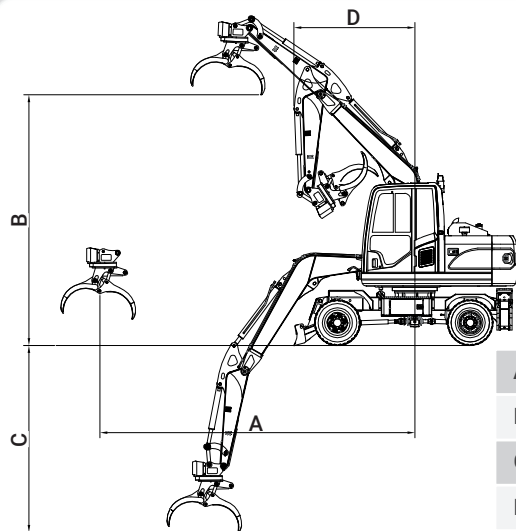
UPGRADED AIR FILTER

Equipped with upgraded high-end air filter, it can filter the dust and impurities in the air more effectively and prolong the life of the engine.

STRONG, DURABLE & FUEL EFFICIENT ENGINE

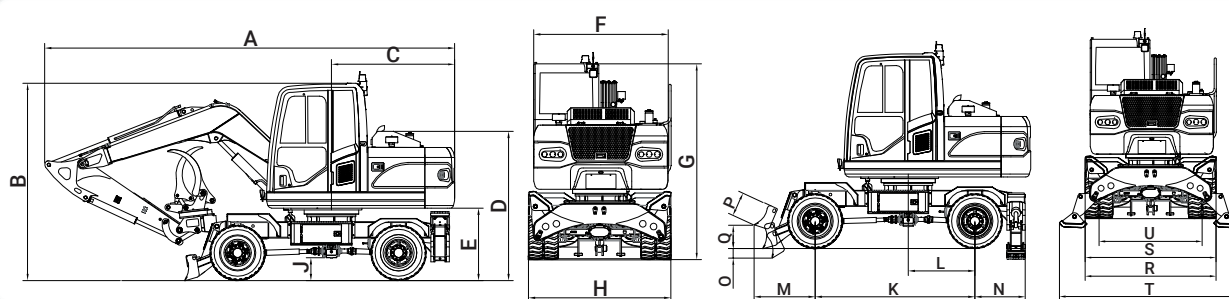
- ◆ The engine is equipped with the BOSCH common rail system, which is economical and fuel-efficient, with high matching with the whole vehicle, stable and reliable.
- ◆ Lower vibration, lower noise, and more comfortable driving experience.
- ◆ The maintenance period is increased to 500 hours, and the service life is more than 20000 hours.
- ◆ Remote monitoring and control can be achieve by using the technology of Artificial Intelligence of Things (AIoT).

OPERATING RANGE



A	Max. grab radius	6600 mm
B	Max. dumping height	5660 mm
C	Max. grab depth	3770 mm
D	Min turning radius	2395 mm

MAIN DIMENSION



A	Total length	6485 mm	L	Distance between swing center to rear axle	1000 mm
B	Total height	2932 mm	M	Front extension	920 mm
C	Counter weight turning radius	1836 mm	N	Back extension	754 mm
D	Hood height	2057 mm	O	Maximum reduction of the dozer blade	150 mm
E	Counter weight ground clearance	1100 mm	P	Height of dozer blade	360 mm
F	Upper structure width	2000 mm	Q	Maximum lift of dozer blade	300 mm
G	Cab height	2932 mm	R	Overall width of dozer blade	2138 mm
H	Total Tire width	2165 mm	S	Total width with outrigger back	2130 mm
J	Minimum ground clearance	338 mm	T	Total width with outrigger out	2965 mm
K	Wheel Tread	2400 mm	U	Wheel / Base	1700 mm

RELIABLE PLUNGER PUMP & MAIN VALVE



Large displacement load sensitive plunger pump and large diameter main valve are adopted, with fast action, coordinated compound action and high reliability. There is a boom holding valve inside the main valve to prevent the boom from falling.



SECURITY AND SAFETY DESIGN

- ◆ Add rear view camera rear lighting, makes reversing safer no matter day or night.
- ◆ Add the work warning light to warn the surrounding personnel at anytime. It is strictly prohibited to approach the work scope.
- ◆ Fixed base of license plate and license plate lamp are added to meet the national licensing requirements.
- ◆ Parallel radiator, full steel mesh back door, increase ventilation, improving the cooling efficiency, the back lights inside the counterweight completely, avoid the collision at the complex conditions working.



LUXURIOUS AND COMFORTABLE OPERATION SPACE, DESIGNED WITH ERGONOMIC CONCEPT

- ◆ All operation handles and switch buttons are ergonomically designed.
- ◆ The adjustable direction indicator can adjust the angle according to your own needs.
- ◆ Vertical air conditioner outlet, better cooling effect.



REASONABLE & RELIABLE STRUCTURE

After the optimization of simulation finite element analysis, the structure of boom and stick is more reasonable and reliable, and service life is longer.



ALUMINUM ALLOY GAS CYLINDER IS ADOPTED, & AIR FILTER, AUTOMATIC DRAIN VALVE & QUICK AIR CONNECTION ARE ADDED

- ◆ Aluminum alloy gas cylinder is used to avoid the rust in the gas cylinder.
- ◆ Added air filter to filter impurities in the air.
- ◆ Automatic drain valve, the moisture in the gas cylinder is discharged automatically, without artificial drainage.
- ◆ Quick air circuit connector is convenient for users to use pneumatic grease gun for oiling and tire inflation.



ROUTINE INSPECTION AND MAINTENANCE ARE MORE CONVENIENT

- ◆ The layout of all hydraulic components is reasonable, open the hood for maintenance.
- ◆ The engine, air conditioner, brake air circuit and other components are all placed behind the cab, open the side door for maintenance.

BE110W-9B

WHEEL EXCAVATOR

Specification

Operation weight		11000 Kg
Bucket capacity		0.4 M³
Engine	Model	WP4.1G125E302
	Displacement	4.088 L
	Rated power/speed	92 kW / 2200 rpm
	Maximum torque	480N.m/(1600-1800) r/min
Speed	Max. travel speed	32 km/h
	Swing speed	11 rpm
	Max. grade ability	30°
Hydraulic and liquid capacity	Pump type	Piston Pump
	Pressure P1, P2	30 MPa
	Flow rate P1, P2	231 L/min
	Hydraulic tank capacity	145 L
	Fuel tank capacity	175 L
	Engine fuel tank capacity	12 L



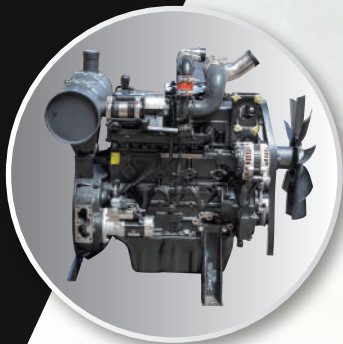
11000 KG Operation Weight



Strong & Durable



Fuel Saving



TWO CYLINDERS

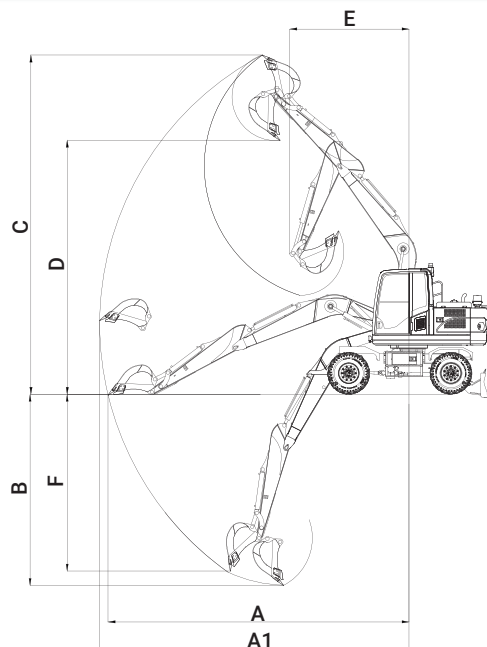
- ◆ STRONGER
- ◆ MORE STABLE
- ◆ HIGHER EFFICIENCY

STRONG, DURABLE & FUEL EFFICIENT ENGINE

According to the engine universal characteristic curve, the economy and power performance are calculated, and the maximum torque reserve is reserved to make the whole machine and the hydraulic system perfectly match.

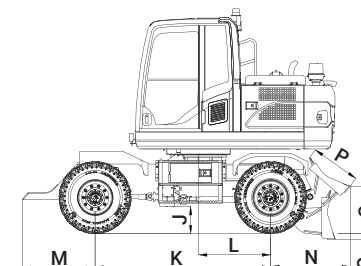
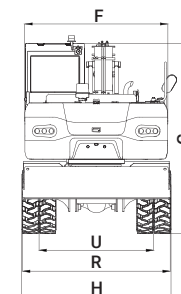
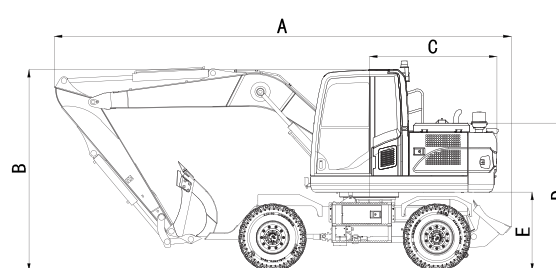


OPERATING RANGE



A1	Max. digging radius	7559 mm
A	Max. digging radius on ground	7354 mm
B	Max. digging depth	4673 mm
C	Max. digging height	8292 mm
D	Max. dumping height	6208 mm
E	Minimum turning radius	2913 mm
F	Max. vertical digging depth	4320 mm
	Bucket digging force	85 KN
	Bucket arm digging force	61 KN

MAIN DIMENSION



A	Total length	7137 mm
B	Total height	3071 mm
C	Counter weight turning radius	1941 mm
D	Hood height	2255 mm
E	Counter weight ground clearance	1206 mm
F	Upper structure width	2300 mm
G	Cab height	3072 mm
H	Total Tire width	2403 mm
J	Minimum ground clearance	388 mm

K	Wheel Tread	2500 mm
L	Distance between swing center to rear axle	1025 mm
M	Front extension	1032 mm
N	Back extension	1134 mm
O	Maximum reduction of the dozer blade	80 mm
P	Height of dozer blade	703 mm
Q	Maximum lift of dozer blade	676 mm
R	Overall width of dozer blade	2380 mm
U	Wheel / Base	1840 mm

ADVANCE OPTIMIZED WORKING DEVICE

- ◆ Upgrade to articulated balance cylinder, directly connected with the axle, which is more secure and reliable.
- ◆ Rotational plastic mailbox is adopted to ensure fuel cleanliness and provide strong fuel guarantee for the equipment.
- ◆ Develop and design a new type of seam tire to prevent hard objects from getting stuck, effectively protect the tire and make the tire safe, reliable and durable. The tire pattern designed according to the grip performance index has better grip, wider tread and large grounding area, making the whole vehicle more stable.
- ◆ The boom is supported by two cylinders, with stronger lifting force, more stable and higher working efficiency.



LUXURIOUS, COMFORTABLE, & ERGONOMIC SPACE

- ◆ All operation handles and switch buttons are ergonomically designed.
- ◆ The adjustable direction indicator can adjust the angle according to your own needs.
- ◆ Vertical air conditioner outlet, better cooling effect.



REASONABLE & RELIABLE STRUCTURE

After the optimization of simulation finite element analysis, the structure of boom and stick is more reasonable and reliable, and service life is longer.

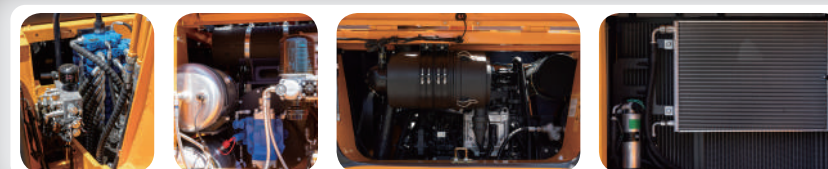
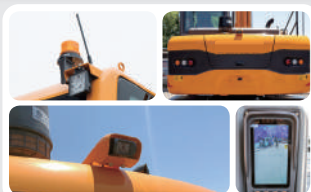


ALUMINUM ALLOY GAS CYLINDER IS ADOPTED, & AIR FILTER, AUTOMATIC DRAIN VALVE & QUICK AIR CONNECTION ARE ADDED

- ◆ Aluminum alloy gas cylinder is used to avoid the rust in the gas cylinder.
- ◆ Added air filter to filter impurities in the air.
- ◆ Automatic drain valve, the moisture in the gas cylinder is discharged automatically, without artificial drainage.
- ◆ Quick air circuit connector is convenient for users to use pneumatic grease gun for oiling and tire inflation.

SECURITY AND SAFETY DESIGN

- ◆ Add rear view camera rear lighting, makes reversing safer no matter day or night.
- ◆ Add the work warning light to warn the surrounding personnel at any time. It is strictly prohibited to approach the work scope.
- ◆ Fixed base of license plate and license plate lamp are added to meet the national licensing requirements.



ROUTINE INSPECTION AND MAINTENANCE OBJECTS ARE WITHIN REACH

- ◆ The layout of all hydraulic components is reasonable, open the hood for maintenance.
- ◆ The engine, air conditioner, brake air circuit and other components are all placed behind the cab, open the side door for maintenance.

BE111W-9C

WHEEL EXCAVATOR

Specification

Operation weight		11100 Kg
Bucket capacity		0.4 M³
Engine	Model	WP4.1G125E302
	Displacement	4.088 L
	Rated power/speed	92 kW / 2200 rpm
	Maximum torque	480N.m/(1600-1800) r/min
Speed	Max. travel speed	32 km/h
	Swing speed	11 rpm
	Max. grade ability	30°
Hydraulic and liquid capacity	Pump type	Piston Pump
	Pressure P1, P2	30 MPa
	Flow rate P1, P2	231 L/min
	Hydraulic tank capacity	145 L
	Fuel tank capacity	175 L
	Engine fuel tank capacity	12 L



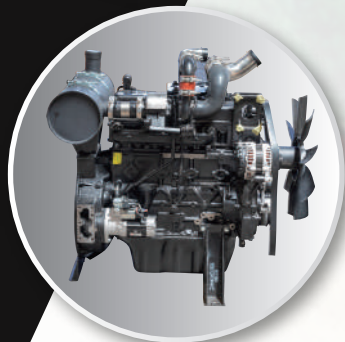
11100 KG Operation Weight



Strong & Durable



Fuel Saving



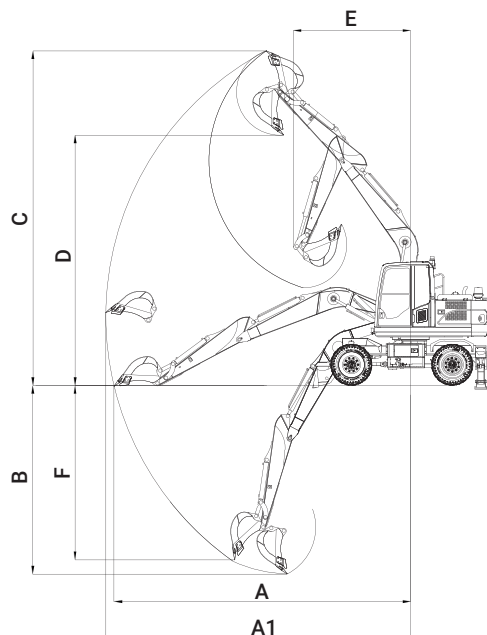
TWO CYLINDERS

- ◆ STRONGER
- ◆ MORE STABLE
- ◆ HIGHER EFFICIENCY

STRONG, DURABLE & FUEL EFFICIENT ENGINE

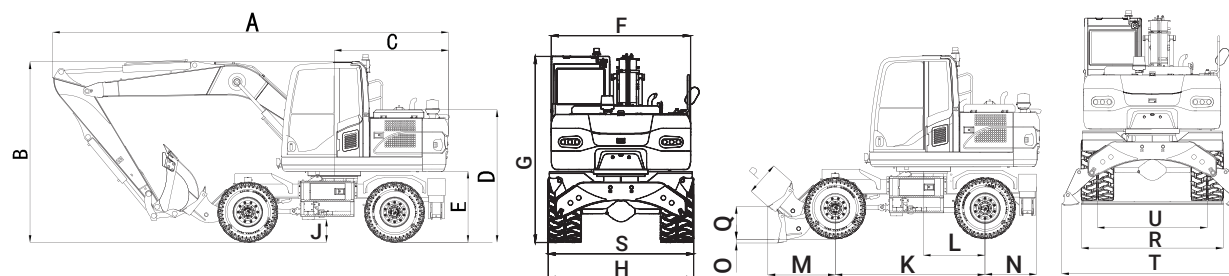
According to the engine universal characteristic curve, the economy and power performance are calculated, and the maximum torque reserve is reserved to make the whole machine and the hydraulic system perfectly match.

OPERATING RANGE



A1	Max. digging radius	7559 mm
A	Max. digging radius on ground	7354 mm
B	Max. digging depth	4673 mm
C	Max. digging height	8292 mm
D	Max. dumping height	6208 mm
E	Minimum turning radius	2913 mm
F	Max. vertical digging depth	4320 mm
	Bucket digging force	85 KN
	Bucket arm digging force	61 KN

MAIN DIMENSION



A	Total length	6730 mm	L	Distance between swing center to rear axle	1025 mm
B	Total height	3071 mm	M	Front extension	1121 mm
C	Counter weight turning radius	1941 mm	N	Back extension	862 mm
D	Hood height	2255 mm	O	Maximum reduction of the dozer blade	67mm
E	Counter weight ground clearance	1206 mm	P	Height of dozer blade	703 mm
F	Upper structure width	2300 mm	Q	Maximum lift of dozer blade	676 mm
G	Cab height	3072 mm	R	Overall width of dozer blade	2380 mm
H	Total Tire width	2403 mm	S	Total width with outrigger back	2402 mm
J	Minimum ground clearance	388 mm	T	Total width with outrigger out	3060 mm
K	Wheel Tread	2500 mm	U	Wheel Base	1840 mm

ADVANCE OPTIMIZED WORKING DEVICE

- ◆ Upgrade to articulated balance cylinder, directly connected with the axle, which is more secure and reliable.
- ◆ Rotational plastic mailbox is adopted to ensure fuel cleanliness and provide strong fuel guarantee for the equipment.
- ◆ Develop and design a new type of seam tire to prevent hard objects from getting stuck, effectively protect the tire and make the tire safe, reliable and durable. The tire pattern designed according to the grip performance index has better grip, wider tread and large grounding area, making the whole vehicle more stable.
- ◆ The boom is supported by two cylinders, with stronger lifting force, more stable and higher working efficiency.



LUXURIOUS, COMFORTABLE, & ERGONOMIC SPACE

- ◆ All operation handles and switch buttons are ergonomically designed.
- ◆ The adjustable direction indicator can adjust the angle according to your own needs.
- ◆ Vertical air conditioner outlet, better cooling effect.



REASONABLE & RELIABLE STRUCTURE

After the optimization of simulation finite element analysis, the structure of boom and stick is more reasonable and reliable, and service life is longer.



ALUMINUM ALLOY GAS CYLINDER IS ADOPTED, & AIR FILTER, AUTOMATIC DRAIN VALVE & QUICK AIR CONNECTION ARE ADDED

- ◆ Aluminum alloy gas cylinder is used to avoid the rust in the gas cylinder.
- ◆ Added air filter to filter impurities in the air.
- ◆ Automatic drain valve, the moisture in the gas cylinder is discharged automatically, without artificial drainage.
- ◆ Quick air circuit connector is convenient for users to use pneumatic grease gun for oiling and tire inflation.

SECURITY AND SAFETY DESIGN

- ◆ Add rear view camera rear lighting, makes reversing safer no matter day or night.
- ◆ Add the work warning light to warn the surrounding personnel at any time. It is strictly prohibited to approach the work scope.
- ◆ Fixed base of license plate and license plate lamp are added to meet the national licensing requirements.



ROUTINE INSPECTION AND MAINTENANCE OBJECTS ARE WITHIN REACH

- ◆ The layout of all hydraulic components is reasonable, open the hood for maintenance.
- ◆ The engine, air conditioner, brake air circuit and other components are all placed behind the cab, open the side door for maintenance.

BE111W-9B

Specification

Operation weight		11100 Kg
Bucket capacity		0.4 M³
Engine	Model	YC4DK100-T301
	Displacement	3.621 L
	Rated power/speed	73.5 kW / 2400 rpm
	Maximum torque	350N.m/(1800-2200) r/min
Speed	Max. travel speed	32 km/h
	Swing speed	10 rpm
	Max. grade ability	30°
Hydraulic and liquid capacity	Hydraulic system	Load sensitive system
	Pump type	Variable X1 Piston pump
	Pressure P1, P2	30 MPa
	Flow rate P1, P2	175 L/min
	Hydraulic tank capacity	170 L
	Fuel tank capacity	175 L
Engine fuel tank capacity		19 L

WHEEL EXCAVATOR



11100 KG Operation Weight



Strong & Durable



Fuel Saving



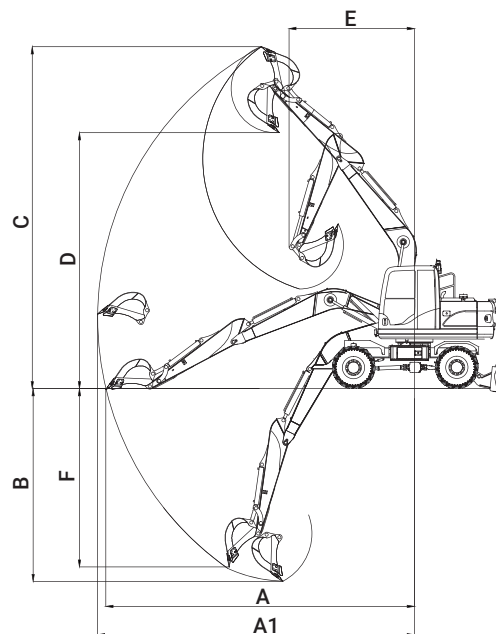
TWO CYLINDERS

- ◆ STRONGER
- ◆ MORE STABLE
- ◆ HIGHER EFFICIENCY

STRONG, DURABLE & FUEL EFFICIENT ENGINE

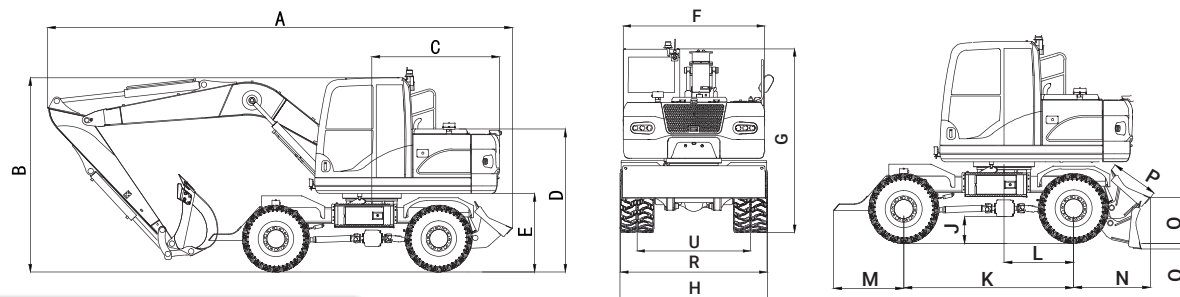
- ◆ The engine is equipped with the BOSCH common rail system, which is economical and fuel-efficient, with high matching with the whole vehicle, stable and reliable.
- ◆ Lower vibration, lower noise, and more comfortable driving experience.
- ◆ The maintenance period is increased to 500 hours, and the service life is more than 20000 hours.
- ◆ Remote monitoring and control can be achieve by using the technology of Artificial Intelligence of Things (AIoT).

OPERATING RANGE



A1	Max. digging radius	7683 mm
A	Max. digging radius on ground	7479 mm
B	Max. digging depth	4673 mm
C	Max. digging height	8292 mm
D	Max. dumping height	6208 mm
E	Minimum turning radius	3038 mm
F	Max. vertical digging depth	4320 mm
	Bucket digging force	85 KN
	Bucket arm digging force	61 KN

MAIN DIMENSION



A	Total length	7137 mm	K	Wheel Tread	2500 mm
B	Total height	2984 mm	L	Distance between swing center to rear axle	1025 mm
C	Counter weight turning radius	1960 mm	M	Front extension	1032 mm
D	Hood height	2195 mm	N	Back extension	1134 mm
E	Counter weight ground clearance	1205 mm	O	Maximum reduction of the dozer blade	80 mm
F	Upper structure width	2300 mm	P	Height of dozer blade	703 mm
G	Cab height	2983 mm	Q	Maximum lift of dozer blade	676 mm
H	Total Tire width	2403 mm	R	Overall width of dozer blade	2380 mm
J	Minimum ground clearance	394 mm	U	Wheel / Base	1840 mm

ADVANCE OPTIMIZED WORKING DEVICE

- ◆ Upgrade to articulated balance cylinder, directly connected with the axle, which is more secure and reliable.
- ◆ Rotational plastic mailbox is adopted to ensure fuel cleanliness and provide strong fuel guarantee for the equipment.
- ◆ Develop and design a new type of seam tire to prevent hard objects from getting stuck, effectively protect the tire and make the tire safe, reliable and durable. The tire pattern designed according to the grip performance index has better grip, wider tread and large grounding area, making the whole vehicle more stable.
- ◆ The boom is supported by two cylinders, with stronger lifting force, more stable and higher working efficiency.



LUXURIOUS, COMFORTABLE, & ERGONOMIC SPACE

- ◆ All operation handles and switch buttons are ergonomically designed.
- ◆ The adjustable direction indicator can adjust the angle according to your own needs.
- ◆ Vertical air conditioner outlet, better cooling effect.



REASONABLE & RELIABLE STRUCTURE

After the optimization of simulation finite element analysis, the structure of boom and stick is more reasonable and reliable, and service life is longer.



ALUMINUM ALLOY GAS CYLINDER IS ADOPTED, & AIR FILTER, AUTOMATIC DRAIN VALVE & QUICK AIR CONNECTION ARE ADDED

- ◆ Aluminum alloy gas cylinder is used to avoid the rust in the gas cylinder.
- ◆ Added air filter to filter impurities in the air.
- ◆ Automatic drain valve, the moisture in the gas cylinder is discharged automatically, without artificial drainage.
- ◆ Quick air circuit connector is convenient for users to use pneumatic grease gun for oiling and tire inflation.

SECURITY AND SAFETY DESIGN

- ◆ Add rear view camera rear lighting, makes reversing safer no matter day or night.
- ◆ Add the work warning light to warn the surrounding personnel at anytime. It is strictly prohibited to approach the work scope.
- ◆ Fixed base of license plate and license plate lamp are added to meet the national licensing requirements.
- ◆ Parallel radiator, full steel mesh back door, increase ventilation, improving the cooling efficiency, the back lights inside the counterweight completely, avoid the collision at the complex conditions working.

ROUTINE INSPECTION AND MAINTENANCE OBJECTS ARE WITHIN REACH

- ◆ The layout of all hydraulic components is reasonable, open the hood for maintenance.
- ◆ The engine, air conditioner, brake air circuit and other components are all placed behind the cab, open the side door for maintenance.

BE116W-9C

WHEEL EXCAVATOR

Specification

Operation weight		11600 Kg
Bucket capacity		0.4 M³
Engine	Model	YC4DK100-T301
	Displacement	3.621 L
	Rated power/speed	73.5 kW / 2400 rpm
	Maximum torque	350N.m/(1800-2200) r/min
Speed	Max. travel speed	32 km/h
	Swing speed	10 rpm
	Max. grade ability	30°
Hydraulic and liquid capacity	Hydraulic system	Load sensitive system
	Pump type	Variable X1 Piston pump
	Pressure P1, P2	30 MPa
	Flow rate P1, P2	175 L/min
	Hydraulic tank capacity	170 L
	Fuel tank capacity	175 L
	Engine fuel tank capacity	19 L



11600 KG Operation Weight



Strong & Durable



Fuel Saving



TWO CYLINDERS

- ◆ STRONGER
- ◆ MORE STABLE
- ◆ HIGHER EFFICIENCY

STRONG, DURABLE & FUEL EFFICIENT ENGINE

- ◆ The engine is equipped with the BOSCH common rail system, which is economical and fuel-efficient, with high matching with the whole vehicle, stable and reliable.
- ◆ Lower vibration, lower noise, and more comfortable driving experience.
- ◆ The maintenance period is increased to 500 hours, and the service life is more than 20000 hours.
- ◆ Remote monitoring and control can be achieved by using the technology of Artificial Intelligence of Things (AIoT).



BOMAC
エクストラ ワークス エクストラ ストロング