

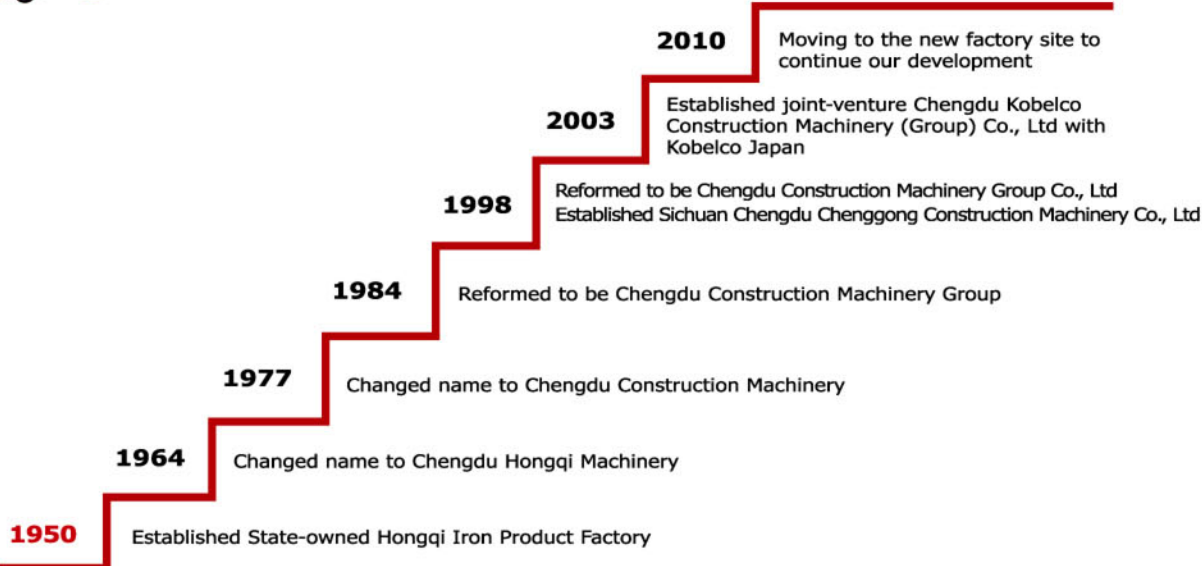
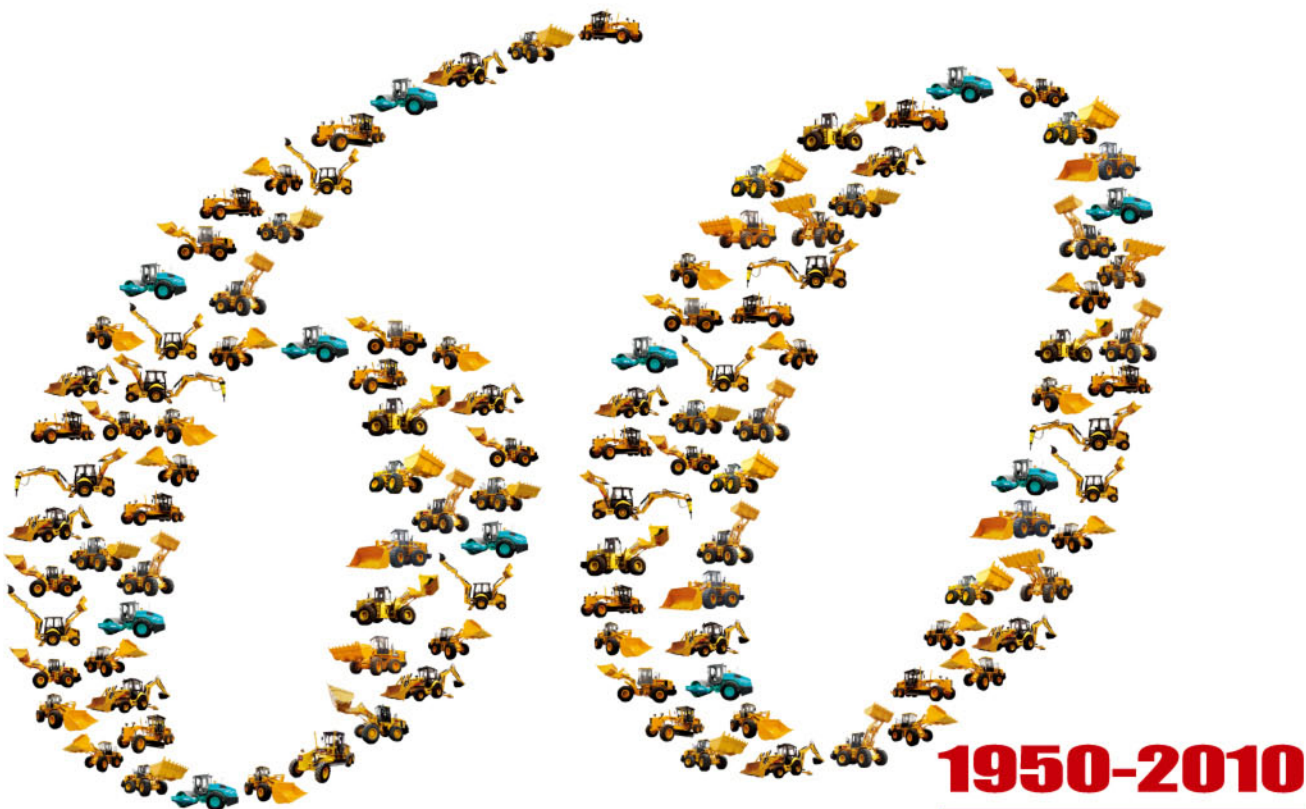


SICHUAN CHENGDU CHENGGONG CONSTRUCTION MACHINERY CO., LTD

SICHUAN CHENGDU CHENGGONG CONSTRUCTION MACHINERY CO., LTD

SICHUAN CHENGDU CHENGGONG CONSTRUCTION MACHINERY CO., LTD

1966
1978 1998 2010
1950



Chenggong's sixty years history began as the State-owned Hongqi Iron Product factory. And now Chenggong has grown to be a large construction machinery manufacturer with an output values of several billions RMB. From the very beginning till now, Chenggong insists on high quality and creating value for customers. All our effort builds the core of Chenggong brand. Sixty years of hard journey, Chenggong is hand-in-hand with our partners, suppliers and distributors. We are accumulating more experience and introducing most advanced technology to produce more powerful machines for customers all over the world.

Chenggong, in Chinese is homophony with success. We are marching forward on the road of success to the next brilliant sixty years with persistence and passion.



*Contributing
to your Growth!*

CG-specializing in wheel earth moving equipment

Chenggong delivers customer value with strength in technology and efficiency.

Chenggong realizes customer success by supplying competitive products and service.

CG Gets Its Birthday of 60 Years in 2010

Growing up with China, developing together with Chinese construction machinery industry, CG gets larger and stronger. After experiencing establishment, sit-moving, reforming, innovation, today's CG has evolved into Chengdu Kobelco Construction Machinery (Group) Company which is the biggest base of construction machinery R&D, manufacture in Southwest China, and has become one of the most important links of Chinese construction machinery industry chains.

CG brand, which has been developed for 60 years, has got many reputations, such as: CG™ is awarded as China Famous Brand. CG™ wheel loader is awarded as China Famous Product and China Construction Machinery 10 Predominant Brands. Now CG is reaching 45th on the ranking of global "Construction's Equipment Top50", announced by International Construction Magazine.

In 2010, Chengdu Kobelco group has invested RMB3.4 billion to construct a new manufacturing site which be finished by the end of this year. After moving to the new site, CG will double its productivity, and could produce 20000 units wheel loader annually. Crane business is also booming and promising.



Progressiveness & Creativity



Innovation is soul of progress and power of company development.

In 1964, the first trial production of Z1-4 dump front loader in China succeeded in Chenggong.

In 1978, the first trial production of ZL20 and ZL30 wheel loaders in China were succeeded in Chenggong.

In 1982, Chenggong cooperated with Caterpillar and introduced technology of hydraulic converter.

In 1997, Chenggong introduced advanced technology from Spain and developed YZ14 road roller.

In 2001, a new product PY165 motor grader launched.

In 2007, CG new products which carry Chenggong independent intellectual property rights are 70% of total sales.

In 2008, CG wheel loader ZL30B-II, CG938H, CG932E, CG935H, CG942H, ZL50E-II, CG956G, CG958G, CG956H, CG957H, CG958H and motor grader MG1320B passed Russia GOST R certification, among which CG938H, CG958H and MG1320H have passed EU Safety Certification (CE) by Group TÜV Rheinland Berlin Brandenburg.

In 2009, Chenggong successfully launched backhoe loaders in Beijing International Construction Machinery Exhibition & Seminar. As a new member in CG product line, backhoe loader is produced with CG rich construction machinery experience and CG innovation essence.

In 2010, Chenggong successfully updates TEAM 3 technology (Power flow management technology), meanwhile new machine models like CG948H, CG946G and ZL50-3super are developed which enlarge the products line.

Technology & Efficiency

Leading by "technology & efficiency", CG achieved many good results in 2010. CG990H gained which symbolizing advanced technology and manufacturing capacity joined products catalogue whereas the TEAM 3 core technology was developed and popularized, which was already approved by the market and CG powertrain technology was recognized. The performance of the equipments was enhanced while the product line of wheel loader, backhoe loader and motor grader was enriched. Advanced technology is only one side we emphasis, CG keeps improving its manufacturing to constantly perfecting quality. New factory which adopts the most advanced facility will accelerating the quality improvement while it adds to the produce capacity.





Customer & Service

Chenggong keeps good communication with customers at all time. Providing standardized, professional, prompt, and excellent star-grade service to customers is the service tenet of Chenggong.

For overseas market, Chenggong set up a parts center in Czech to better server customers in surrounding areas, more parts available and more prompt response. We also send a service team to Africa, providing on-site technical support to both distributors and end-users, get feedback from customers and monitor the working condition of our products.

In 2008, we invited distributors all over the world to participate our Annual Distributor Conference. We also organized a technical training for technicians.

In 2009, the on-line service system EMIS is launched. A more convenient channel is offered for machine information, parts purchase, regular maintenance, and technical communication.

In September 2009, we invited customers and distributors to participate in our New Product Trial, Which is an innovation in product development. Engineers and service men directly contacted the customer to better meet their various needs.

In 2010, Chenggong send resident engineers to Algeria, serving not only CG agents but also the users and collecting demands info to promote the concept of Chenggong brand service to our customers.

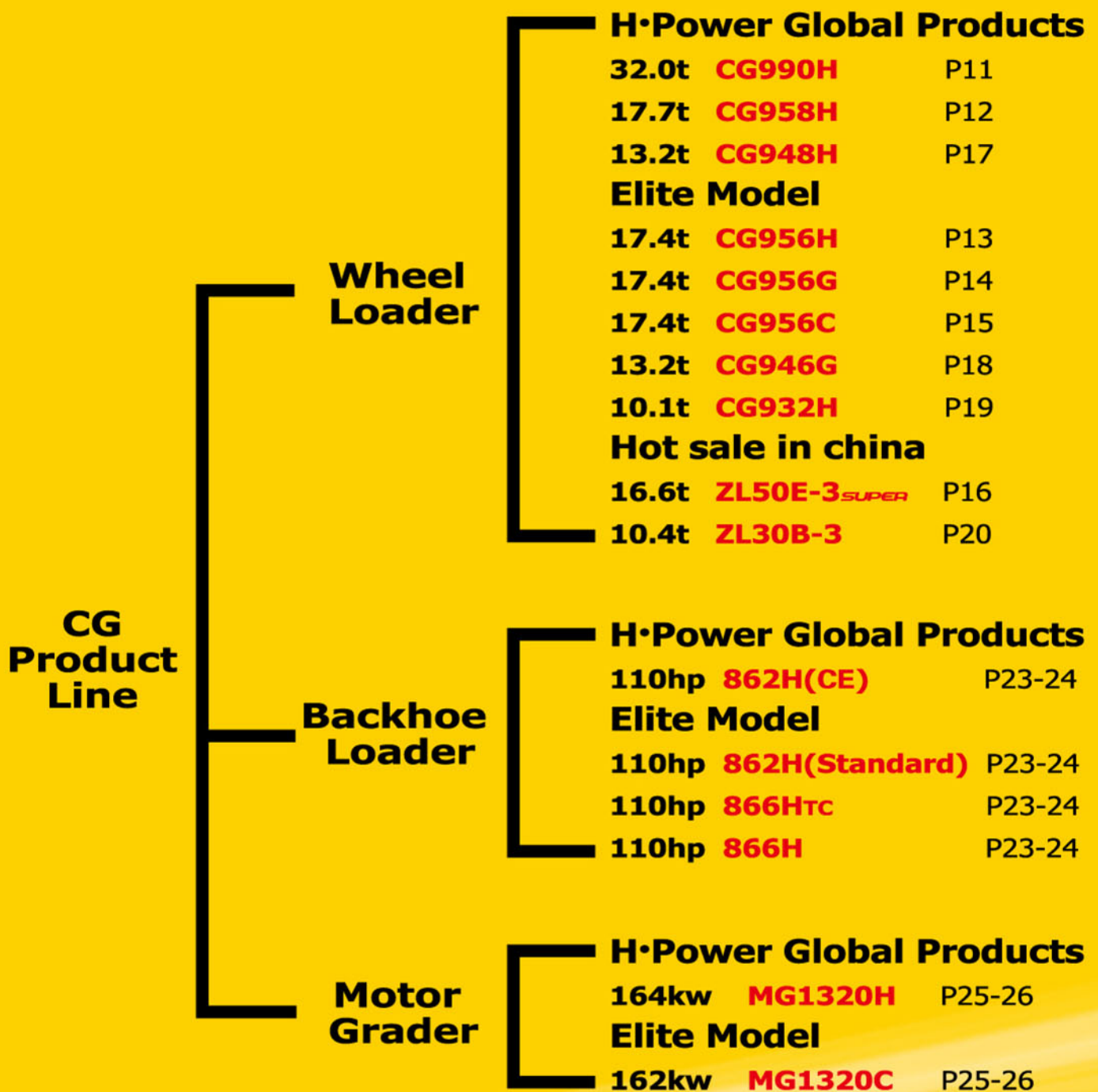




Sales Network

Our customers locate all over the world and our global network of distributors is ready to serve. CG's overseas market covers more than 30 countries and regions as Libya, Egypt, Algeria, Argentina, Peru, Iran, Tunisia, Ukraine, Russia, United Arab Emirates, Netherlands, Germany, Poland Turkey, Canada, Australia, USA, etc.

We established a parts center in Europe to better serve the surrounding areas and a service team is standing by to provide service and guidance on site.





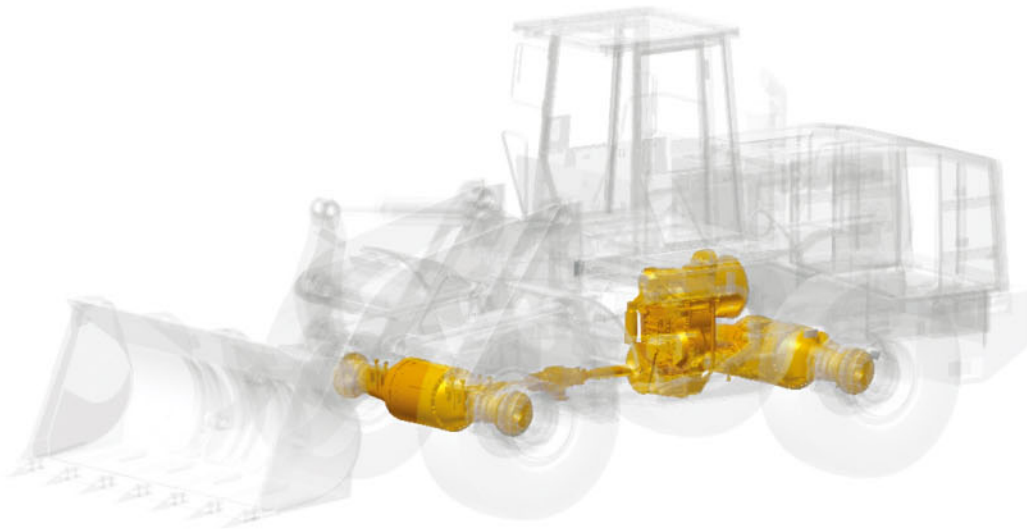
**Energy
Conservation**

**Efficiency
Improvement**



Energy Conservation & Efficiency Improvement

CG has gained abundant experience of construction machinery research and production for 60 years and finally develops CG "TEAM" technology, which integrates transmission, engine and attachment to improve the working efficiency greatly and to reduce energy consumption observably. It's our proud technology, which indicates the trend of environmental protection technology in the whole construction machinery industry.



CG powerful transmission system An optimized solution

The strength of power & the duration of power

Based on TEAM technology totally developed by CG itself, CG optimizes electric-hydraulic transmission and wet axle.
Higher efficiency, more reliable & less fuel consumption.

Power with Intelligence

Torque converter: introduce advanced technology from Caterpillar and adopt Chenggong innovation to improve the adaptability. The efficiency of the convertor achieves 85%-90%. Larger high-efficiency range guarantees the full use of engine power leading high efficiency.

Electronic-controlled power shift transmission: highly intellectualized, compact structure, shorter power transmit distance. Electronic control provides precise and comfortable operation. Power shift is stable which leads to high efficiency of the machine while less work by operator.

KD key: when load is high, the operator only needs to press KD key to shift from second gear to first gear, which raise the efficiency and shorten the working time.



Patents of technology on power shift transmission



Power with Dynamic

CG wet axle has been tested for more than ten years in real working circumstances. The continuous improvement generates mature technology. Its good adaptability, high antiinterference ability, good tightness and no spark on breaking make the machine especially appropriate for tough environment.

The wet brake with enclosed friction disk makes stable braking and long duration. The limited slip differential and a new driving axle radiation system are options. All these innovations won many patents of new technology.



Patents of technology on wet brake with enclosed friction disk



Patents of technology on radiation system for driving axle



Patents of technology on limited slip differential



Patents of technology on limited slip differential

Wheel Loader CG990H

- ▶ Passed EU Safety Certification (CE) by Group TÜV Rheinland Berlin Brandenburg
- ▶ Cummins QSM11 engine -- Stage III / EPA Tier III brings great power with low fuel-consumption
- ▶ Original ZF 4WG 310 transmission shows easier operation & better efficiency
- ▶ World-leading pilot control, emergency steering & electronic rear view
- ▶ Spacious ROPS/FOPS cabin with operation box integrated on the seat
- ▶ Automatically back-ward open engine-cover for easy maintenance
- ▶ Integrated installment boxes, centered grease nipples and openable heat radiator
- ▶ Automatic electronic monitor system and alarm



Main Specifications		CG990H
Engine Model		Cummins QSM11
Rated Power/Rated Revolution	(kW/rpm)	250/2100
	(hp/rpm)	335.2/2100
Rated Load Weight (kg/lb)		9000/19841.6
Max. Dump Clearance (45° Discharge) (mm/ft'in")		3313/10'9"
Dump Reach (Max. Dump Clearance) (mm/ft'in")		1373/4'6"
Max. Forward Speed (km/h/mph)		32/19.9
Min. Turning Radius (mm/ft'in")		6882/22'6"
Action Time of Working Device (s)		12
Lifting Time of Working Device (s)		7.1
Bucket Capacity (m³/yd³)		4.5-6.8/5.9-8.9
Breakout Force (kN/kip)		260/58.5
Overall Size (L*W*H) (mm/ft'in")		9459X3579X3821 31'x11'7"x12'5"
Operating Mass (kg/lb)		31500-32000/69445.6-70547.9
Wheelbase (mm/ft'in")		3600/11'8"





H·POWER
Outstanding Power
CG Global Products

Wheel Loader CG958H

- ▶ Passed EU Safety Certification (CE) by Group TÜV Rheinland Berlin Brandenburg
- ▶ Cummins QSB6.7 engine meeting European Emission Stage III/EPA Tier III standard
- ▶ Electro-hydraulic ZF transmission with four forward speeds & three reverse and integrated wet drive axles
- ▶ Hydraulic motor driven independent cooling system and electronic backward-opened engine cover
- ▶ Luxurious ROPS/FOPS cabin is heat-insulated, shock-absorbing, noise-reducing, ultraviolet-radiation-proof, defrosting and has larger window providing better and comfortable driving experience



Main Specifications		CG958H
Engine Model		Cummins QSB6.7
Rated Power/Rated Revolution	(kW/rpm)	164/2200
	(hp/rpm)	223/2200
Rated Load Weight (kg/lb)		5000/11023.1
Max. Dump Clearance (45° Discharge) (mm/ft'in")		3196/10'5"
Dump Reach (Max. Dump Clearance) (mm/ft'in")		1039/3'4"
Max. Forward Speed (km/h/mph)		36/22.4
Min. Turning Radius (mm/ft'in")		6400/20'10"
Action Time of Working Device (s)		11.8
Lifting Time of Working Device (s)		6.5
Bucket Capacity (m³/yd³)		2.5-3.6/3.3-4.7
Breakout Force (kN/kip)		180/40.5
Overall Size (L*W*H) (mm/ft'in")		8180x3000x3540 26'8"x9'8"x11'6"
Operating Mass (kg/lb)		17700/39021.8
Wheelbase (mm/ft'in")		3360/11'



Wheel Loader CG956H

- CG electric-hydraulic transmission with four forward speed & three reverse
- The efficiency of optimized working hydraulic system with shorter circle time (10.0s) is higher. Joy stick makes operating more stable, precise, convenient
- Cabin is equipped with streamline dash panel and steering mechanism. A/C and fuel gauge are standard
- Electronic-controlled Integrated backward-opened engine cover provides easy maintenance for whole engine system
- Bucket with reinforced wear-resisting blade which 3 times higher wearability than before. Side teeth are equipped for longer use
- A diagnostic hole is set on the cab floor for easier maintenance of pumps and valves



Main Specifications

CG956H

Engine Model		Shanghai SC11CB220G2B1
Rated Power/Rated Revolution	(kW/rpm)	162/2200
	(hp/rpm)	217.2/2200
Rated Load Weight (kg/lb)		5000/11023.1
Max. Dump Clearance (45° Discharge) (mm/ft'in")		3146/10'3"
Dump Reach (Max. Dump Clearance) (mm/ft'in")		1075/3'5"
Max. Forward Speed (km/h/mph)		36/22.4
Min. Turning Radius (mm/ft'in")		6900/22'8"
Action Time of Working Device (s)		10.0
Lifting Time of Working Device (s)		6.0
Bucket Capacity (m³/yd³)		2.5-3.6/3.3-4.7
Breakout Force (kN/kip)		170/38.25
Overall Size (L*W*H) (mm/ft'in")		8020x3000x3480 26'3"x9'8"x11'4"
Operating Mass (kg/lb)		17400/36596.7
Wheelbase (mm/ft'in")		3280/10'8"



Wheel Loader CG956G

- ▶ CG electric-hydraulic transmission with four forward speeds & three reverse
- ▶ Working cycle time shortened to 10.0s; Working hydraulic system applies pilot control
- ▶ Full hydraulic steering system
- ▶ Newly-designed dash panel & operation box equipped on seat
A/C & fuel gauge
- ▶ Electronic-control backward-open engine cover for easy maintenance
Strengthened bucket with wear-resisting plate and teeth
- ▶ A diagnostic port is set on the cab floor for easier maintenance of pumps and valves



Main Specifications		CG956G
Engine Model		Shangchai SC11CB220G2B1
Rated Power/Rated Revolution	(kW/rpm)	162/2200
	(hp/rpm)	217.2/2200
Rated Load Weight (kg/lb)		5000/11023.1
Max. Dump Clearance (45° Discharge) (mm/ft'in")		3196/10'5"
Dump Reach (Max. Dump Clearance) (mm/ft'in")		1033/3'4"
Max. Forward Speed (km/h/mph)		36/22.4
Min. Turning Radius (mm/ft'in")		6900/22'8"
Action Time of Working Device (s)		10.0
Lifting Time of Working Device (s)		6.0
Bucket Capacity (m³/yd³)		2.5-3.6/3.3-4.7
Breakout Force (kN/kip)		170/38.25
Overall Size (L*W*H) (mm/ft'in")		8020x3000x3480 26'3"x9'8"x11'4"
Operating Mass (kg/lb)		17400/36596.7
Wheelbase (mm/ft'in")		3280/10'8"

Wheel Loader CG956C

- Long wheelbase provides strong stability
- Pilot control
- Full hydraulic flow amplification system for less steering round and easy operation
- Newly-designed dash panel & operation box equipped on seat
- A/C & fuel gauge
- Electronic-control backward-open engine cover for easy maintenance
- Strengthened bucket with wear-resisting plate and teeth
- Installment boxes at both sides holding steering and brake components
- Optimized radiation system
- 290L fuel tank
- A diagnostic port is set on the cab floor for easier maintenance of pumps and valves



Main Specifications		CG956C
Engine Model		Shanghai SC11CB210.1G2B1
Rated Power/Rated Revolution	(kW/rpm)	162/2000
	(hp/rpm)	217.2/2000
Rated Load Weight (kg/lb)		5000/11023.1
Max. Dump Clearance (45° Discharge) (mm/ft'in")		3146/10'3"
Dump Reach (Max. Dump Clearance) (mm/ft'in")		1075/3'5"
Max. Forward Speed (km/h/mph)		36/22.4
Min. Turning Radius (mm/ft'in")		6900/22'8"
Action Time of Working Device (s)		10.7
Lifting Time of Working Device (s)		6.0
Bucket Capacity (m ³ /yd ³)		2.5-3.6/3.3-4.7
Breakout Force (kN/kip)		170/38.25
Overall Size (L*W*H) (mm/ft'in")		8020x3000x3480 26'3"x9'8"x11'4"
Operating Mass (kg/lb)		17400/36596.7
Wheelbase (mm/ft'in")		3280/10'8"





Wheel Loader ZL50E-3^{SUPER}

- Optimized radiator system with larger radiating area and better performance
- The operation of the flow amplification system is easy and flexible
- The working cycle time is shortened to 10.7s, which brings higher efficiency
- Reinforced implements and optimized linkage provide higher dump height and longer dump reach for larger working range
- New-type spacious cabin is comfortable and convenient which meets the ergonomics principle
- Integrated backward-open engine cover is easy for maintenance due to its large space

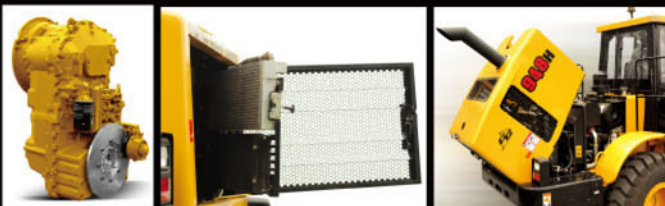


Main Specifications		ZL50E-3 ^{SUPER}
Engine Model		Weichai WD10G220E23
Rated Power/Rated Revolution	(kW/rpm)	162/2000
	(hp/rpm)	217.2/2000
Rated Load Weight (kg/lb)		5000/11023.1
Max. Dump Clearance (45° Discharge) (mm/ft'in")		3182/10'4"
Dump Reach (Max. Dump Clearance) (mm/ft'in")		1075/3'5"
Max. Forward Speed (km/h/mph)		36/22.4
Min. Turning Radius (mm/ft'in")		6570/20'12"
Action Time of Working Device (s)		10.7
Lifting Time of Working Device (s)		6.0
Bucket Capacity (m³/yd³)		2.5-3.6/3.3-4.7
Breakout Force (kN/kip)		180/40.5
Overall Size (L*W*H) (mm/ft'in")		8100x3000x3470 26'28"x9'8"x11'4"
Operating Mass (kg/lb)		16600/36596.7
Wheelbase (mm/ft'in")		3280/10'8"



Wheel Loader CG948H

- ▶ Passed EU Safety Certification (CE) by Group TÜV Rheinland Berlin Brandenburg
- ▶ Cummins QSB6.7 engine meeting European Emission Stage III/EPA Tier III standard
- ▶ Full hydraulic power steering system with flow load-sensing, single joystick controlling dual-pump flow-converging working hydraulic system, together with boom lifting limitation & bucket auto-balancing function
- ▶ Electro-hydraulic ZF 158 transmission with four forward speeds & three reverse and integrated wet drive axles
- ▶ Spacious ROPS/FOPS cabin with operation box integrated on the seat



Main Specifications		CG948H
Engine Model		Cummins QSB6.7
Rated Power/Rated Revolution	(kW/rpm)	119/2200
	(hp/rpm)	159.6/2200
Rated Load Weight (kg/lb)		4000/8818
Max. Dump Clearance (45° Discharge) (mm/ft'in")		2895/9'5"
Dump Reach (Max. Dump Clearance) (mm/ft'in")		960/3'1"
Max. Forward Speed (km/h/mph)		37/23
Min. Turning Radius (mm/ft'in")		5200/17'1"
Action Time of Working Device (s)		9.8
Lifting Time of Working Device (s)		4.8
Bucket Capacity (m³/yd³)		2.3/3.0
Breakout Force (kN/kip)		120/27
Overall Size (L*W*H) (mm/ft'in")		7400x2800x3485 24'2"x9'2"x11'4"
Operating Mass (kg/lb)		13200/2910.6
Wheelbase (mm/ft'in")		2900/9'5"



Wheel Loader CG946G

- ▶ The working cycle time is shortened to 9.5s which brings higher efficiency
- ▶ The working capacity of implements is high for its good performance, strong breakout force and large dump reach
- ▶ Wet axle with good reliability can adapt to various working environments
- ▶ New-type comfortable cabin is equipped with single joystick and A/C as standard devices
- ▶ Integrated backward-open engine cover is easy for maintenance for its large space



Main Specifications		CG946G
Engine Model		Xichai CA6113ZG
Rated Power/Rated Revolution	(kW/rpm)	128/2200
	(hp/rpm)	171.6/2200
Rated Load Weight (kg/lb)		4000/8818.5
Max. Dump Clearance (45° Discharge) (mm/ft'in")		2895/9'5"
Dump Reach (Max. Dump Clearance) (mm/ft'in")		960/3'1"
Max. Forward Speed (km/h/mph)		36/22.4
Min. Turning Radius (mm/ft'in")		5500/18'
Action Time of Working Device (s)		9.5
Lifting Time of Working Device (s)		5.5
Bucket Capacity (m³/yd³)		2.3/3
Breakout Force (kN/kip)		133/30
Overall Size (L*W*H) (mm/ft'in")		7470x2800x3340 24'5"x9'2"x11'
Operating Mass (kg/lb)		13200/29101
Wheelbase (mm/ft'in")		2900/9'6"

Wheel Loader CG932H

- Wet axle and more than 60 new designs on systems about hydraulic, electrical, pipes, etc.
- Turbocharged engine & optimized radiator system
- Special technology on hydraulic steering with less steering round and shorter working time
- Strengthened bucket with wear-resisting plate
- Driver-friendly specious cabin with A/C as optional choice
- Backward-open engine cover
- Optimized brake system with reliability & strong brake effect



Main Specifications		CG932H
Engine Model		Xichai CA6DF1D (Dongkang 6BT5.9/Weichai TD226B)
Rated Power/Rated Revolution	(kW/rpm)	92/2000
	(hp/rpm)	123.4/2000
Rated Load Weight (kg/lb)		3000/6613.9
Max. Dump Clearance (45° Discharge) (mm/ft'in")		2965/9'7"
Dump Reach (Max. Dump Clearance) (mm/ft'in")		957/3'14"
Max. Forward Speed (km/h/mph)		33/20.5
Min. Turning Radius (mm/ft'in")		5504/18'
Action Time of Working Device (s)		9.8
Lifting Time of Working Device (s)		5.5
Bucket Capacity (m³/yd³)		1.7-2.5/2.2-3.3
Breakout Force (kN/kip)		106/23.85
Overall Size (L*W*H) (mm/ft'in")		7055x2519x3186 23'1"x8'3"x10'5"
Operating Mass (kg/lb)		10126/21825.8
Wheelbase (mm/ft'in")		2760/9'





Wheel Loader ZL30B-3

- ▶ Direct connection between engine and transmission, avoiding connection adjustment, without any rubber disk
- ▶ Outstanding radiation capability
- ▶ High-pressure hydraulic system, shorter working cycle time (only 9.8s)
- ▶ Reinforced front axle. The drive axle adopts face tooth connection which is stable and reliable
- ▶ New-type spacious cabin with much patented technology inside and 34% broader view
- ▶ The engine hood can be opened from two sides for easy maintenance
- ▶ New-type fuel tank with lockable cap and 180L capacity can increase the working time



Main Specifications		ZL30B-3
Engine Model		Xichai CA6110/125G5-18AG2 (Weichai WP6G115E20)
Rated Power/Rated Revolution	(kW/rpm)	86/2000
	(hp/rpm)	117/2000
Rated Load Weight (kg/lb)		3000/6613.9
Max. Dump Clearance (45° Discharge) (mm/ft'in")		2964/9'7"
Dump Reach (Max. Dump Clearance) (mm/ft'in")		1022/3'4"
Max. Forward Speed (km/h/mph)		33/20.5
Min. Turning Radius (mm/ft'in")		5215/17'1"
Action Time of Working Device (s)		9.8
Lifting Time of Working Device (s)		5.9
Bucket Capacity (m³/yd³)		1.7/2.2
Breakout Force (kN/kip)		102/123.76
Overall Size (L*W*H) (mm/ft'in")		6793x2519x3150 22'3"x8'3"x10'3"
Operating Mass (kg/lb)		10400/22048
Wheelbase (mm/ft'in")		2573/8'4"

Options for Loaders

Fork



Wood Fork



Container Fork

Bucket

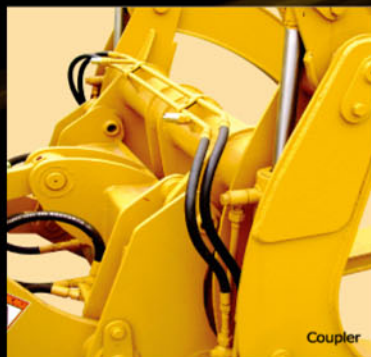


Stone Bucket



Enlarged Bucket with Teeth

Other Options



Coupler



Lifting Support



Extension Arm

List

	Standard Arm						Coupler				Extension Arm
	Steel Tube Fork	Wood Fork	Enlarged Bucket without Teeth	Enlarged Bucket with Teeth	Stone Bucket	Side-unload Bucket	Standard Bucket	Snow Plate	Lifting Support	Coupler	
CG990H	/	/	/	✓	✓	/	/	/	/	/	/
CG958H	✓	✓	✓	✓	✓	✓	✓	/	✓	✓	/
CG956H	/	/	/	/	/	/	/	/	/	/	/
CG956C	✓	✓	✓	/	/	/	✓	/	✓	✓	/
ZL50E-3 SUPER	✓	✓	✓	✓	✓	✓	✓	/	✓	✓	/
CG948H	/	/	✓	/	/	/	✓	/	✓	✓	✓
CG946G	/	/	✓	/	/	/	✓	/	✓	✓	/
CG932H	/	/	✓	/	/	/	✓	/	✓	✓	/
ZL30B-3	/	/	/	✓	/	/	✓	/	✓	✓	/

Main Specification

		Unit	CG990H	CG958H	CG956H	CG956C	ZL50E-3 SUPER	CG948H	CG946G	CG932H	ZL30B-3
Bucket	Enlarged Bucket Capacity	(m ³)	6.2/6.8	3.6	/	3.6	3.6	/	/	2.5	2.5
		yd ³	8.1/8.9	4.7	/	4.7	4.7	/	/	3.3	3.3
	Stone Bucket Capacity	(m ³)	4.5	2.5	/	/	2.5	/	/	/	/
		yd ³	5.9	3.3	/	/	3.3	/	/	/	/
Fork	Wood Fork Diameter (Coupler)	mm	/	830	/	830	830	732	/	732	732
		ft'in"	/	2'7"	/	2'7"	2'7"	2'4"	/	2'4"	2'4"
	Wood Fork Diameter (Fixed)	mm	/	830	/	830	830	732	/	/	/
		ft'in"	/	2'7"	/	2'7"	2'7"	2'4"	/	/	/
	Steel Tube Fork Diameter (Coupler)	mm	/	615	/	615	615	540	/	540	540
		ft'in"	/	2'	/	2'	2'	1'8"	/	1'8"	1'8"
	Steel Tube Fork Diameter (Fixed)	mm	/	615	/	615	615	540	/	/	/
		ft'in"	/	2'	/	2'	2'	1'8"	/	/	/

Extension arm: the extension arm provides higher dump clearance and longer dump reach.

Lifting support: reliable and durable lifting support can be used for lifting things, short distance transport and installing pipelines etc.

Coupler: coupler can help realize quick shift of optional devices such as wood fork, steel tube fork, etc.

Centralized lubrication system: automatic and manual modes are alternative, easy fueling, making longer duration and lower maintenance cost.

Electric balance for wheel loader: an electric device which helps to weigh the material load in the working process.

H·POWER
Outstanding Power
CG Global Products



Backhoe Loader 862H/866Htc/866H

Chenggong newly-designed backhoe loaders are energy saving, environmental friendly, driving comfortable with handsome appearance. They feature with HUSCO hydraulic components, hydraulic-controlled differential lock, spacious cab with adjustable and air-suspending & shock-absorbing seat, backward opened engine cover, professional excavator style curved arm, and bucket auto-reset system Tier III engine and extension arm are optional.



862H(CE)

- ◆ Tier III Cummins engine
- ◆ PCLS hydraulic pilot control system offers excellent control performance for achieving feather-working and satisfying different working requirement
- ◆ Side shift for digging device makes the machine work flexible
- ◆ Tool carrier loader linkage provides multi-functions and flexibility
- ◆ The end of digging equips holding valve
- ◆ Equipped with emergency steering

862H(Standard)

- ◆ Cummins engine provides strong power and low fuel consumption
- ◆ PCLS pilot control hydraulic system offers excellent control performance for achieving feather-working and satisfying the different working requirement
- ◆ Side shift for digging device makes the machine work flexible
- ◆ Tool carrier loader linkage provides multi-functions and flexibility

866Htc

- ◆ Carraro electrical-hydraulic steering, synchro-shifting transmission
- ◆ PCLS hydraulic pilot control system
- ◆ Equipped with standard extendible stick
- ◆ Tool carrier loader linkage provides multi-functions and flexibility
- ◆ Return-to-dig system is also available

866H

- ◆ Carraro electrical-hydraulic steering, synchro-shifting transmission
- ◆ Return-to-dig system shorten total working time and increase efficiency
- ◆ Equipped with standard boom

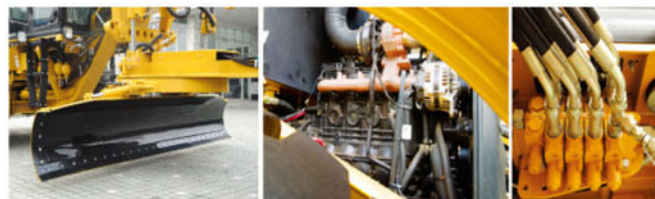
Main Specifications			862H(CE/Standard)	866Htc	866H
Engine	Model		QSB4.5/ Cummins 4BTAA3.9	Cummins 4BTA3.9/ Cummins 4BTAA3.9	Cummins 4BTA3.9/ Cummins 4BTAA3.9
	Rated Power/Rated Revolution	(kW/rpm)	82/2200	82/2200	82/2200
		(hp/rpm)	110/2200	110/2200	110/2200
Operating Mass (kg/lb)			10400/22928.1	9700/21384.8	9200/20282.5
Overall Dimensions	Overall Size (L*W*H) (mm/ft'in")		5934X2440X3966 19'5"x7'3"x13'	7461X2440X3920 24'5"x7'3"x12'9"	7313X2440X3920 23'4"x7'3"x12'9"
Loader	Dump Height (mm/ft'in")		2700/8'9"	2700/8'9"	2700/8'9"
	Discharge (i)		45	45	45
	Dump Reach (mm/ft'in")		787/2'6"	787/2'6"	710/2'3"
	Lift Capacity to Full Height (kN/kip)		34/7.65	34/7.65	33.7/7.66
	Bucket Breakout Force (kN/kip)		58.8/13.23	58.8/13.23	60/13.5
	Bucket Capacity (m³/yd³)		1.15/1.5	1.15/1.5	1.1/1.3
Backhoe	Digging Reach at Ground Level (mm/ft'in")		5980/6090/7175 19'6"/20'/23'6"	5990/6100/7184 19'6"/20'/23'6"	
	Max. Digging Depth (mm/ft'in")		4545/4658/5804 14'9"/15'2"/19"	4621/4741/5887 15'2"/15'5"/19'3"	
	Max. Working Height (mm/ft'in")		5993/6085/6910 19'6"/19'6"/22'6"	5917/6002/6827 19'4"/19'7"/22'7"	
(Standard/ Withdrawal/ Extension)	Max. Dump Clearance (mm/ft'in")		4244/4335/5161 13'9"/14'2"/16'9"	4168/4252/5078 13'7"/13'10"/16'7"	
	Bucket Dig Force (kN/kip)		73.1/72.2/72.2 16.4/16.2/16.2	73.1/72.2/72.2 16.4/16.2/16.2	
	Stick Dig Force (kN/kip)		43/42/30.4 9.7/9.5/6.8	43/42/30.4 9.7/9.5/6.8	
	Bucket Capacity (m³/yd³)		0.18-0.3 0.2-0.4	0.18-0.3 0.2-0.4	

*Optional devices: coupler, multi-function bucket, breaking hammer, soil drill, etc.



Motor Grader MG1320H

- CE certificated by TÜV
- Cummins engine QSB6.7 satisfying EURO III , EPA Tier III
- ZF transmission with six forward & three reverse
- Imported multi-way valve, accumulator and other braking components
- Independent hydraulic cooling system driven by hydraulic motor
- Spacious ROPS/FOPS cabin
- Cooling-heating air conditioner



Motor Grader MG1320C

- Optimized implements
- Backward opened engine cover made of glass fiber reinforced plastics
- Driving axle applying automatic control system for lubrication and oil temperature
- Imported multi-way valve, braking valve, liquid filling valve
- High strength rear frame, traction frame, and moldboard steering mechanism
- Spacious ROPS/FOPS cabin
- Shock absorbing seat and newly designed panel
- Electrical monitoring device
- Cooling-heating air conditioner



Main Specifications			MG1320H	MG1320C
Operating Mass (kg/lb)			17100/37699	16400/36155.8
Engine	Model		QSB6.7	C6121
	Rated Power (kW/HP)		164/223	162/212
	Speed @ Rated power (rpm)		2200	2200
Overall Dimensions	Standard	L*W*H (mm/ft'in")	8980x2600x3470 29'5"x8'5"x11'4"	8980x2600x3470 29'5"x8'5"x11'4"
	With Optional Equipment	L*W*H (mm/ft'in")	10876x2600x3470 35'7"x8'5"x11'4"	10876x2600x3470 35'7"x8'5"x11'4"
Wheel Base	Front Axle to Mid Tandem (mm/ft'in")		6210/20'4"	6290/20'6"
	Between Tandem Axles (mm/ft'in")		1553/5'1"	1553/5'1"
Tire Center Lines (mm/ft'in")			2150/7'	2150/7'
Steering System	Steering Range (i)		± 45	± 45
	Articulation Angle (i)		± 20	± 20
	Min. Turning Radius (mm/ft'in")		7700/25'3"	8400/27'5"
Moldboard	Width (mm/ft'in")		3960/13'	3960/13'
	Height (Arched Length) (mm/ft'in")		650/2'2"	650/2'2"
	Max. Tilt Angle (i)		90	90
	Rotating Angle (i)		360	360
	Cutting Angle Adjusting Range (i)		42-73	42-73
	Max. Lift above Ground (mm/ft'in")		410/1'3"	410/1'3"
	Max. Depth of Cut (mm/ft'in")		440/1'4"	440/1'4"
	Max. Shoulder Reach (Left/Right) (mm/ft'in")		1440/2090 4'7"/6'8"	1440/2090 4'7"/6'8"

Optional Devices

Scarifier	Working Width (mm/ft'in")	1250/4'1"
	Scarifying Depth (mm/ft'in")	280/11"
	Scarifier Shank Holders (Piece)	11
Rear-mounted Ripper	Working Width (mm/ft'in")	2000/6'6"
	Max. Ripping Depth (mm/ft'in")	315/1'
	Ripper Shank Holders (Piece)	5
Dozing Plate	Width(mm/ft'in")	2740/8'10"
	Height(mm/ft'in")	920/3'
	Max. Dozing Depth(mm/ft'in")	205/8'



CHENG//GONG

.....
SICHUAN CHENGDU CHENGGONG CONSTRUCTION MACHINERY CO., LTD

Address: No.668 Motor City Avenue, Chengdu, Sichuan, P.R. China 610100

Tel:0086-28-88452381, 88452404,88452377 ,88452410

Service Tel.: 0086-28-88452381, Fax: 0086-28-88452376

Website: www.cgloader.com

Email: export@chinachenggong.com

Note: All machines are subject to actual products. We reserve the rights of making any change to the configuration and specification of our products without prior notice due to the continuous technical improvement of Chengong products.

Contact Information For Local Distributor