

**INDOTARA<sup>®</sup>**

**PT. INDOTARA PERSADA**

Jakarta Head Office :  
Graha Kencana Building Lt. 10 Suite 10F  
Jl. Raya Perjuangan 88  
Kebon Jeruk Jakarta Barat 11530  
Phone : 021 - 583 55 398  
Fax. : 021 - 583 55 400  
email : sales@indotara.co.id

Surabaya Branch Office :  
Bumi Mandiri Tower I Lt. 10 Suite 1008  
Jl. Jend. Basuki Rachmat 129-137  
Surabaya 60271  
Phone : 031 - 535 3001  
Fax. : 031 - 535 3002  
email : sales-sby@indotara.co.id

Medan Branch Office :  
Kompleks MMTC Warehouse Blok C-7  
Jl. Pasar V, Pancing  
Medan 20371  
Phone : 061 - 800 323 24  
Fax. : 061 - 800 322 25  
email : sales-mdn@indotara.co.id

Bandung Branch Office :  
Wisma HSBC Lt. 6 Suite B  
Jl. Asia Afrika No. 116  
Bandung, Jawa Barat 40112  
Phone : 022 - 426 7333  
Fax. : 022 - 426 7330  
email : sales-bdg@indotara.co.id





# Shigemitsu

## With High Quality and Competitive Price

Shigemitsu goal is to provide customers with “high quality, low cost” products. Let users work more efficiency and safety in any time and any place.

Shigemitsu only provide you with suitable products according to your demands. Our design inspiration is from customers, we'll take “the customer as the center”, seriously listen to the advice of customers, and reflected in the design, such as different option device, mobility, stowed size, all of that reflect Shigemitsu's philosophy “Take the Customer as Center”.

Shigemitsu insist on that : do not use inferior materials for more profit and decline in the quality of the situation is, do not decline the quality to save the cost.

Shigemitsu products widely used in : construction, electrical power industry, ships, municipal engineering, bridge construction, exhibition, advertisement, storage, docks and airports, etc.



## Shigemitsu Full Range of Product



## Model

- 1

**SE-Mini Series  
Electric Scissor Lift**  
SE-50MINI/ED  
SE-60MINI/ED  
SEM-50MINI  
SEM-60MINI  
SE-50MINI/ED PLUS  
SE-60MINI/ED PLUS
- 7

**SD Series  
Self-Propelled Rough  
Terrain Scissor Lift**  
SD-100RT  
SD-120RT  
SD-140RT  
SDW-120RT  
SDW-150RT  
SDW-180RT
- 11

**SE Series  
Electric Self-Propelled  
Scissor Lift**  
SE-65N  
SE-80N  
SE-80C  
SE-80W  
SE-100C  
SE-100W  
SE-120W  
SE-140W  
SE-160W
- 17

**SEA Series  
Auxiliary Drive  
Scissor Lift**  
SE-A50S ----- SE-A140H
- SEM Series  
Mobile Electric  
Scissor Lift**  
SE-M50S ----- SE-M140H
- 19

**TB Series  
Self-Propelled  
Telescopic Booms**  
TB-200  
TB-215J  
TB-270  
TB-285J  
TB-330  
TB-350J  
TB-390  
TB-410J
- 27

**AB Series  
Self-Propelled  
Articulated Booms**  
AB-140  
AB-140J  
AB-160  
AB-160J  
AB-200J  
AB-140 RT  
AB-140J RT  
AB-160 RT  
AB-160J RT  
AB-200J RT
- 39

**TM Series  
Truck-Mounted Platform**  
TM-1470C  
TM-1770C  
TM-2110C  
TM-2512C  
TM-2815C
- 41

**SML Series  
Super Material Lift**  
SML-10  
SML-15  
SML-20  
SML-25
- 43

**SAP Series  
Aerial Work Platform**  
SAP-20  
SAP-26  
SAP-32  
SAP-40
- 45

**SLP Series  
Sleeve Type Aerial  
Work Platform**  
SLP-26  
SLP-32  
SLP-40
- 47

**DAP Series  
Double Masts Aerial  
Work Platform**  
DAP-10  
DAP-12  
DAP-14  
DAP-16  
DAP-18
- 49

**SSAP Series  
Self-Propelled Aerial  
Work Platform**  
SSAP-55  
SSAP-65  
SSAP-80
- 51

**SSAP-J Series  
Self-Propelled Aerial  
Work Platform**  
SSAP-80J  
SSAP-100J



Standard Features

- Proportional control
- Self-lock gate on platform
- Extended platform
- Drivable at full height
- Non marking tire
- 4 x 2WD
- Explosion-proof of the tubing
- Automatic brake system
- Emergnecy lowering system
- Emergency stop button
- Tilt sensor with alarm
- All motion alarm
- Horn
- Hour meter
- Safety brackets
- Forklift pockets
- Charger protection
- Flashing beacon

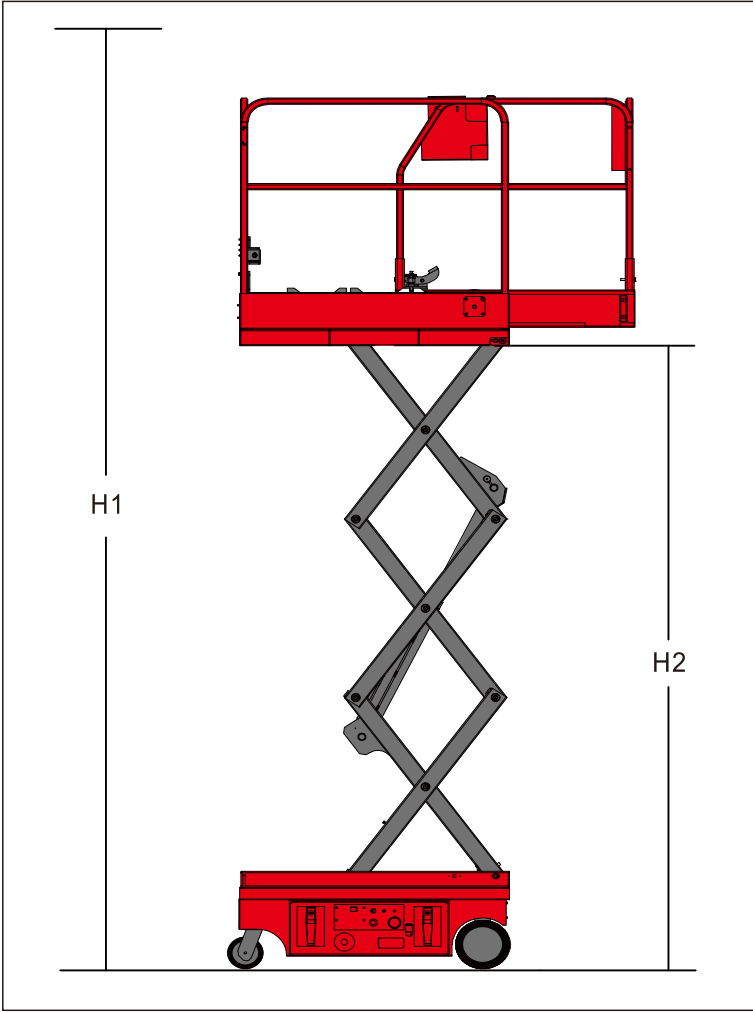
Option Features

- Overload sensor with alarm
- AC power to platform
- Single extension platform

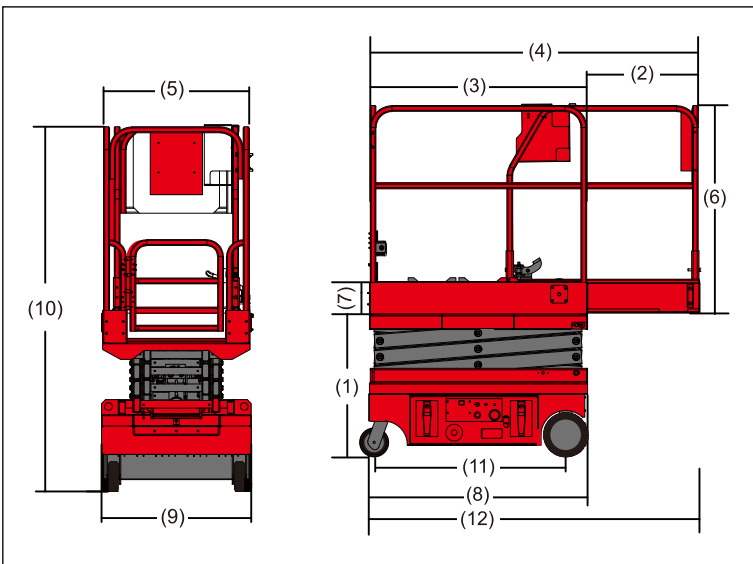
Model	SE50MINI/ED	SE60MINI/ED
	Metric System	
Working height max H1	5m	6m
Platform height max H2	3m	4m
Outreach max (2)	0.55m	0.55m
Lifting Capacity	240kg	240kg
Lifting Capacity (Extended Platform)	100kg	100kg
Weight	620kg	645kg
Platform size L (3)	1.15m	1.15m
Platform size W (5)	0.76m	0.76m
Platform Size H (6)	1.1m	1.1m
The length of Platform extended (4)	1.7m	1.7m
Skirting Board Height (7)	0.15m	0.15m
Stowed Size (LxW) (8*9)	Metric system: 1.15mx0.76m in: 3ft 10 in * 2 ft 4 in	
Stowed Height (10)	1.8m	1.9m
Length of the machine with platform extended (12)	1.7m	1.7m
Hydraulic tank Capacity (L)	2	2
Gradeability	25%	25%
Wheelbase (11)	1m	1m
Ground Clearance	0.06m	0.06m
Inside rotation radius	0m	0m
Load Number Max	2	2
Raised time/ lowering time (s)	28/25	31/27
Travel Speed	3km/h	3km/h
Safe Speed	0.8km/h	0.8km/h
Vertical Tilt°	2	2
Lateral Tilt°	1	1
Power Source	24V/95AH	24V/95AH
Tire Size	Solid tire 230mm	Solid tire 230mm

- The metric system height is 2 meters higher than platform height, the imperial height is 6 feet than platform height
- CE/AU market, SE-MINI can be used in indoor and outdoor, to accomodate one person
- Climbing ability is suitable for driving on the slope, the slope classification reference operation manual
- Weight according to the options and standards vary from country to country

SE-MINI Working Range



SE-MINI Collecting Chart





SEM MINI SERIES  
MOBILE ELECTRIC SCISSOR LIFT

Standard Features

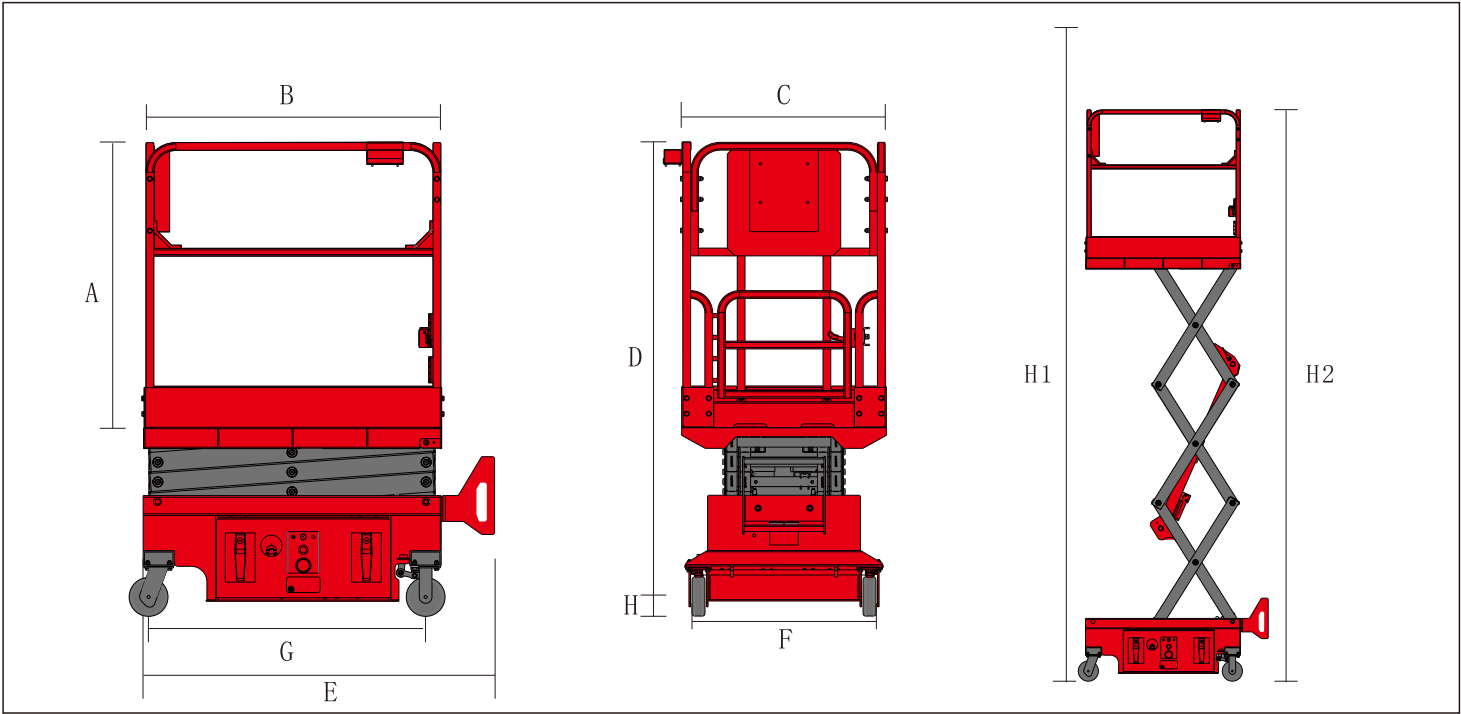
- Charge Indicator
- Platform self-locked door
- Level Indicator
- Security overhaul rod
- Emergnecy lowering system
- Emergency stop button
- Dual front wheel brake
- Standard transportation forklift holes
- Non-mark brake tires
- Charge protection system

Option Features

- The AC power connected to the platform
- Buzzer
- Flash light

Model	SEM50MINI	SEM60MINI
Working height max H1	5	6m
Platform height max H2	3m	4m
Lifting Capacity Kg	240	0.55m
Weight Kg	465	100kg
Platform Size, (B*C*A)	1.15 x 0.76 x 1.1	645kg
Skiritng Board Height m	0.15	1.15m
Stowed Size, m (E*F)	1.15 x 0.76	0.76m
Stowed Height m (D)	1.85	1.1m
Hydraulic Tank Capacity L	2	1.7m
Wheelbase m G	1.07	0.15m
Ground Clearance m H	0.06	0.06
Vertical Tilt°	2	2
Lateral Tilt°	1	1
Load Number Max	2	2
Raised Time/ Lowering Time s	28/24	35/18
Power Source	12V/100AH	12V/100AH
Tire Size	Non-Marking Wheels 150mm	Non-Marking Wheels 150mm

SEM Collecting Chart





SE MINI/ED PLUS SERIES  
ELECTRIC SELF-PROPELLED MINI SCISSOR LIFT

Standard Features

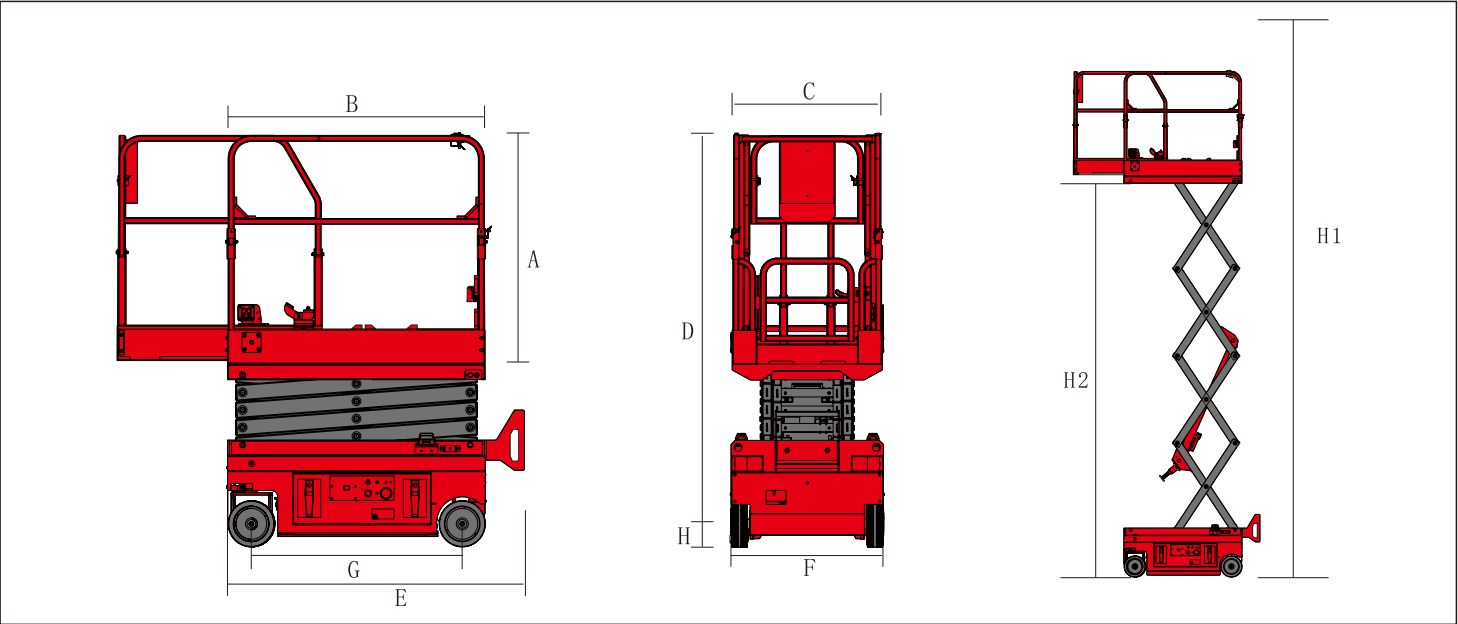
- Proportional control
- Self-lock gate on platform
- Extended platform
- Drivable at full height
- Non marking tire
- 4 x 2WD
- Automatic brake system
- Emergnecy lowering system
- Emergency stop button
- Explosion-proof of the tubing
- Diagnosis system
- Tilt sensor with alarm
- Horn
- Flash light
- Hour meter
- Safety brackets
- Forklift pockets

Option Features

- Overload sensor with alarm
- AC power to platform
- Pothole Guards

Model	SE50MINI/ED Plus	SE60MINI/ED Plus
Working height max (m) H1	5	6.4
Platform height max (m) H2	3	4.4
Outreach Capacity (Kg)	0.55	0.55
Lifting Capacity (Kg)	240	240
Lifting Capacity (Kg) (Extended Platform)	100	100
Weight (Kg)	760	810
Platform Size (L x W x H) m B*C*A	1.28 x 0.76 x 1.1	1.28 x 0.76 x 1.1
The Length of Platform Extended (m)	1.8	1.8
Skirting Board Height (m)	0.17	0.17
Stowed Size (L x W) m E*F	1.49 x 0.76	1.49 x 0.76
Stowed Height (m) D	2.03	2.03
Height of The Machine With Platform Folded (m)	1.5	1.59
Hydraulic Tank Capacity (L)	2	2
Gradeability	25%	25%
Wheelbase (m) G	1.05	1.05
Ground Clearance (m)	0.06	0.06
Inside Rotation Radius (m)	0.35	0.35
Load Number Max	2	2
Raised Time/ Lowering Time (s)	20/17	23/19
Traction Speed (km/h)	3	3
Safe Speed (km/h)	0.8	0.8
Vertical Tilt°	3	3
Lateral Tilt°	2	2
Power Source	24V	24V
Tire Size (mm)	Solid Non-Marking Tires 230	Solid Non-Marking Tires 230

SEM MINI/ED PLUS Collecting Chart





SD SERIES  
SELF-PROPELLED ROUGH TERRAIN SCISSOR LIFT



Standard Features

- Foldable guardrail
- Diagnosis system
- AC wiring system
- 4 Wheel Drive
- Tilt level sensor with an audible alarm
- Lowering alarm
- Horn
- Hour meter
- Emergency pump
- Proportional controls
- Solid rough tire
- Safety brackets

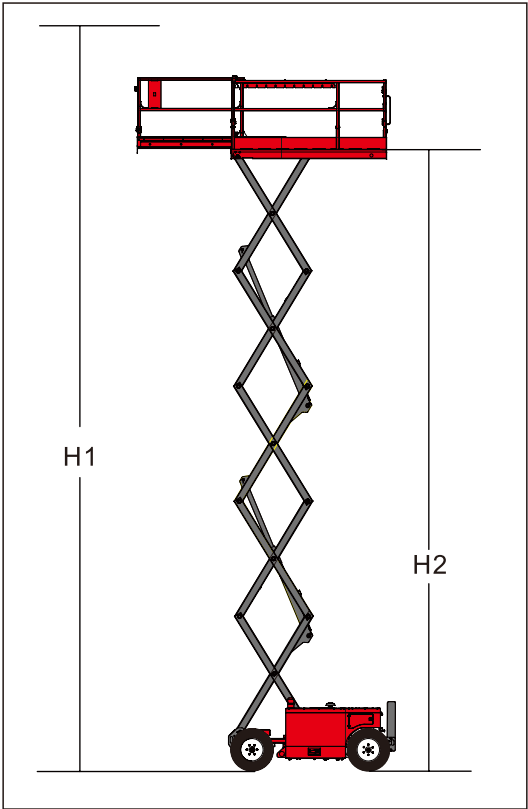
Option Features

- Automatic leveling hydraulic outriggers
- Air line to platform
- DC power supply
- Motor cold starting components
- Overload sensor
- Moveable alarm components
- Non-mark rough tire

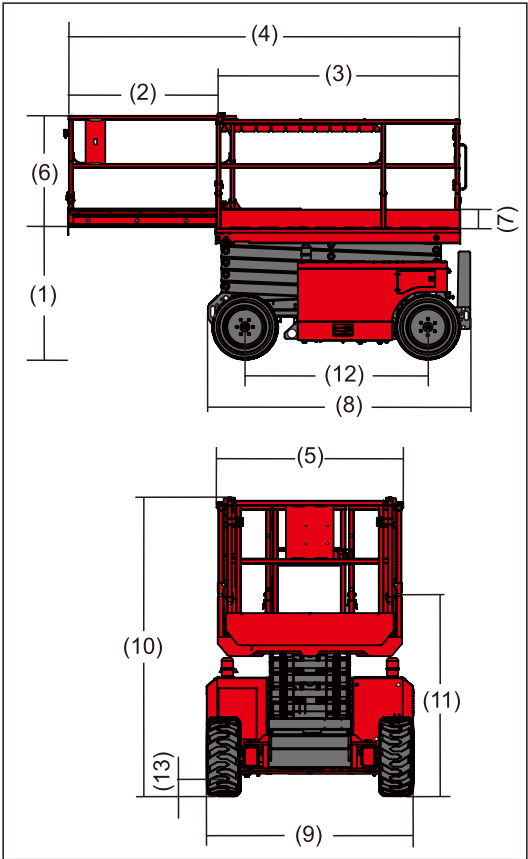
Model	SD100RT	SD120RT	SD140RT
Working height max (m) H1	10	12	14
Platform height max (m) H2	8	10	12
(1) Platform Height min (m) (1)	1.1	1.23	1.36
(2) Outreach (m) (2)	1.5	1.5	1.5
Lifting Capacity (Kg)	567	454	345
Lifting Capacity(Kg) (Extended Platform)	136	136	136
Platform Size			
(3) Lateral Length (m)(3)	2.5	2.5	2.5
(4) Extended Length (m)(4)	4	4	4
(5) Lateral Width (m)(5)	1.6	1.6	1.6
(6) Fence Height (m)(6)	1.15	1.15	1.15
(7) Skirting Board Height (m)(7)	0.15	0.15	0.15
Stowed Size			
(8) Stowed Length (m)(8)	2.67	2.67	2.67
(9) Width (m)(9)	1.75	1.75	1.75
(10) Height (m)(10)	2.38	2.5	2.6
(11) Folded Height (m)(11)	1.68	1.8	1.98
(12) Wheelbase (m)(12)	1.85	1.85	1.85
Ground Clearance (m)(13)	0.17	0.17	0.17
Turn Diameter (m)(Inside)	1.52	1.52	1.52
Load Number Max	3	3	3
Raised Time (s)	30	43	50
Lowering Time (s)	40	47	47
Traction Speed (km/h)	4.0	4.0	4.0
Safe Speed (Km/h)	0.8	0.8	0.8
Vertical Tilt*	3	3	3
Lateral Tilt*	2	2	2
Control	Proportional Control		
Drive	4 Wheels Drive		
Weight (Kg)	3280	3830	4200
Weight (Kg)(With Outriggers)	3680	4280	4600
Power Source	Kubota D1105		
Hydraulic Tank Capacity (L)	68	68	68
Fuel Tank Capacity (L)	57	57	57
Gradeability	35%	35%	30%
*Outrigger Level Ability Max			
Front to Rear	6.6°	6.6°	6.6°
Left to Right	10.6°	10.6°	10.6°
Tire Size (mm)	Solid Tires 26*12-16.5		

- The metric system height is 2 meters higher than platform height, the imperial height is 6 feet than platform height
- CE/AU market, SD can be used in indoor and outdoor, to accomodate Two person
- Climbing ability is suitable for driving on the slope, the slope classification reference operation manual
- Weight according to the options and standards vary from country to country

SD Working Range



SD Collecting Chart





SDW SERIES  
SELF-PROPELLED ROUGH TERRAIN SCISSOR LIFT



Standard Features

- Foldable guardrail
- Diagnosis system
- AC wiring system
- 4 Wheel Drive
- Tilt level sensor with an audible alarm
- Lowering alarm
- Horn
- Hour meter
- Emergency pump
- Proportional controls
- Solid rough tire
- Safety brackets

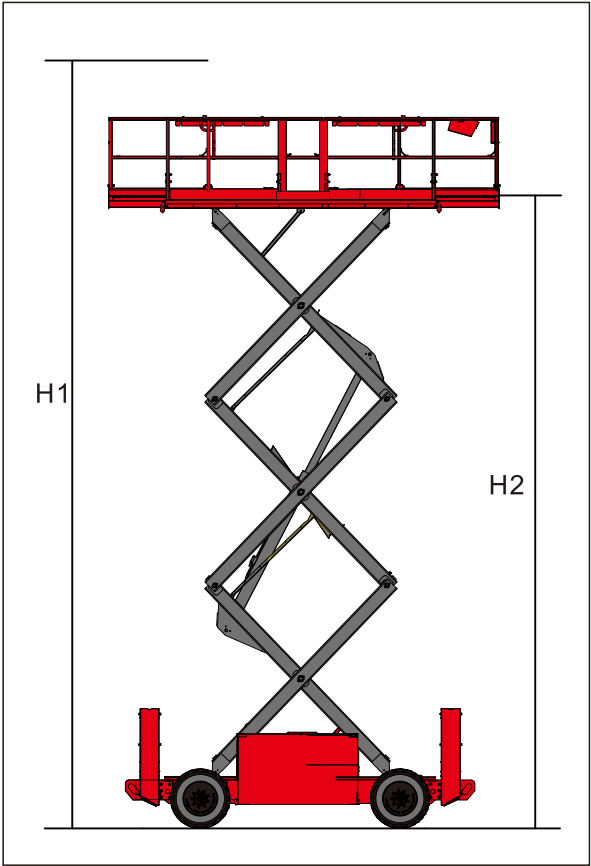
Option Features

- Automatic leveling hydraulic outriggers (SDW120RT/SDW150RT)
- Air line to platform
- DC power supply
- Motor cold starting components
- Overload sensor
- Dual flashing beacon
- Moveable alarm components
- Non-mark rough tire

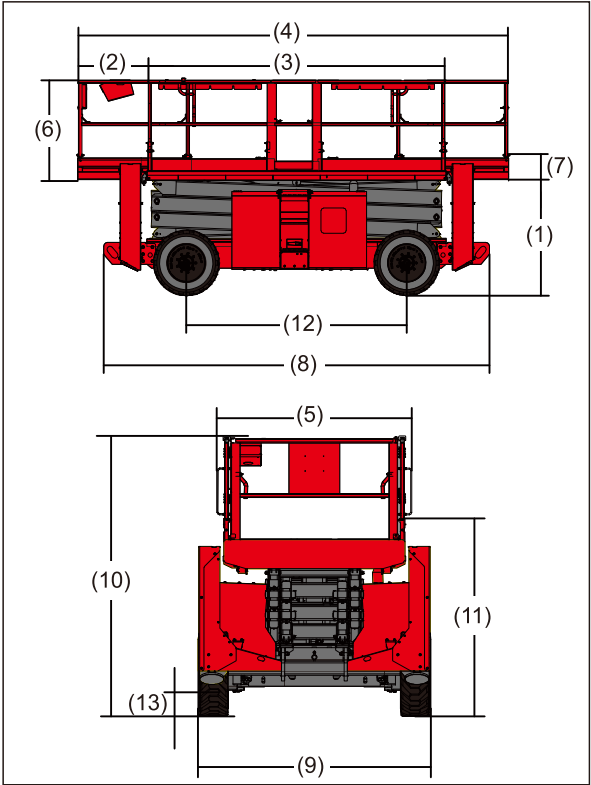
Model	SDW120RT	SDW150RT	SDW150RT
Working height max (m) H1	12.00	15.00	18.00
Platform height max (m) H2	10.00	13.00	16.00
(1) Platform Height min (m) (1)	1.20	1.20	1.20
(2) Outreach (m) (2)	1.20	1.20	1.20
Lifting Capacity (Kg)	1000 (Single Ext. Platform)	680 (Single Ext. Platform)	680 (Single Ext. Platform)
	900 (Double Ext. Platform)	570 (Double Ext. Platform)	570 (Double Ext. Platform)
Lifting Capacity(Kg) (Extended Platform)	230	230	230
Platform Size			
(3) Lateral Length (m)(3)	3.90	3.90	3.90
(4) Extended Length (m) (Single Extended Platform)	5.10	5.10	5.10
Extended Length (m) (Single Extended Platform)	6.30	6.30	6.30
(5) Lateral Width (m)(5)	2.18	2.18	2.18
(6) Fence Height (m)(6)	1.15	1.15	1.15
(7) Skirting Board Height (m)(7)	0.15	0.15	0.15
Stowed Size			
(8) Stowed Length (m) (Single Extended Platform)	4.47	4.47	---
Stowed Length (m) (Double Extended Platform)	3.97	3.97	---
Stowed Length m (With Outriggers)	4.90	4.90	4.90
Width/ m (9)	2.29	2.29	2.29
Height/ m (10)	2.73	2.9	3.26
(11) Folded Height (m)(11)	2	2.19	2.47
(12) Wheelbase (m)(12)	2.80	2.80	2.80
Ground Clearance (m)(13)	0.32	0.32	0.32
Turn Diameter (m)(Inside)	2.72	2.72	2.72
Turn Diameter (m)(Outside)	5.93	5.93	5.93
Raised Time (s)	60	80	102
Lowering Time (s)	77	90	107
Traction Speed (km/h)	6.4	6.4	6.4
Safe Speed Km/h	1.0	1.0	1.0
Drive Height/ m	All Height	9.6	9.6
Control	Proportional Control		
Drive	4 Wheels Drive		
Weight (Kg)	6282	6950	8700
Power Source	Diesel		
Hydraulic Tank Capacity (L)	115	115	115
Fuel Tank Capacity (L)	115	115	115
Gradeability	45%	45%	40%
*Outrigger Level Ability Max			
Front to Rear	7°	7°	7°
Left to Right	11°	11°	11°
Tire Size (mm)	Solid Tires 33*12-20		

- The metric system height is 2 meters higher than platform height, the imperial height is 6 feet than platform height
- CE/AU market, SDW can be used in indoor and outdoor, to accomodate Three person
- Climbing ability is suitable for driving on the slope, the slope classification reference operation manual
- Weight according to the options and standards vary from country to country

SDW Working Range



SDW Collecting Chart





Standard Features

- SE-N series working height is 6.5m (about 21 feet & 8m, about 26 feet)
- The platform can outreach 0.9m (about 3 feet), & the machine can be 2.52m (about 8.26m)
- Compact design, can be easily passed single standard door and enter the lift, and so on
- The min.lift capacity is 230kg (about 506 pound), the max. lift capacity is 270kg (594 pound)
- Proportional controls for lift and drive functions
- Automatic 25 Amp battery charger provides strong power vehicle
- Safe distance protection when the platform lowering down (CE)
- Manual Emergency platform lowering valve, when there is no power, the machine can be safety lower down
- Emergency stop at both platform and ground controls
- Drive speed interlock limits speed while elevated
- Multiple disc brakes provide smooth deceleration
- When there is no power, manual brake release function can move the machine under the circumstances when there is no other forklift, lifting equipment and so on
- Pothole guards protect the machine don't tilting down when the machine moved on the raised position
- Non-marking tires make sure there is no damage and no marks on the ground
- It has the 30% gradeability, and at the same time each machine equipped tilt sensor alarm to make sure the user can use the machine correctly
- Diagnostic system

Option Features

- Motion alarm
- Platform swing gate
- Air line to platform
- Dual flashing beacon
- Maintenance-free battery
- Horn
- Platform work light
- Foldable platform
- Key-type lock sliding door
- Anti-collision system
- Top limit protection auto-stop device

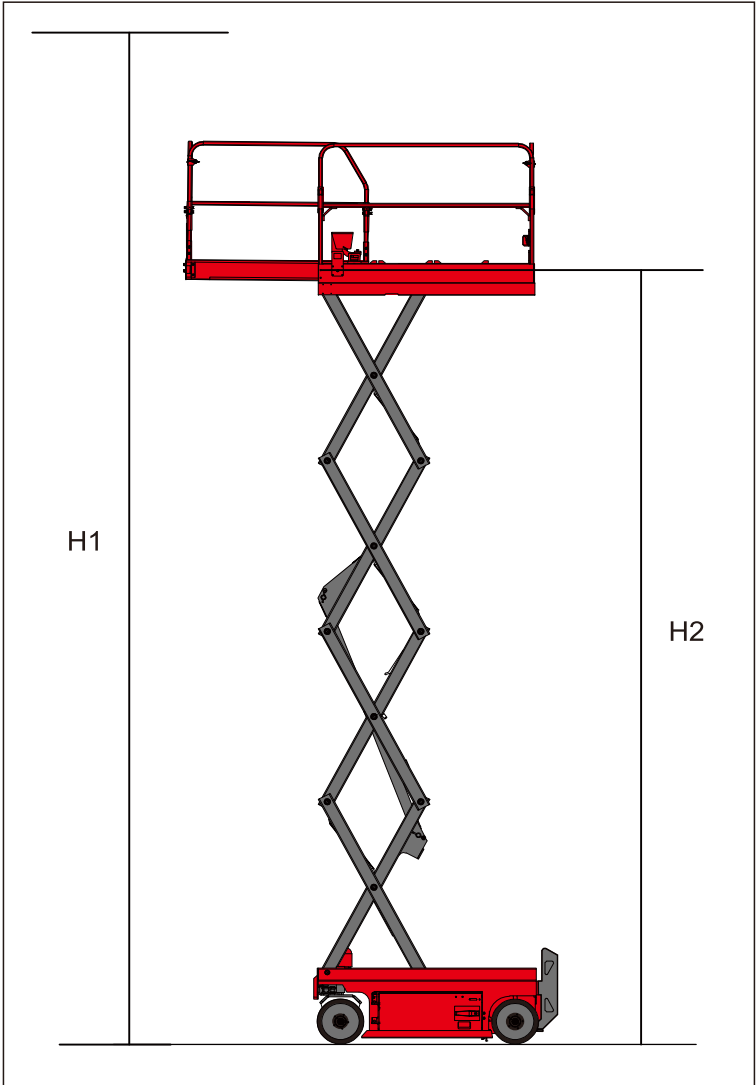


Model	SE65N	SE80N
Working height max (m) H1	6.5	7.8
Platform height max (m) H2	4.5	5.8
(2) Outreach (m) (2)	0.9	0.9
Lifting Capacity (Kg)	270	230
Lifting Capacity (Kg) (Extended Platform)	115	115
Weight (Kg) ANSI/CSA Standard	1164	1285
Weight (Kg) CE/AUS Standard	1235	1540
Platform Size (3) x (5) x (6)(L x W x H) m	1.64 x 0.75 x 1.1	
The Length of Platform Extended (m) (4)	2.54	
(7) Skirting Board Height (m)(7)	0.15	
Stowed Size (L x W) (8) x (9) m	1.85 x 0.77	
Stowed Height (m) (10)	2.04 Fixed Platform	2.13 Fixed Platform
Length of the machine with platform extended (m) (13)	2.75	
Height of the machine with platform folded (m) (11)	1.69	1.69
Hydraulic Tank Capacity (L)	15	
Gradeability	30%	30%
Wheelbase (m) (12)	1.32	
Ground Clearance (m)	0.06	
Pothole Protection Board Ground Clearance (m) (Down)	0.02	
Inside Rotation Radius (m)	0	
Outside Turning Radius (m)	1.56	
Load Number Max	2	
Raised Time/ Lowering Time (s)	11/8.5	14/11
Traction Speed (km/h)	3.8	
Safe Speed Km/h	0.7	
Vertical Tilt° ANSI CSA	3	3
Vertical Tilt° CE/ AUS	2	2
Lateral Tilt° ANSI CSA	2	2
Lateral Tilt° CE/ AUS	1.5	1.5
Power Source	4 x 6V ; 225Ah	
Tire Size (mm)	356 x 114 x 254	
Drive Model	Hydraulic Drive / Electric Drive	
Drive Mode	HD/ED	

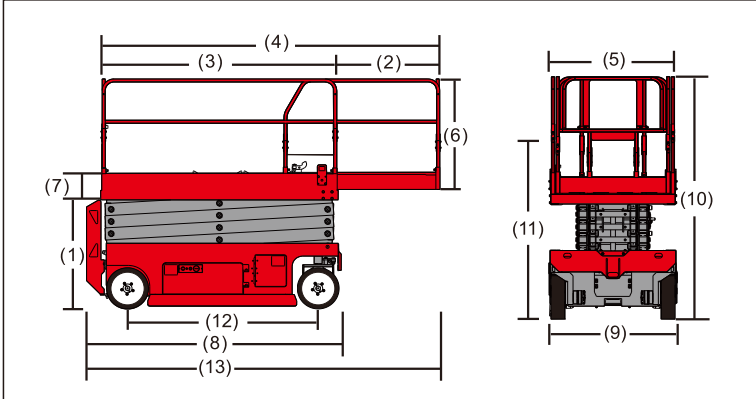
- The metric system height is 2 meters higher than platform height, the imperial height is 6 feet than platform height
- In the rising mode, the machine is designed to operate on a solid flat surface
- Climbing ability is suitable for driving on the slope, the slope classification reference operation manual
- Weight according to the options and standards vary from country to country

Shigemitsu provides user with both hydraulic drive (HD) and electrical drive (ED) walking modes, in order to meet the demands of different customers

SE-N Working Range



SE-N Collecting Chart





Standard Features

- SE-C Series working height is form 8m (about 26 feet and 10m About 32 Feet)
- The platform can outreach 1m (SE-C Series)
- Compact design, SE-C series can be easily passed single standard door, the length about platform can be the same with SE-W series, The length can be 3.2m after the extended
- The min. lift capacity is 230kg, max. lift capacity is 350kg
- Proportional controls for lift and drive functions
- Automatic 25 Amp battery charger provides strong power for vehicle
- Safe distance protection when the platform lowering down (CE)
- Manual Emergency platform lowering valve, when there is no power, the machine can be safety lower down
- Emergency stop at both platform and ground controls
- Drive speed interlock limits speed while elevated
- Multiple disc brakes provide smooth deceleration
- When there is no power, manual brake release function can move the machines under the circumstances when there is no other forklift, lifting equipment and so on..
- Pothole guards protect the machine don't tilting down when the machince moved on the raised position
- Non-marking tires make sure there is no damage and no marks on the ground
- AC wiring to platform
- Tilt level sensor with an audible alarm
- Beeper horn
- Hour meter
- Safety brackets
- Battery charge indicator
- Forklift pockets
- Diagnosis system
- Extended platform

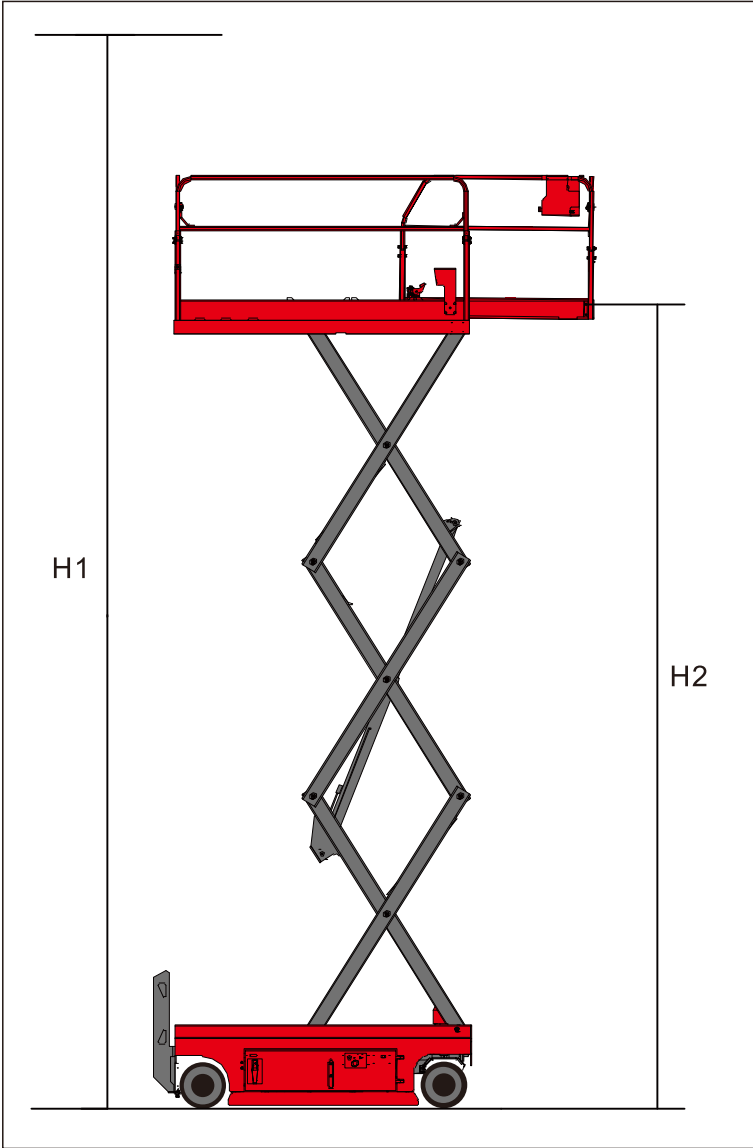
Option Features

- Motion alarm
- Platform swing gate
- Air line to platform
- Dual flashing beacon
- Maintenance-free battery
- Horn
- Platform work light
- Foldable platform
- Key-type lock sliding door
- Anti-collision system
- Top limit protection auto-stop device

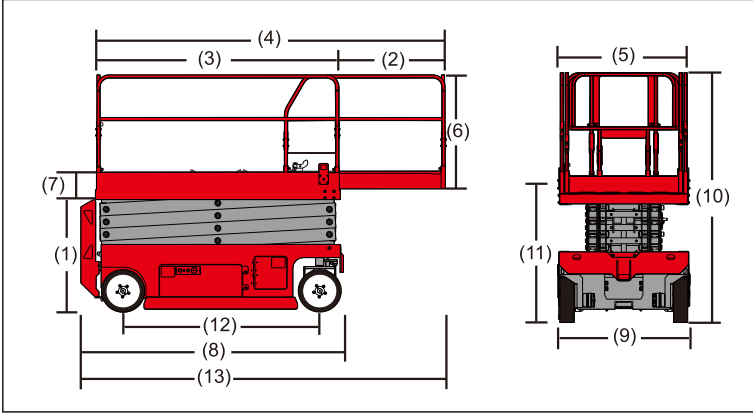


Model	SE80C	SE100C
Working height max (m) H1	8	10
Platform height max (m) H2	6	8
(2) Outreach (m) (2)	1	1
Lifting Capacity (Kg)	350	230
Lifting Capacity (Kg) (Extended Platform)	120	120
Weight (Kg) ANSI/CSA Standard	1690	1855
Weight (Kg) CE/AUS Standard	1905	2000
Platform Size (3) x (5) x (6)(L x W x H) m	2.25 x 0.8 x 1.1	
The Length of Platform Extended (m) (4)	3.2	
(7) Skirting Board Height (m)(7)	0.15	
Stowed Size (L x W) (8) x (9) m	2.42 x 0.8	
Stowed Height (m) (10)	2.2	2.3
Length of the machine with platform extended (m) (13)	3.4	
Height of the machine with platform folded (m) (11)	1.73	7.86
Hydraulic Tank Capacity (L)	15	
Gradeability	30%	30%
Wheelbase (m) (12)	1.85	
Ground Clearance (m)	0.1	
Pothole Protection Board Ground Clearance (m) (Down)	0.019	
Inside Rotation Radius (m)	0	
Outside Turning Radius (m)	2.12	
Load Number Max	2	
Raised Time/ Lowering Time (s)	27/29	35/17
Traction Speed (km/h)	3.4	
Safe Speed Km/h	0.7	
Vertical Tilt° ANSI CSA	3	3
Vertical Tilt° CE/ AUS	2	2
Lateral Tilt° ANSI CSA	2	2
Lateral Tilt° CE/ AUS	1.5	1.5
Power Source	4 x 6V ; 225Ah	
Tire Size (mm)	356 x 114 x 254	
Drive Model	Hydraulic Drive / Electric Drive	
Drive Mode	HD/ED	

SE-C Working Range



SE-C Collecting Chart



- The metric system height is 2 meters higher than platform height, the imperial height is 6 feet than platform height
- In the rising mode, the machine is designed to operate on a solid flat surface
- Climbing ability is suitable for driving on the slope, the slope classification reference operation manual
- Weight according to the options and standards vary from country to country

Shigemitsu provides user with both hydraulic drive (HD) and electrical drive (ED) walking modes, in order to meet the demands of different customers



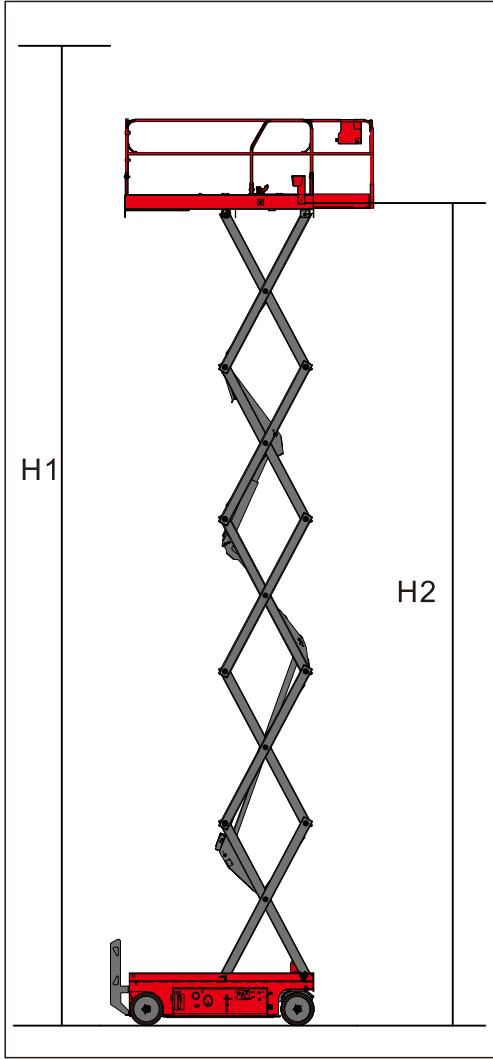
Standard Features

- SE-W Series working height is form 8m (about 26 feet and 10m About 32 Feet)
- The platform can outreach 1m
- SE-W series can be easily passed double standard door, large lift capacity, min. lift capacity is 350kg, max. lift capacity is 550kg
- Proportional controls for lift and drive functions
- Automatic 25 Amp battery charger provides strong power for vehicle
- Safe distance protection when the platform lowering down (CE)
- Manual Emergency platform lowering valve, when there is no power, the machine can be safety lower down
- Emergency stop at both platform and ground controls
- Drive speed interlock limits speed while elevated
- Multiple disc brakes provide smooth deceleration
- When there is no power, manual brake release function can move the machines under the circumstances when there is no other forklift, lifting equipment and so on..
- Pothole guards protect the machine don't tilting down when the machince moved on the raised position
- Non-marking tires make sure there is no damage and no marks on the ground
- AC wiring to platform
- Tilt level sensor with an audible alarm
- Beeper horn
- Hour meter
- Safety brackets
- Battery charge indicator
- Forklift pockets
- Diagnosis system
- Extended platform

Option Features

- Motion alarm
- Platform swing gate
- Air line to platform
- Dual flashing beacon
- Maintenance-free battery
- Horn
- Platform work light
- Foldable platform
- Key-type lock sliding door
- Anti-collision system
- Top limit protection auto-stop device

SE-W Working Range

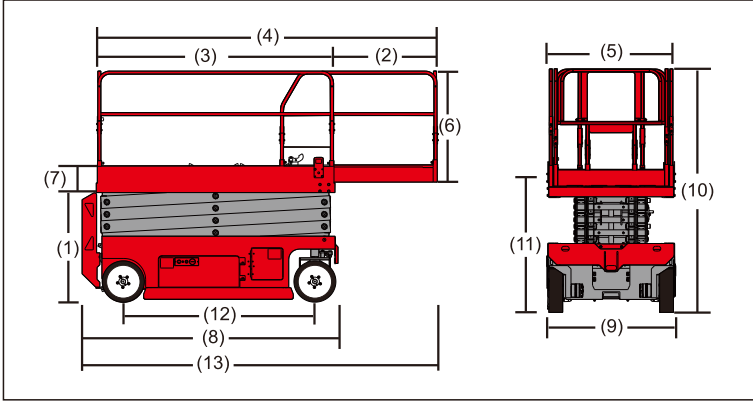


Model	SE80W	SE100W	SE120W	SE140W	SE160W
Working height max H1	8	10	12	14	16
Platform height max H2	6	4m8	10	12	14
Outreach max (2)	1	1	1	1	1
Lifting Capacity	550	450	320	350	230
Lifting Capacity (Extended Platform)	120	120	120	120	100
Weight (Kg) ANSI/CSA Standard	2010	2125	2490	2690	3280
Weight (Kg) CE/AUS Standard	2100	2520	2950	3245	3400
Platform size (3 x (5) x (6)(L x W x H) m	2.3 X 1.15 X 1.1				
The Length of Platform Extended (m)(4)	3.3	3.3	3.3	3.3	3.3
Skirting Board Height (m) (7)	0.172	0.172	0.172	0.172	0.172
Stowed Size (8) x (9)(LxW) m	2.42 X 1.2				
Stowed Height (m)(10)	2.12	2.25	2.38	2.50	2.64
Length of the machine with platform extended (m)(13)	3.5	3.5	3.5	3.5	3.5
Height of the machine with platform folded (m) (11)	1.56	1.69	1.82	1.95	2.08
Hydraulic tank Capacity (L)	15	15	25	25	25
Gradeability	30%	30%	25%	25%	25%
Wheelbase (m) (12)	1.85				
Ground Clearance (m)	0.1				
Pothole Protection Board Ground Clearance (m) (down)	0.019				
Inside Rotation Radius	0				
Outside Turning Radius	2.3				
Load Number Max	2				
Raised time/ lowering time (s)	32/30	45/30	55/37	61/42	80/46
Traction Speed (km/h)	3.4				
Safe Speed	0.7				
Vertical Tilt° ANSI CSA	3				1.5
Vertical Tilt° CE/AUS	2				---
Lateral Tilt° ANSI CSA	2				1
Lateral Tilt° CE/AUS	1.5				---
Power Source	4 x 6V ; 225Ah			4 x 6V ; 225Ah	
Tire Size	406 x 127 x 318				
Drive Model	Hydraulic Drive or Electric Drive				
Drive Mode	HD/ED				

- The metric system height is 2 meters higher than platform height, the imperial height is 6 feet than platform height
- In the rising mode, the machine is designed to operate on a solid flat surface
- Climbing ability is suitable for driving on the slope, the slope classification reference operation manual
- Weight according to the options and standards vary from country to country

Shigemitsu provides user with both hydraulic drive (HD) and electrical drive (ED) walking modes, in order to meet the demands of different customers

SE-W Collecting Chart





SE-A SERIES

Standard Features

- Electric Self-propelled, can operate by one person for drive and work in high position
- Hydraulic line rupture protection device
- Screw support leveling device
- Emergency stop button
- Emergency lower valve when there is no power
- Overload safety protection device
- Rain-proof control box
- Automatically battery charger

Option Features

- Extended Platform (6-12m)

SE-M SERIES

Standard Features

- Electric Self-propelled, can operate by one person for drive and work in high position
- Hydraulic line rupture protection device
- Screw support leveling device
- Emergency stop button
- Emergency lower valve when there is no power
- Overload safety protection device
- Rain-proof control box
- Automatically battery charger

Option Features

- Power : AC220V (6-11m) DC24V/48V Manual hydraulic power
- Explosion-proof electric control system
- Extended platform
- Hydraulic system import from Italy
- Rubber solid tires

Model	SE-A50S	SE-A80S	SE-A95S	SE-A110S	SE-A130S	SE-A140S
Working height max H1	5	8	9.45	11	13	14
Platform height max H2	3	6	7.45	9	11	12
Lifting Capacity Kg	450	450	450	450	450	450
Platform Size (mm)	1300*700	1850*880	1800*1000	1800*1000	2100*1150	2450*1350
Stowed Size (mm) L*W*H	1350*940*800	2260*1150*1260	2260*1300*1650	2260*1300*1800	2500*1400*1800	3030*1600*1900
Raised Time (s)	30	54	72	80	88	90
Traction Speed (m/s)	0-16.7	0-16.8	0-16.8	0-16.8	0-16.8	0-16.8
Power Source	DC-24V	DC-24V	DC-24V	DC-24V	DC-24V	DC-24V
Lifting Motor Power (Kw)	2.2	2.2	2.2	2.2	2.2	2.2
Driving Motor Power (Kw)	0.75	0.75	0.75	0.75	0.75	0.75
Weight (Kg)	540	740	950	1260	1480	2000

Model	SE-A160S	SE-A180S	SE-A80H	SE-A110H	SE-A140H
Working height max H1	16	18	8	11	14
Platform height max H2	14	16	6	9	12
Lifting Capacity Kg	450	300	1000	1000	1000
Platform Size (mm)	2450*1350	2700*1500	1800*1000	1800*1250	2450*1350
Stowed Size (mm) L*W*H	3100*1600*2100	3370*1750*2100	1850*1240*1110	1850*1490*1650	2500*1590*1850
Raised Time (s)	120	130	80	108	128
Traction Speed (m/s)	0-16.8	0-16.8	0-16.8	0-16.8	0-16.8
Power Source	DC-24V	DC-24V	DC-24V	DC-24V	DC-24V
Lifting Motor Power (Kw)	2.2*2	2.2*2	2.2*2	2.2*2	2.2*2
Driving Motor Power (Kw)	1.2	1.2	1.2	1.2	1.2
Weight (Kg)	2180	2900	960	1850	2260

Model	SE-M50S	SE-M80S	SE-M95S	SE-M110S	SE-M130S	SE-M140S
Working height max H1	5	8	9.45	11	13	14
Platform height max H2	3	6	7.45	9	11	12
Lifting Capacity Kg	450	450	450	450	450	450
Platform Size (mm)	1300*700	1850*880	1800*1000	1800*1000	2100*1150	2450*1350
Stowed Size (mm) L*W*H	1350*940*800	2160*1300*1650	2160*1300*1800	2160*1300*1800	2400*1400*1800	2680*1600*1900
Raised Time (s)	30	54	72	80	88	90
Power (Kw)	0.75	1.1	1.5	1.5	2.2	3
Power Voltage	AC220V/380V	AC220V/380V	AC220V/380V	AC220V/380V	AC220V/380V	AC220V/380V
Weight	450	650	1100	1260	1380	1850
Tires	Ø250 Solid Tires	Ø250 Solid Tires	Ø400-8 Pneumatic Tires	Ø400-8 Pneumatic Tires	Ø500-8 Pneumatic Tires	Ø500-8 Pneumatic Tires

Model	SE-M160S	SE-M180S	SE-M80H	SE-M110H	SE-M140H
Working height max H1	16	18	8	11	14
Platform height max H2	14	16	6	9	12
Lifting Capacity Kg	450	300	1000	1000	1000
Platform Size (mm)	2450*1350	2700*1500	1800*1000	1800*1250	2450*1350
Stowed Size (mm) L*W*H	2700*1600*2100	3100*1750*2100	1850*1240*1110	1850*1490*1650	2500*1590*1850
Raised Time (s)	120	130	80	108	128
Power (Kw)	3	3	2.2	3	3
Power Voltage	AC220V/380V	AC220V/380V	AC220V/380V	AC220V/380V	AC220V/380V
Weight	2150	2680	950	1680	2100
Tires	Ø500-8 Pneumatic Tires	Ø500-8 Pneumatic Tires	Ø500-8 Pneumatic Tires	Ø500-8 Pneumatic Tires	Ø500-8 Pneumatic Tires





Standard Features

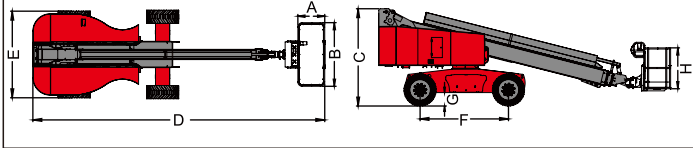
- Self-leveling platform
- Hydraulic rotation platform
- Hall effect fully propotional controls
- Driving confirm
- AC wiring to platform
- Horn
- Hour meter
- Tilt alarm
- Positive traction drive
- Dual speed motor
- Emergency pump
- CAN intelligent control
- Overload limited

Option Features

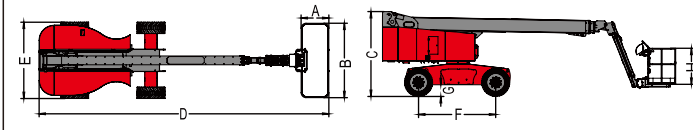
- 2.4m platform
- Swing axis
- Platform swing gate
- Platform alternate leverage
- Welder connecting packages
- Welder wire connecting to the platform
- Air line to the platform
- Hydraulic oil cooler
- Hostile environment packages
- Anti-crash air packages
- Tool tray
- Alarm packages
- Platform work lights
- Dual battery
- Traction packages
- AC power source

Model	TB 200	TB 215J
Working height max H1	20	21.5
Working Platform Height Max	18	19.5
Lifting Capacity Max	250 Kg	250 Kg
Total Weight (2wd)	12T	13T
Total Weight (4wd)	12.5T	13.5T
Length-Stowed	8.5 m	8.5 m
Height-Stowed	2.75 m	
Width-Stowed	2.5 m	
Wheelbase	2.5 m	
Drive Speed, Stowed	2.5 m	
Drive Speed, Extended	6.1 Km/h (4WD 4.8 Km/h)	
Gradeability (2wd/4wd)	30% / 45%	
Tire	365/14D-20;rubber solid tire	
Power Producer	Diesel Motor	
Control Mode	Electro Hydraulic Propotional Control	
Turnable Rotation	360°	
Platform Rotation	180°	
Jib Rotation	130° (+75° / 55°)	
Platform Size	1.8 m x 0.76 m x 1.1 m ( L x W x H )	
Driving Wheels Number	2/4	
Steering Wheels Number	2/4	
System Voltage	DC24V	

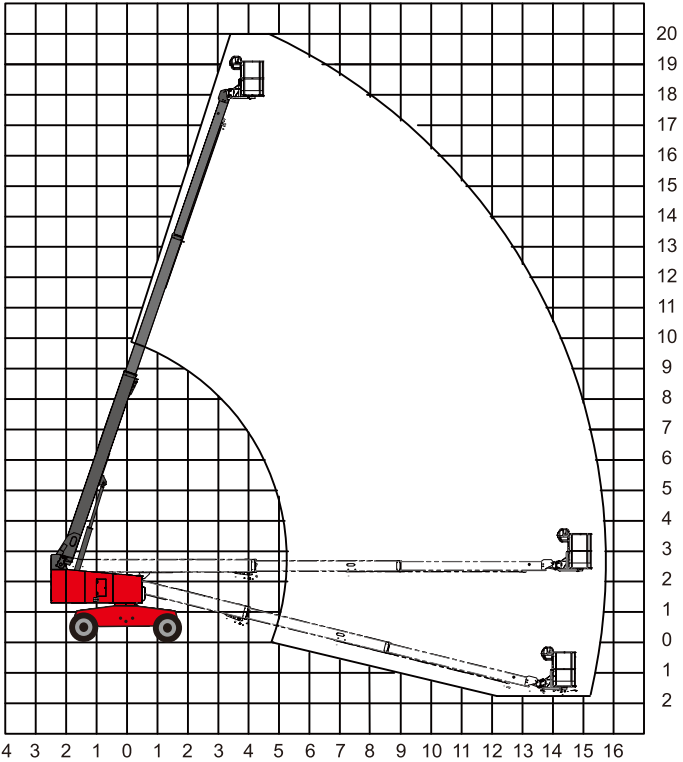
TB200 Collecting Chart



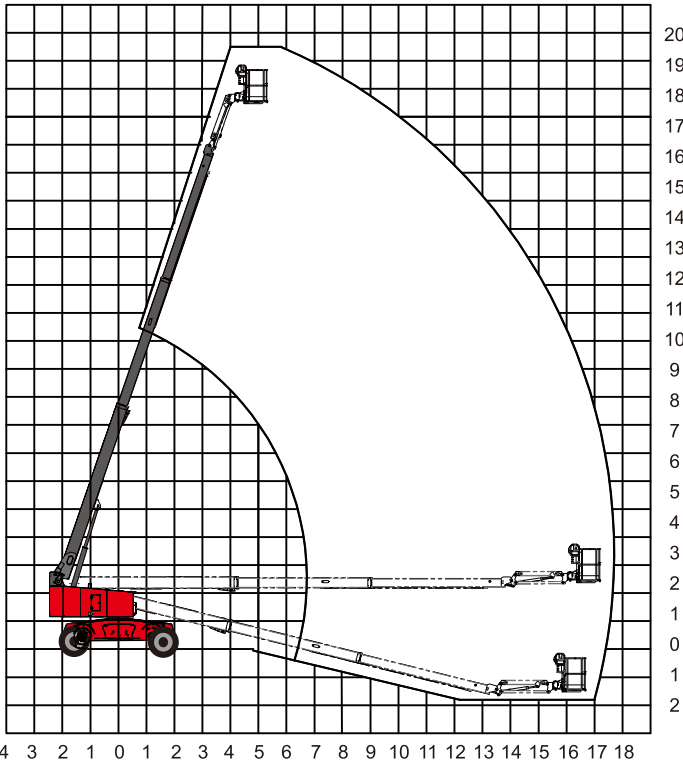
TB215J Collecting Chart



TB200 Working Range



TB215J Working Range





Standard Features

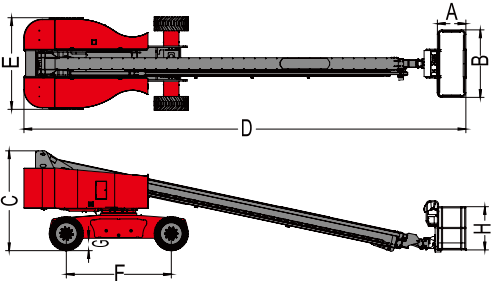
- Self-leveling platform
- Hydraulic rotation platform
- Hall effect fully proportional controls
- Driving confirm
- AC wiring to platform
- Horn
- Hour meter
- Tilt alarm
- Positive traction drive
- Dual speed motor
- Emergency pump
- CAN intelligent control
- Overload limited

Option Features

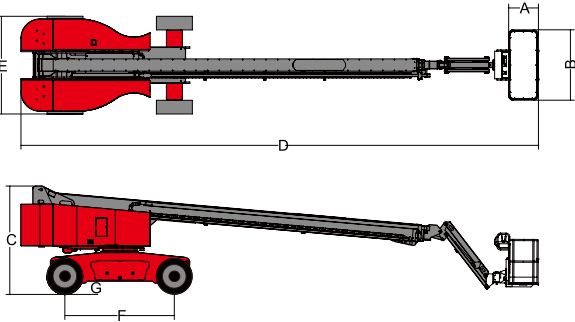
- 2.4m platform
- Swing axis
- Platform swing gate
- Platform alternate leverage
- Welder connecting packages
- Welder wire connecting to the platform
- Air line to the platform
- Hydraulic oil cooler
- Hostile environment packages
- Anti-crash air packages
- Tool tray
- Alarm packages
- Platform work lights
- Dual battery
- Traction packages
- AC power source

Model	TB 270	TB 285J
Working height max H1	27 m	28.5 m
Working Platform Height Max	25 m	26.5 m
Lifting Capacity Max	250 Kg	250 Kg
Total Weight (2wd)	13.86 T	15.5 T
Total Weight (4wd)	14.5 T	13.5T
Length-Stowed	11.8 m	12.5 m
Height-Stowed	2.75 m	
Width-Stowed	2.5 m	
Wheelbase	2.8 m	
Drive Speed, Stowed	5.6 Km/h	
Drive Speed, Extended	1.1 Km/h	
Gradeability (2wd/4wd)	30% / 45%	
Tire	365/ 14D-20 ; Rubber Solid Tire	
Power Producer	Diesel Motor	
Control Mode	Electro Hydraulic Propotional Control	
Turnable Rotation	360°	
Platform Rotation	180°	
Jib Rotation	130° (+75° / 55°)	
Platform Size	1.8 m x 0.76 m x 1.1 m ( L x W x H )	
Driving Wheels Number	2/4	
Steering Wheels Number	2/4	
System Voltage	DC24V	

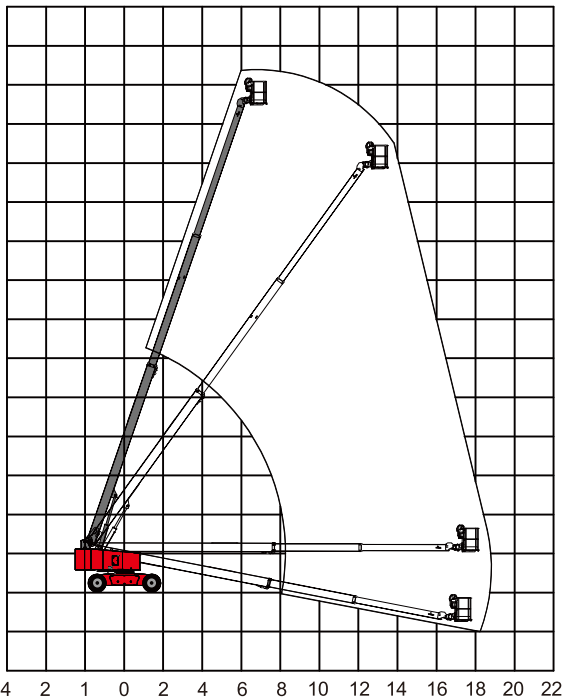
TB270 Collecting Chart



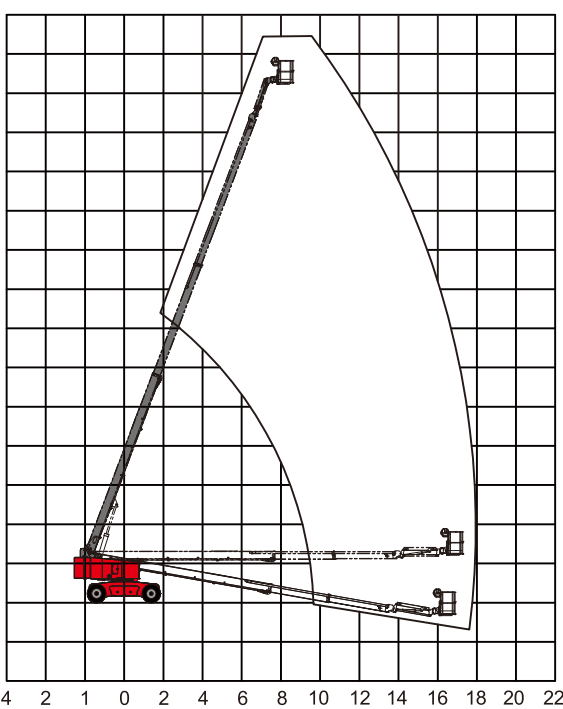
TB275 Collecting Chart



TB270 Working Range



TB285J Working Range





Standard Features

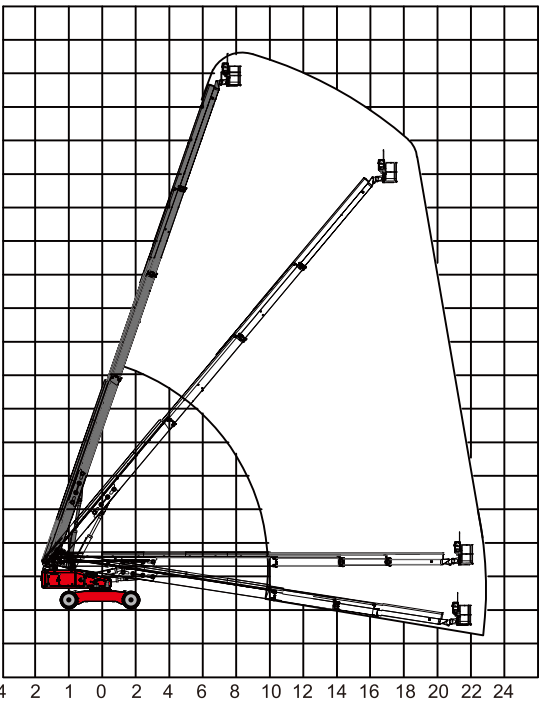
- Self-leveling platform
- Hydraulic rotation platform
- Hall effect fully propotional controls
- Driving confirm
- AC wiring to platform
- Horn
- Hour meter
- Tilt alarm
- Positive traction drive
- Dual speed motor
- Emergency pump
- CAN intelligent control
- Overload limited

Option Features

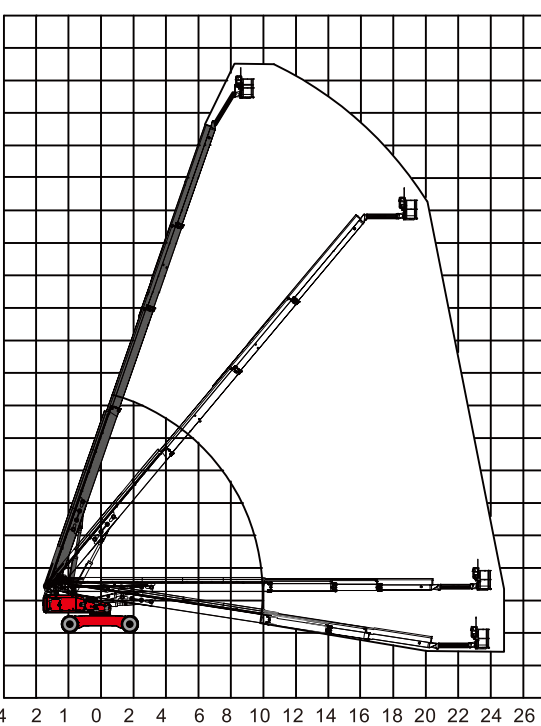
- 2.4m platform
- Swing axis
- Platform swing gate
- Platform alternate leverage
- Welder connecting packages
- Welder wire connecting to the platform
- Air line to the platform
- Hydraulic oil cooler
- Hostile environment packages
- Anti-crash air packages
- Tool tray
- Alarm packages
- Platform work lights
- Dual battery
- Traction packages
- AC power source

Model	TB 330	TB 350J
Working height max H1	33 m	35 m
Working Platform Height Max	31 m	33 m
Lifting Capacity Max	340 Kg	340 Kg
Total Weight (2wd)	18.5 T	19.5 T
Total Weight (4wd)	20.18 T	21.18 T
Length-Stowed	13.2 m	13.5 m
Height-Stowed	3.1 m	
Width-Stowed	2.5 m ( 3.35m )	
Wheelbase	3.65 m	
Drive Speed, Stowed	4.5 Km/h	
Drive Speed, Extended	0.55 Km/h	
Gradeability (2wd/4wd)	25% / 40%	
Tire	385/64-24	
Power Producer	Diesel Motor	
Control Mode	Electro Hydraulic Propotional Control	
Turnable Rotation	360°	
Platform Rotation	180°	
Jib Rotation	130° (+75° / 55°)	
Platform Size	1.8 m x 0.76 m x 1.1 m ( L x W x H )	
Driving Wheels Number	2/4	
Steering Wheels Number	2/4	
System Voltage	DC24V	

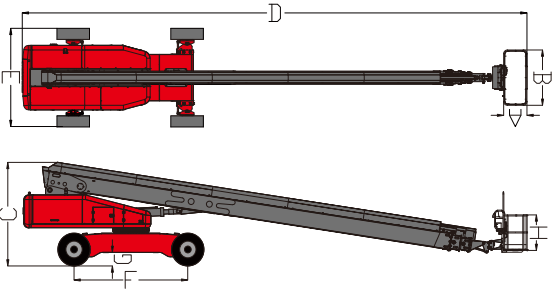
TB330 Working Range



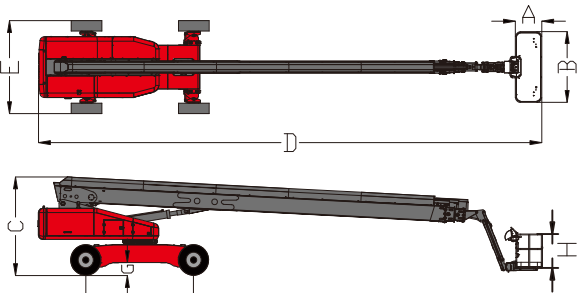
TB350J Working Range



TB330 Collecting Chart



TB330J Collecting Chart





Standard Features

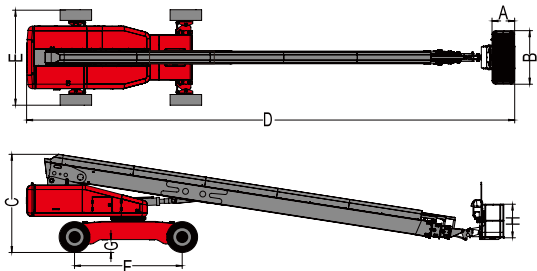
- Self-leveling platform
- Hydraulic rotation platform
- Hall effect fully propotional controls
- Driving confirm
- AC wiring to platform
- Horn
- Hour meter
- Tilt alarm
- Positive traction drive
- Dual speed motor
- Emergency pump
- CAN intelligent control
- Overload limited

Option Features

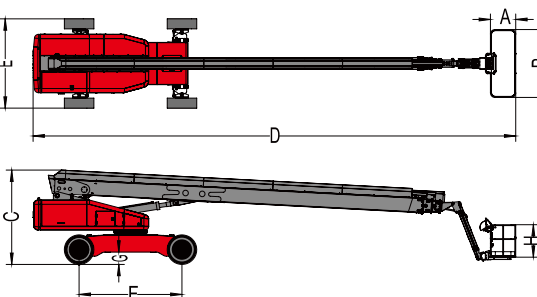
- 2.4m platform
- Swing axis
- Platform swing gate
- Platform alternate leverage
- Welder connecting packages
- Welder wire connecting to the platform
- Air line to the platform
- Hydraulic oil cooler
- Hostile environment packages
- Anti-crash air packages
- Tool tray
- Alarm packages
- Platform work lights
- Dual battery
- Traction packages
- AC power source

Model	TB 390	TB 410J
Working height max H1	39 m	41 m
Working Platform Height Max	37 m	39 m
Lifting Capacity Max	340 Kg	340 Kg
Total Weight (2wd)	25.4 T	26.4 T
Total Weight (4wd)	25.5 T	26.5 T
Length-Stowed	13.5 m	16.6 m
Height-Stowed	3.1 m	
Width-Stowed	2.5 m ( 3.35m )	
Wheelbase	3.65 m	
Drive Speed, Stowed	4.5 Km/h	
Drive Speed, Extended	0.55 Km/h	
Gradeability (2wd/4wd)	25% / 40%	
Tire	445/65D-22.5; rubber solid tire	
Power Producer	Diesel Motor	
Control Mode	Electro Hydraulic Propotional Control	
Turnable Rotation	360°	
Platform Rotation	180°	
Jib Rotation	130° (+75° / 55°)	
Platform Size	1.8 m x 0.76 m x 1.1 m ( L x W x H )	
Driving Wheels Number	2/4	
Steering Wheels Number	2/4	
System Voltage	DC24V	

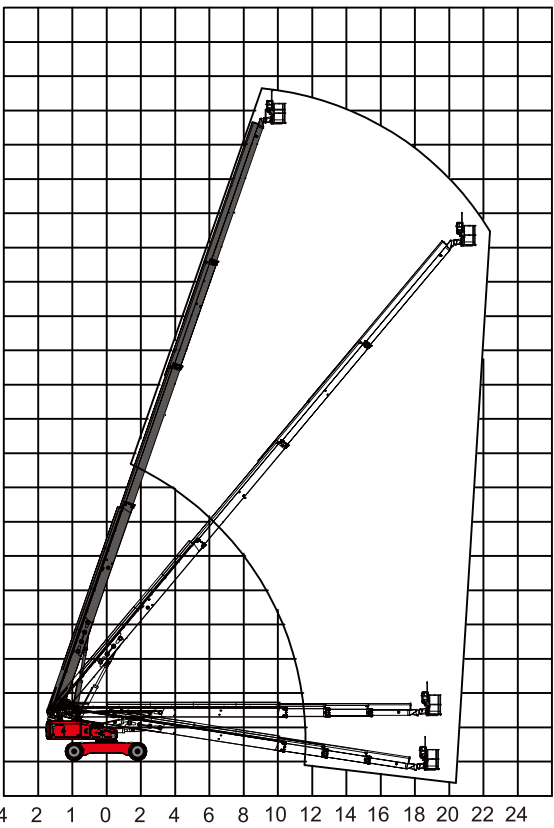
TB390 Collecting Chart



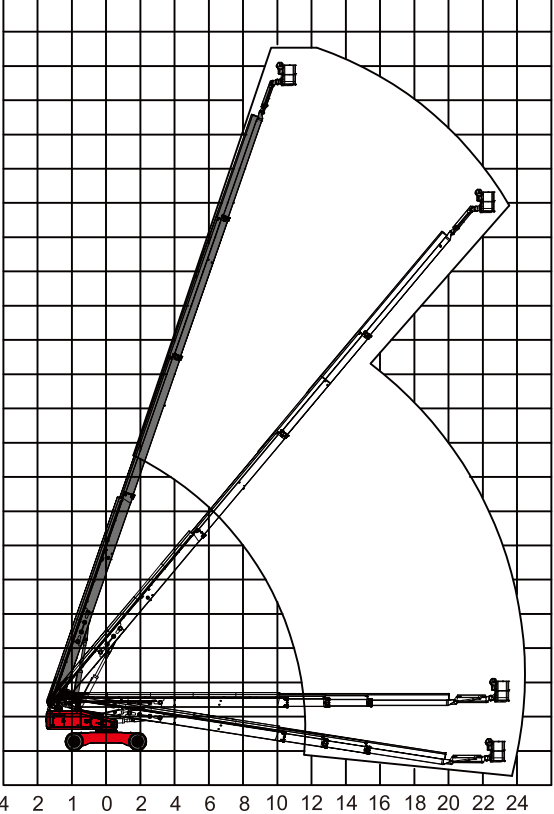
TB410J Collecting Chart



TB390 Working Range



TB410J Working Range





AB-DC SERIES  
SELF-PROPELLED TELESCOPIC BOOMS

AB-DC SERIES



Standard Features

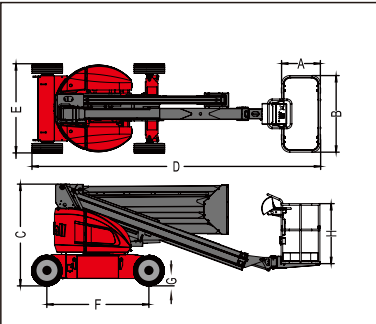
- Self-leveling platform
- Hydraulic rotation platform
- Hall effect fully propotional controls
- Driving confirm
- AC wiring to platform
- Horn
- Hour meter
- Tilt alarm
- Positive traction drive
- Dual speed motor
- Emergency pump
- CAN intelligent control
- Overload limited

Option Features

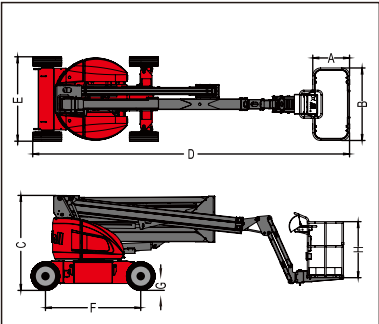
- 2.4m platform
- Platform swing gate
- Platform alternate leverage
- Welder connecting packages
- Welder wire connecting to the platform
- Air line to the platform
- Hydraulic oil cooler
- Hostile environment packages
- Anti-crash air packages
- Tool tray
- Alarm packages
- Platform work lights

Model	AB140/ AB140J
Lift Capacity Max	230 Kg
Working Height Max	14.00 m
Working Platform Height Max	12.00 m
Working Platform Outreach Max	6.60 m
Across Height Max	6.0 m
Turntable Rotation	360 Discrete
Drive Speed, Stowed	3.7 Km/h
Drive Speed, Extended	1.0 Km/h
Platform Rotation	180°
Boom Swing	0/140°
Platform Size A*B*H	1.5m x 1.76m x 1.1m
Leveling Platform	Hydraulic Level
Drive Wheels Number	2
Steering Wheel Number	2
Drive	DC 48V
System Voltage	DC12V
Tire Size	33*12-20
Controls	Electrical Proportional Control
Turning Radius- (Outside)	3.38 m
Turning Radius- (Inside)	2.3 m
Turntable Tailswing	0
Maximum Lateral Force	400N
Tilt Angle Max	3°
Wind Speed Allowed Max	12.5m/s
Gradeability	30%
Height-Stowed (C)	2.00 m
Length-Stowed (E)	5.20 m/ 6.20 m
Width-Stowed (D)	1.75 m
Wheelbase (F)	2.00 m
Ground Clearance (G)	0.14 m
Hydraulic Tank Capacity	35/50L
Total Weight	5.6T/ 5.8T

AB140 Working Range

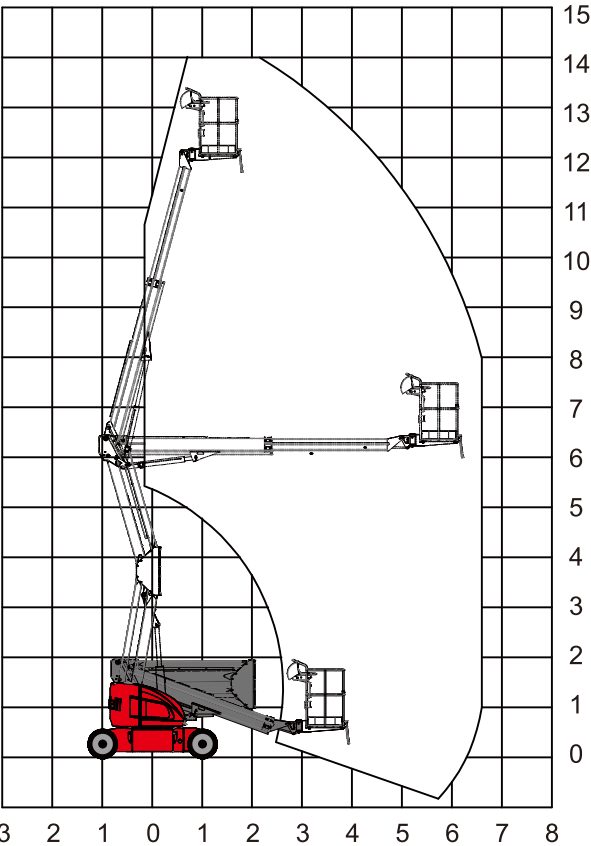


AB140J Working Range

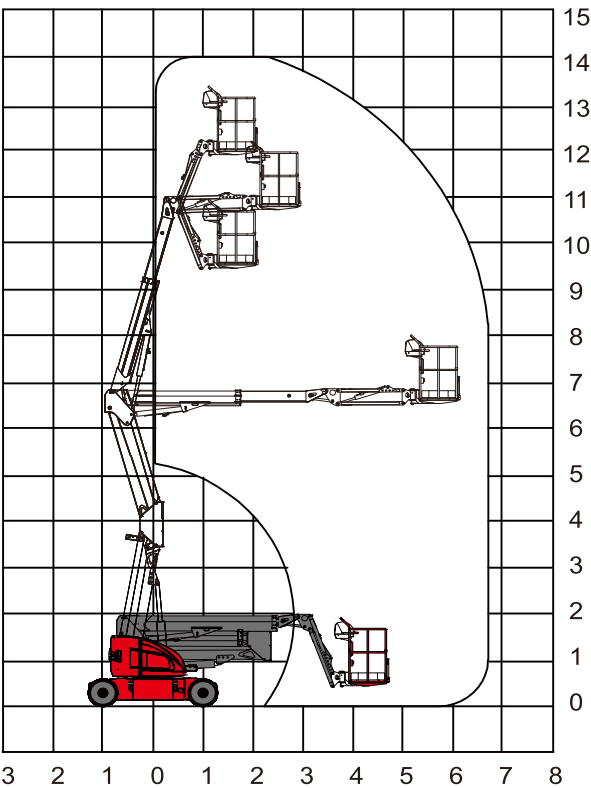


- The metric system height is 2 meters higher than platform height, the imperial height is 6 feet than platform height
- In the rising mode, the machine is designed to operate on a solid flat surface
- Climbing ability is suitable for driving on the slope, the slope classification reference operation manual
- Weight according to the options and standards vary from country to country

AB140 Working Range



AB140J Working Range





AB-DC SERIES  
SELF-PROPELLED ARTICULATING BOOMS

Standard Features

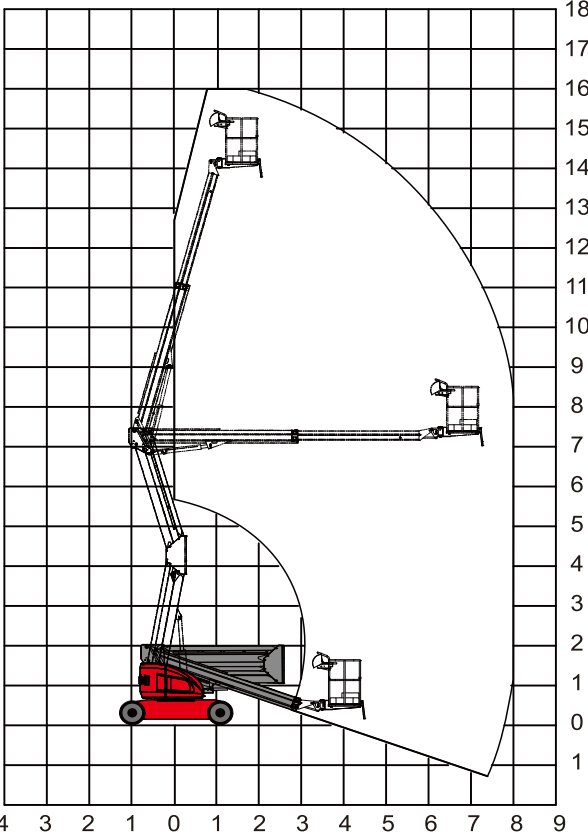
- Self-leveling platform
- Hydraulic rotation platform
- Hall effect fully propotional controls
- Driving confirm
- AC wiring to platform
- Horn
- Hour meter
- Tilt alarm
- Positive traction drive
- Dual speed motor
- Emergency pump
- CAN intelligent control
- Overload limited

Option Features

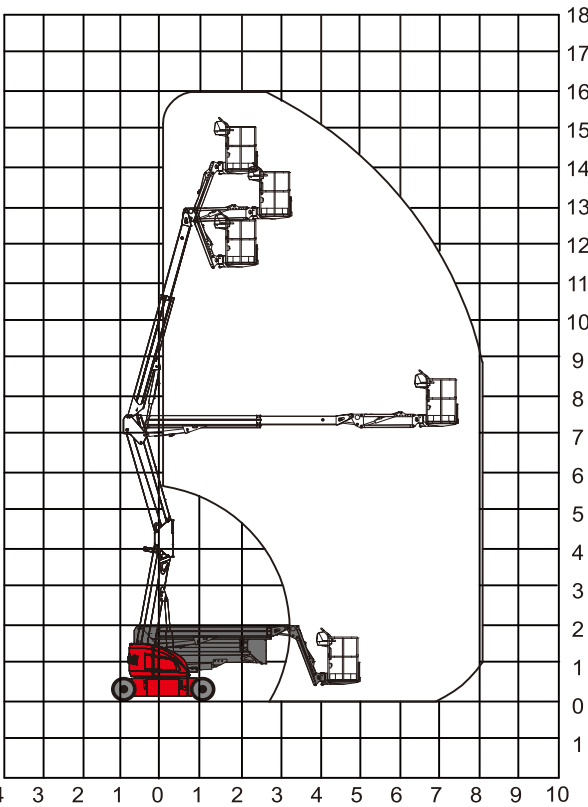
- 2.4m platform
- Swing axis
- Platform swing gate
- Platform alternate leverage
- Welder connecting packages
- Welder wire connecting to the platform
- Air line to the platform
- Hydraulic oil cooler
- Hostile environment packages
- Anti-crash air packages
- Tool tray
- Alarm packages
- Platform work lights

Model	AB160/ AB160J
Lift Capacity Max	230 Kg
Working Height Max	16.00 m
Working Platform Height Max	14.00 m
Working Platform Outreach Max	8.0 m
Across Height Max	7.7 m
Turntable Rotation	360 Discrete
Drive Speed, Stowed	4.8 Km/h
Drive Speed, Extended	1.0 Km/h
Platform Rotation	180°
Boom Swing	0/140°
Platform Size A*B*H	1.5m x 0.76m x 1.1m
Leveling Platform	Hydraulic Level
Drive Wheels Number	2
Steering Wheel Number	2
Drive	DC 48V
System Voltage	DC12V
Tire Size	33*12-20
Controls	Electrical Proportional Control
Turning Radius- (Outside)	3.40 m
Turning Radius- (Inside)	1.1 m
Turntable Tailswing	0
Maximum Lateral Force	400N
Tilt Angle Max	3°
Wind Speed Allowed Max	12.5m/s
Gradeability	30%
Height-Stowed (C)	2.00 m
Length-Stowed (E)	5.70 m/ 6.50 m
Width-Stowed (D)	1.75 m
Wheelbase (F)	2.00 m
Ground Clearance (G)	0.14 m
Hydraulic Tank Capacity	35/50L
Total Weight	6.49T/ 6.5T

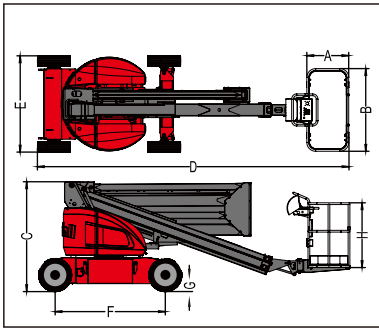
AB160 Working Range



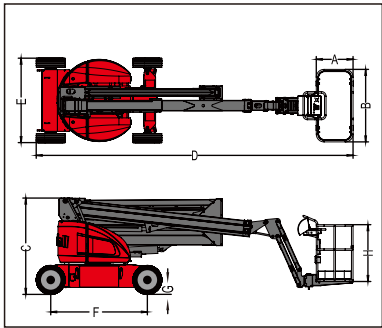
AB160J Working Range



AB160 Working Range



AB160J Working Range



- The metric system height is 2 meters higher than platform height, the imperial height is 6 feet than platform height
- In the rising mode, the machine is designed to operate on a solid flat surface
- Climbing ability is suitable for driving on the slope, the slope classification reference operation manual
- Weight according to the options and standards vary from country to country



AB-DC SERIES  
SELF-PROPELLED ARTICULATING BOOMS

Standard Features

- Self-leveling platform
- Hydraulic rotation platform
- Hall effect fully propotional controls
- Driving confirm
- AC wiring to platform
- Horn
- Hour meter
- Tilt alarm
- Positive traction drive
- Dual speed motor
- Emergency pump
- CAN intelligent control
- Overload limited

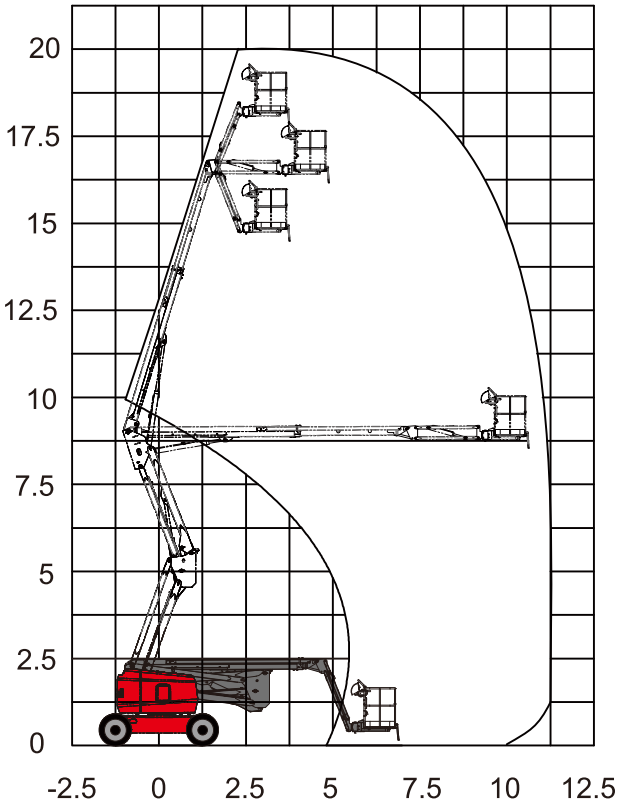
Option Features

- 2.4m platform
- Swing axis
- Platform swing gate
- Platform alternate leverage
- Welder connecting packages
- Welder wire connecting to the platform
- Air line to the platform
- Hydraulic oil cooler
- Hostile environment packages
- Anti-crash air packages
- Tool tray
- Alarm packages
- Platform work lights

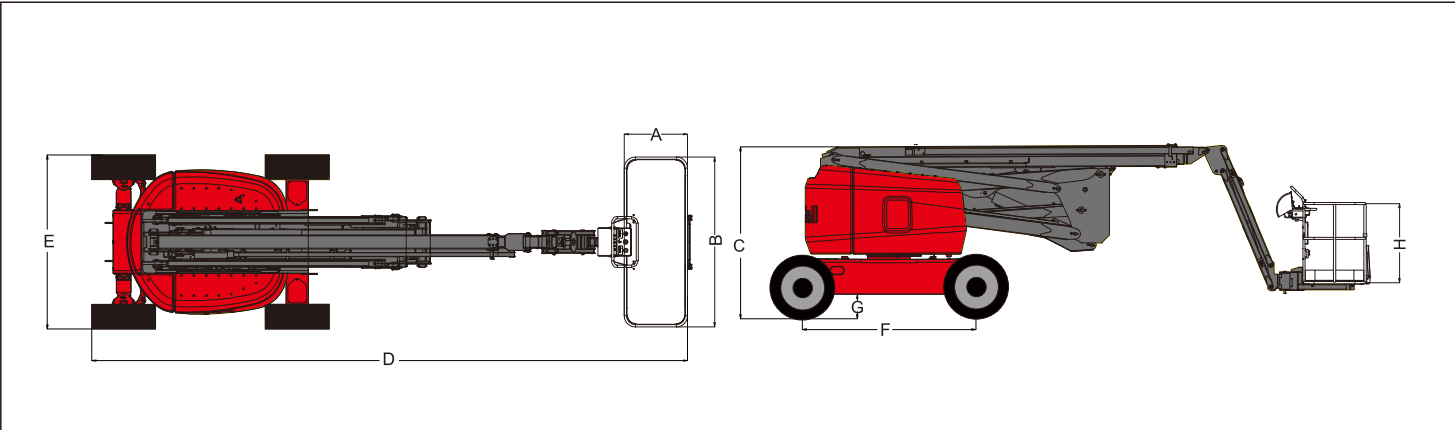


Model	AB200J
Lift Capacity Max	230 Kg
Working Height Max	20.00 m
Working Platform Height Max	18.00 m
Working Platform Outreach Max	12.00 m
Across Height Max	8.00 m
Turntable Rotation	360° Discrete
Drive Speed, Stowed	4.0 Km/h
Drive Speed, Extended	1.0 Km/h
Platform Rotation	180°
Boom Swing	0/140°
Platform Size A*B*H	1.8m x 0.76m x 1.1m
Leveling Platform	Hydraulic Level
Drive Wheels Number	2
Steering Wheel Number	2
Drive	DC 48V
System Voltage	DC12V
Tire Size	355/55D-625
Controls	Electrical Proportional Control
Turning Radius- (Outside)	5.50 m
Turning Radius- (Inside)	2.80 m
Turntable Tailswing	0
Maximum Lateral Force	400N
Tilt Angle Max	3°
Wind Speed Allowed Max	12.5m/s
Gradeability	25%
Height-Stowed (C)	2.60 m
Length-Stowed (D)	8.00 m/ 8.80 m
Width-Stowed (E)	2.50 m
Wheelbase (F)	2.85 m
Ground Clearance (G)	0.30 m
Hydraulic Tank Capacity	110L
Total Weight	9.5T

AB200J Working Range



AB200J Collecting Chart





AB-RT SERIES  
SELF-PROPELLED ARTICULATING BOOMS

Standard Features

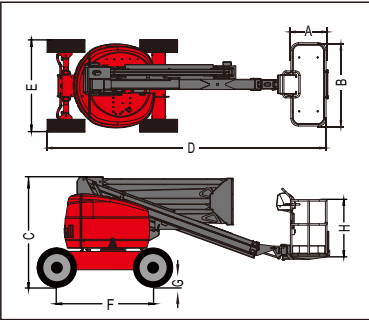
- Self-leveling platform
- Hydraulic rotation platform
- Hall effect fully propotional controls
- Driving confirm
- AC wiring to platform
- Horn
- Hour meter
- Tilt alarm
- Positive traction drive
- Dual speed motor
- Emergency pump
- CAN intelligent control
- Overload limited

Option Features

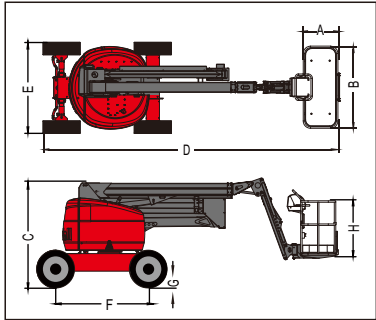
- 2.4m platform
- Swing axis
- Platform swing gate
- Platform alternate leverage
- Welder connecting packages
- Welder wire connecting to the platform
- Air line to the platform
- Hydraulic oil cooler
- Hostile environment packages
- Anti-crash air packages
- Tool tray
- Alarm packages
- Platform work lights

Model	AB140RT/AB140JRT
Lift Capacity Max	230 Kg
Working Height Max	14.00 m
Working Platform Height Max	12.00 m
Working Platform Outreach Max	7.20 m
Across Height Max	6.50 m
Turntable Rotation	360° Discrete
Drive Speed, Stowed	3.0 Km/h (7.0 Km/h 4WD)
Drive Speed, Extended	1.0 Km/h
Platform Rotation	180°
Boom Swing	0/140°
Platform Size A*B*H	1.8m x 0.835m x 1.1m
Leveling Platform	Hydraulic Level
Drive Wheels Number	2 (4 / 4WD)
Steering Wheel Number	2
Drive	Diesel Motor
System Voltage	DC12V
Tire Size	33*12-20
Controls	Electrical Proportional Control
Turning Radius- (Outside)	3.70 m
Turning Radius- (Inside)	2.30 m
Turntable Tailswing	0
Maximum Lateral Force	400N
Tilt Angle Max	3°
Wind Speed Allowed Max	12.5m/s
Gradeability	30% (45% 4WD)
Height-Stowed (C)	2.30 m
Length-Stowed (D)	5.65 m/ 6.20 m
Width-Stowed (E)	2.00 m
Wheelbase (F)	2.00 m
Ground Clearance (G)	0.36 m
Hydraulic Tank Capacity	110L
Fuel Tank Capacity	65L
Total Weight	5.6T/6T

AB140RT Working Range

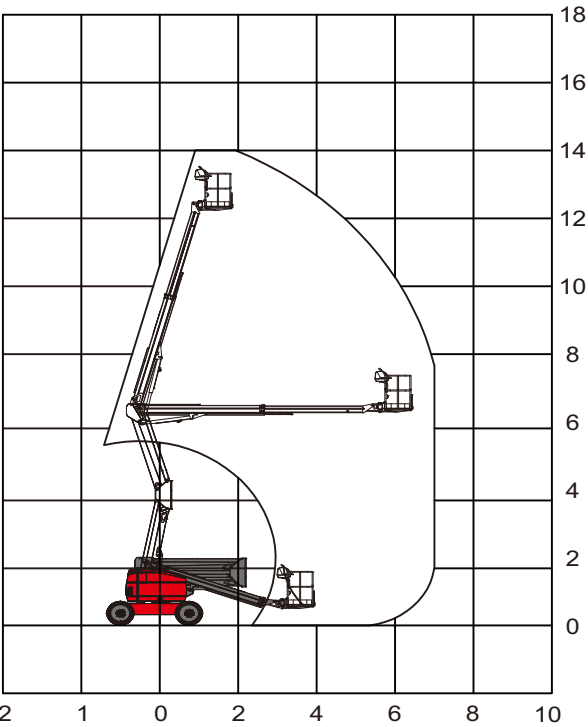


AB140JRT Working Range

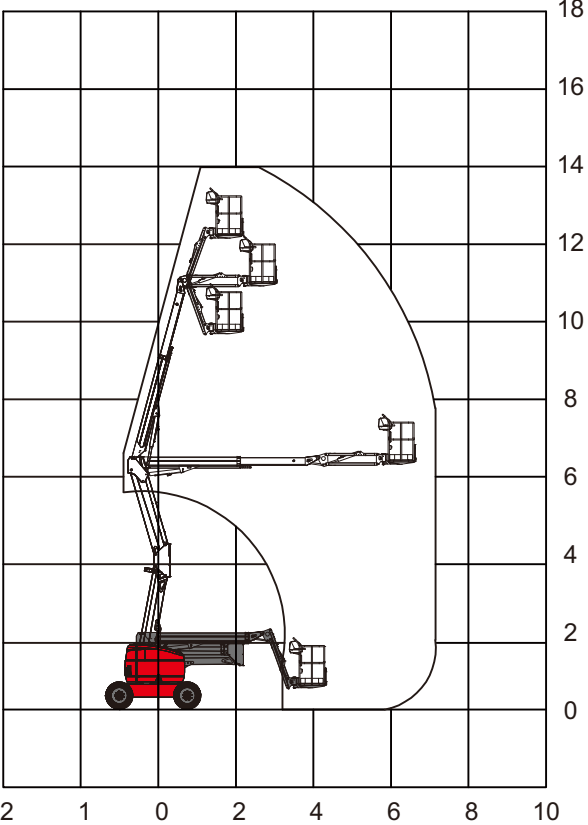


- The metric system height is 2 meters higher than platform height, the imperial height is 6 feet than platform height
- In the rising mode, the machine is designed to operate on a solid flat surface
- Climbing ability is suitable for driving on the slope, the slope classification reference operation manual
- Weight according to the options and standards vary from country to country

AB140RT Working Range



AB140JRT Working Range







Standard Features

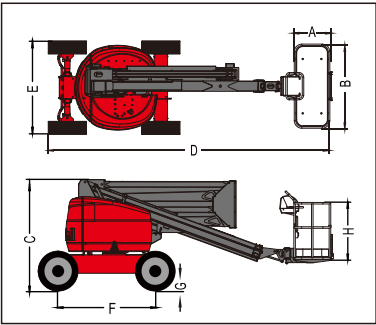
- Self-leveling platform
- Hydraulic rotation platform
- Hall effect fully propotional controls
- Driving confirm
- AC wiring to platform
- Horn
- Hour meter
- Tilt alarm
- Positive traction drive
- Dual speed motor
- Emergency pump
- CAN intelligent control
- Overload limited

Option Features

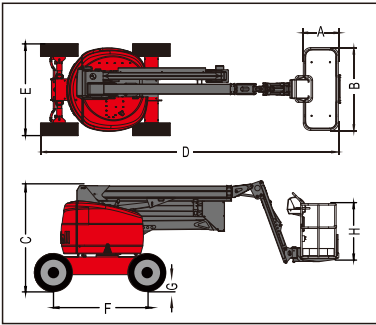
- 2.4m platform
- Swing axis
- Platform swing gate
- Platform alternate leverage
- Welder connecting packages
- Welder wire connecting to the platform
- Air line to the platform
- Hydraulic oil cooler
- Hostile environment packages
- Anti-crash air packages
- Tool tray
- Alarm packages
- Platform work lights

Model	AB160RT/AB160JRT
Lift Capacity Max	230 Kg
Working Height Max	16.00 m
Working Platform Height Max	14.00 m
Working Platform Outreach Max	7.70 m
Across Height Max	7.40 m
Turntable Rotation	360° Discrete
Drive Speed, Stowed	4.9 Km/h (7.0 Km/h 4WD)
Drive Speed, Extended	1.0 Km/h
Platform Rotation	180°
Boom Swing	0/140°
Platform Size A*B*H	1.8m x 0.76m x 1.1m
Leveling Platform	Hydraulic Level
Drive Wheels Number	2 (4 / 4WD)
Steering Wheel Number	2
Drive	Diesel Motor
System Voltage	DC12V
Tire Size	33*12-20
Controls	Electrical Proportional Control
Turning Radius- (Outside)	4.00 m
Turning Radius- (Inside)	1.70 m
Turntable Tailswing	0
Maximum Lateral Force	400N
Tilt Angle Max	3°
Wind Speed Allowed Max	12.5m/s
Gradeability	30% (45% 4WD)
Height-Stowed (C)	2.30 m
Length-Stowed (D)	6.0 m/ 6.50 m
Width-Stowed (E)	2.00 m
Wheelbase (F)	2.00 m
Ground Clearance (G)	0.36 m
Hydraulic Tank Capacity	110L
Fuel Tank Capacity	65L
Total Weight	6.1T/6.3T

AB160RT Working Range

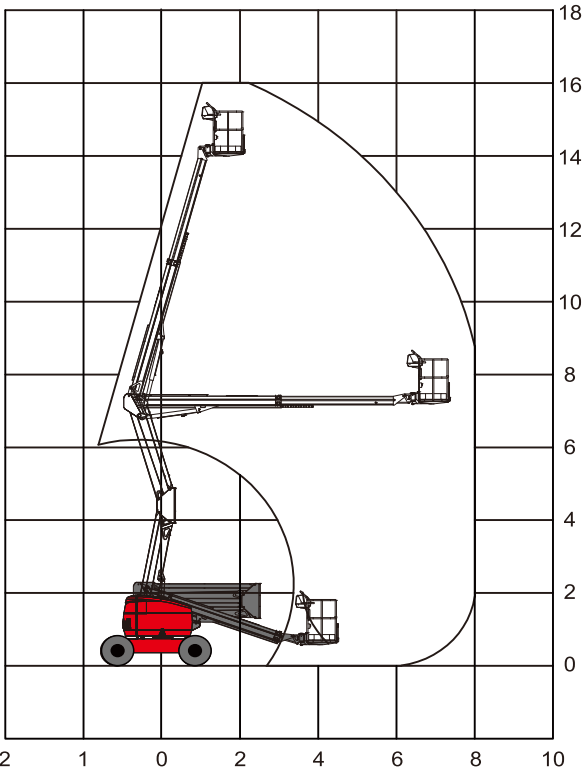


AB160JRT Working Range

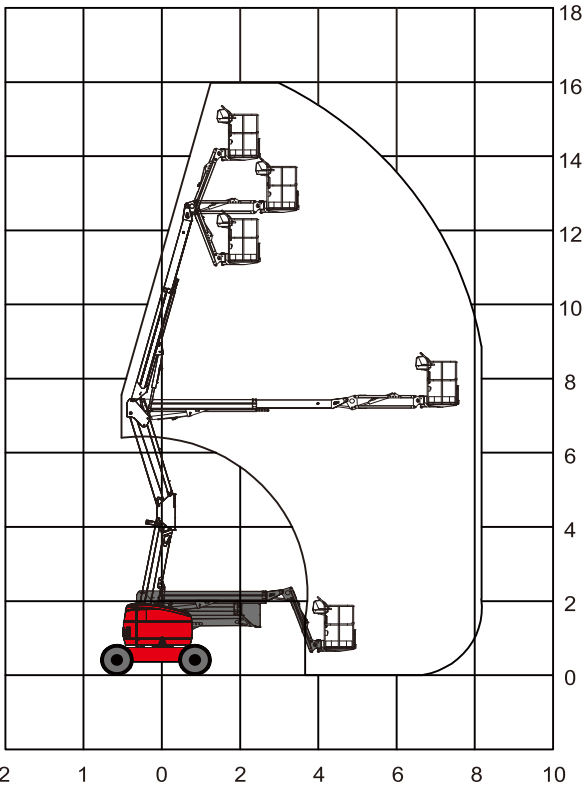


- The metric system height is 2 meters higher than platform height, the imperial height is 6 feet than platform height
- In the rising mode, the machine is designed to operate on a solid flat surface
- Climbing ability is suitable for driving on the slope, the slope classification reference operation manual
- Weight according to the options and standards vary from country to country

AB160RT Working Range



AB160JRT Working Range





AB-RT SERIES  
SELF-PROPELLED ARTICULATING BOOMS



Standard Features

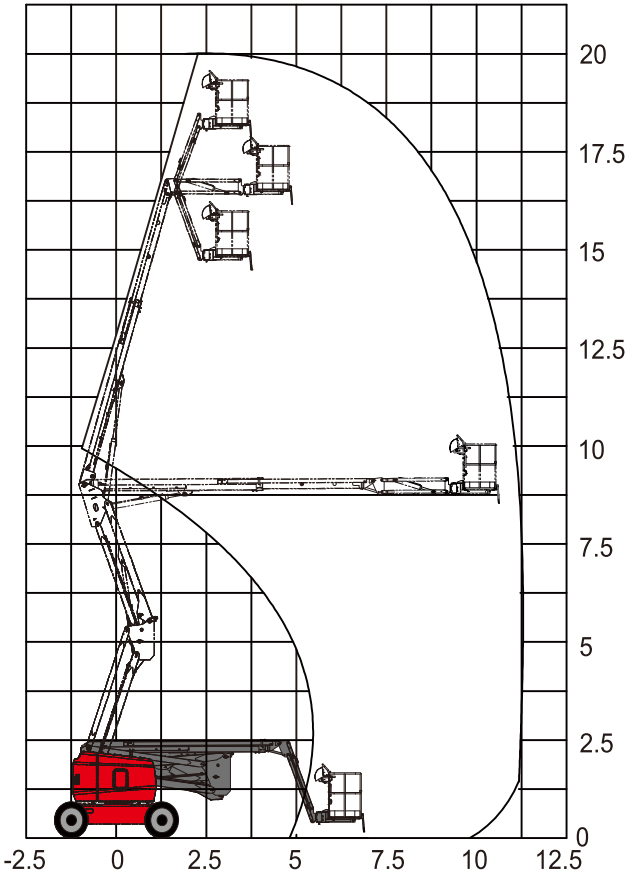
- Self-leveling platform
- Hydraulic rotation platform
- Hall effect fully propotional controls
- Driving confirm
- AC wiring to platform
- Horn
- Hour meter
- Tilt alarm
- Positive traction drive
- Dual speed motor
- Emergency pump
- CAN intelligent control
- Overload limited

Option Features

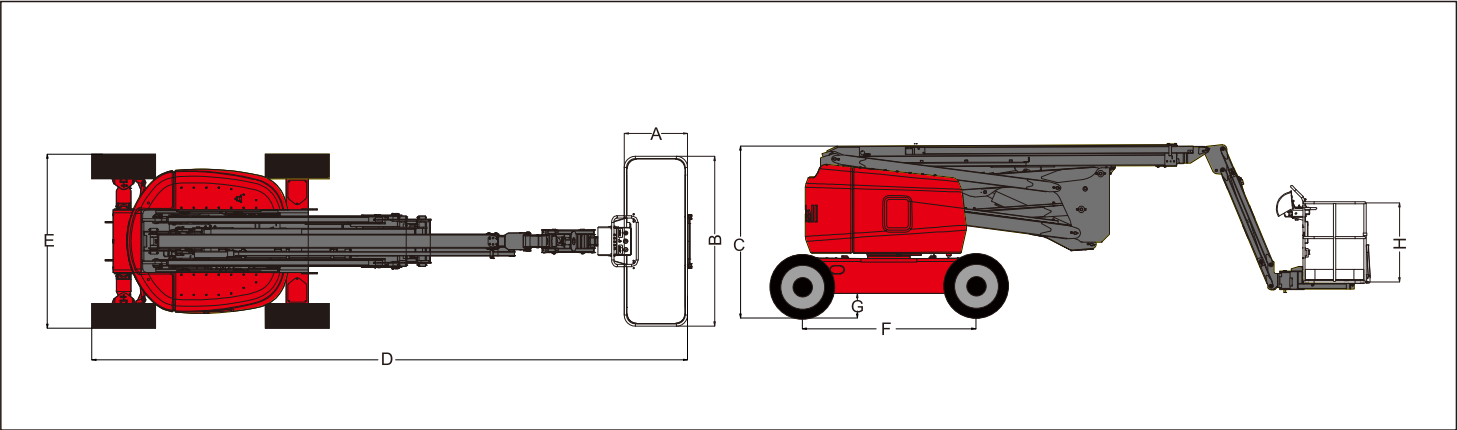
- 2.4m platform
- Swing axis
- Platform swing gate
- Platform alternate leverage
- Welder connecting packages
- Welder wire connecting to the platform
- Air line to the platform
- Hydraulic oil cooler
- Hostile environment packages
- Anti-crash air packages
- Tool tray
- Alarm packages
- Platform work lights

Model	AB200JRT
Lift Capacity Max	230 Kg
Working Height Max	20.00 m
Working Platform Height Max	18.00 m
Working Platform Outreach Max	11.10 m
Across Height Max	8.90 m
Turntable Rotation	360° Successive
Drive Speed, Stowed	4.8 Km/h
Drive Speed, Extended	1.0 Km/h
Platform Rotation	180°
Boom Swing	0/137°
Platform Size A*B*H	2.4m x 0.9m x 1.1m
Leveling Platform	Hydraulic Level
Drive Wheels Number	2 (4 / 4WD)
Steering Wheel Number	2
Drive	Diesel Motor
System Voltage	DC12V
Tire Size	355/55D-625
Controls	Electrical Proportional Control
Turning Radius- (Outside)	5.40 m
Turning Radius- (Inside)	2.20 m
Turntable Tailswing	0
Maximum Lateral Force	400N
Tilt Angle Max	3°
Wind Speed Allowed Max	12.5m/s
Gradeability	30% (45% 4WD)
Height-Stowed (C)	2.50 m
Length-Stowed (D)	8.60 m
Width-Stowed (E)	2.50 m
Wheelbase (F)	2.80 m
Ground Clearance (G)	0.35 m
Hydraulic Tank Capacity	170L
Fuel Tank Capacity	85L
Total Weight	11.8 T

AB200JRT Working Range



AB200J Collecting Chart





Flexible and accurate positioning

Shigemitsu S Series turntable 360 degrees rotation, lifting arm can extend a maximum of 14.5 meters, the platform can be rotated 180 degrees, work location and perfect service, easily transferred across the barrier.

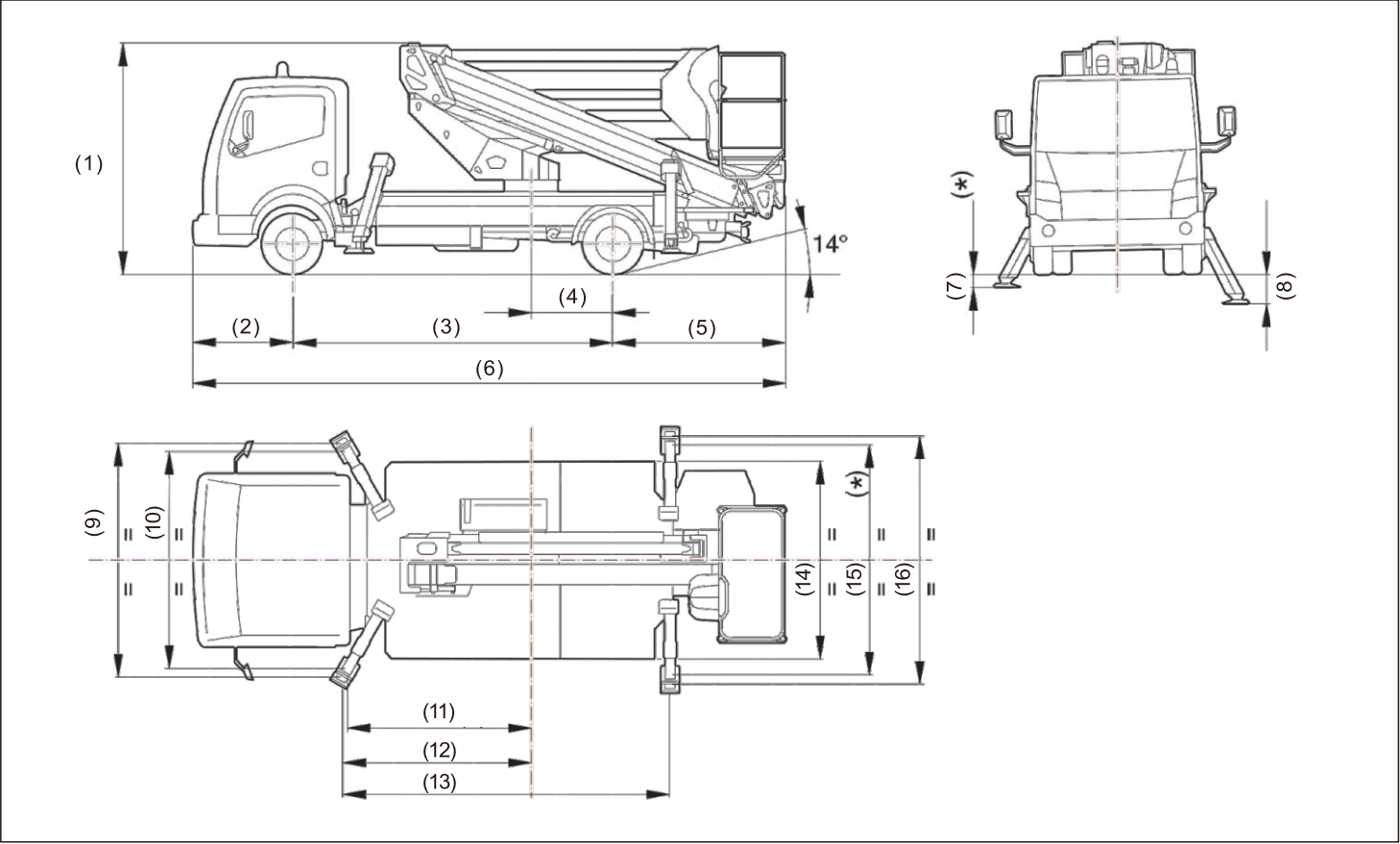
Powerful extension capability

Shigemitsu series provide users with powerful extension capability, and its extended range can be up to 14.5 meters, providing convenience for a variety of environmental work.

Model	TM1470C	TM1770C	TM2110C	TM2512C	TM2815C
Working Height (m)	14.35	17.20	20.00	24.80	27.80
Platform Height (m)	12.35	15.20	18.00	22.80	25.80
Outreach Max (m)	7.00	7.40	10.00	12.50	14.50
Turntable Rotation°	360	360	360	360	360
Lift Capacity (Kg)	200	220	220	220	220
Platform Rotation°	180	180	180	180	180
Platform Size (mm)	1500*800*1150	1500*800*1150	1500*800*1150	1780*730*1120	1700*700*1100
Height-Stowed (mm) (1)	2700	2400	2400	3000	2920
Length-Stowed (mm) (6)	6350	5790	5790	8300	6900
Width-Stowed (mm) (9)	2100	2100	2100	2550	2200
Controls	Electrical Proportional Control				
Outriggers Type	Hydraulic				
Articulating Type	Steel Single Quads Type		Steel Dual Quads Type		
Chassis Specification	2T	3.5T	3.5T	6T	6T

Detailed Parameters, Please Consult The Shigemitsu Salles Representatives

TM Working Range







Standard Features

- Incorporate a silent ratchet system
- Transportation wheels
- Roller wheels with brake
- Standard forks
- Telescopic mast design
- Solid Steel base

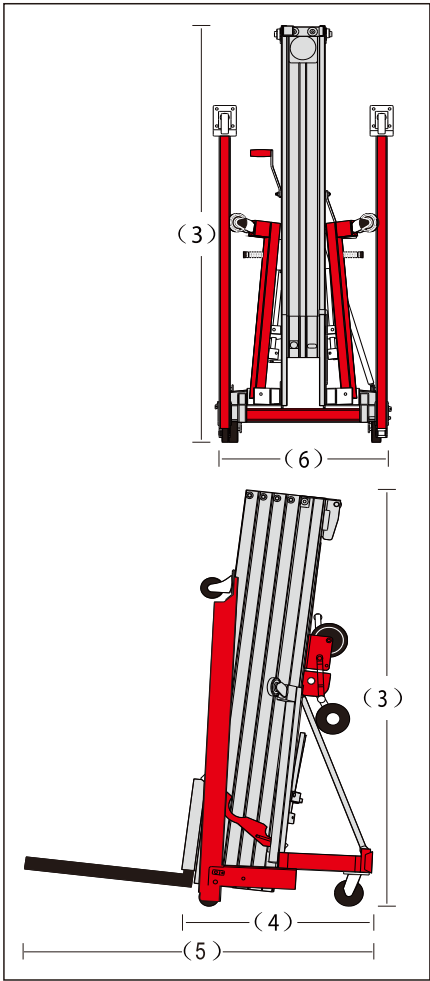
Option Features

- Adjustable Forks
- Flat Forks
- Boom
- Pipe cross Forks
- Load Platform
- Anti-fall function

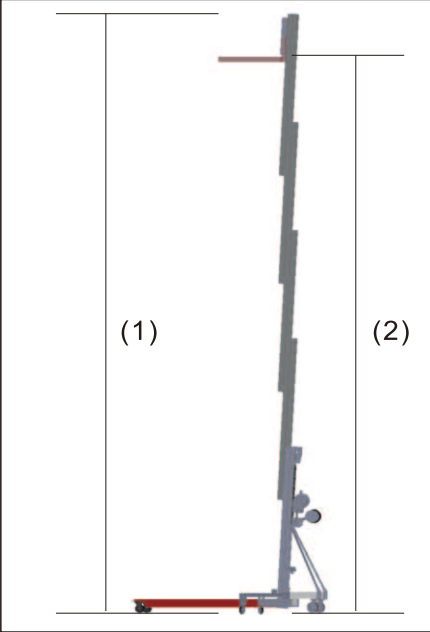
Model	SML-10	SML-15	SML-20	SML-25
Measurements				
Working Height				
(1) Standard Forks-Up	3.48 m	5.00 m	6.45 m	7.95 m
(2) Standard Forks-Down	2.96 m	4.48 m	5.93 m	7.43 m
Adjustable Forks-Up	3.48 m	5.00 m	6.45 m	7.95 m
Adjustable Forks-Down	2.96 m	4.48 m	5.93 m	7.43 m
Flat Forks	2.96 m	4.48 m	-	-
Boom***	3.28 m	4.76 m	6.25 m	7.42 m
Load Platform**-Fork Up	3.49 m	4.98 m	6.46 m	7.94 m
Load Platform**-Fork Down	2.97 m	4.46 m	5.94 m	7.42 m
(3) Height-Stowed	1.98 m	1.98 m	1.98 m	1.98 m
(4) Length-Stowed	0.75 m	0.75 m	0.75 m	0.83 m
(5) Length-Operating	2.2 m	2.2 m	2.2 m	2.2 m
(6) Width-Stowed*	0.79 m	0.79 m	0.79 m	0.79 m
Width-Straddle Base*				
Minimum	0.80 m	0.80 m	-	-
Maximum	1.47 m	1.47 m	-	-
Maximum Inside	1.27 m	1.27 m	-	-
(7) Ground Clearance-Center	0.05 m	0.05 m	0.05 m	0.05 m
Load Height Minimum	0.15 m	0.15 m	0.15 m	0.15 m
Productivity				
Load Capacity				
46 cm Load Center	454 Kg	363 Kg	363 Kg	295 Kg
61 cm Load Center	454 Kg	363 Kg	272 Kg	204 Kg
1.07 m Load Center	181 Kg	227 Kg	159 Kg	113 Kg
Power				
Power	Single Speed Winch			
Weight				
Standard	163 Kg	183 Kg	203 Kg	224 Kg

\* Outside Dimensions  
\*\* For use with standard and adjustable forks only  
\*\*\* Measured from ground to bottom of shackle

ALP Working Range



ALP Working Range







Standard Features

- Alumunium platform basket
- Polyurethane non-mark tires
- Leverage ro-ro device
- Lifting ears
- Two controls of the platform and base
- Lower beeper warning
- Tilting device only SAP40
- Lowering switch
- Outrigger storage frame

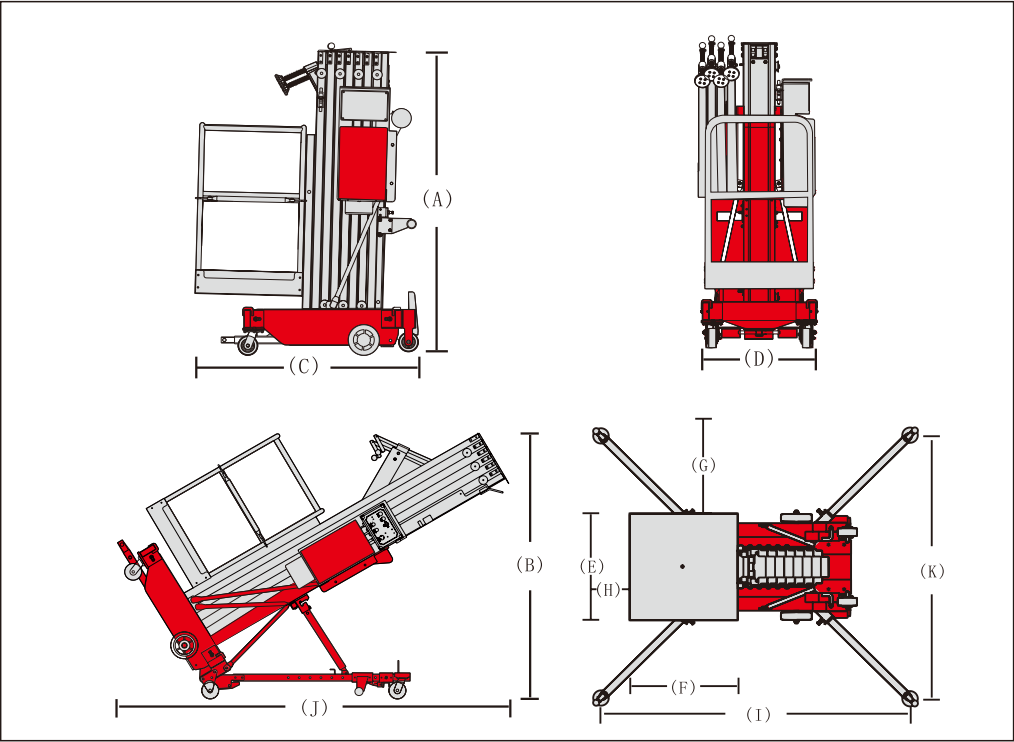
Option Features

- Door type standard/narrow/wide platform
- Fiber glass platform
- Goods collection platform
- Narrow/ Rough ground chassis
- Stair bracket
- Tool box
- Platform positioning laser lights
- Fluorescent tubes box
- Working flashing beacon
- Top limit protection auto-stop device
- Maintenance-free battery
- Equipment protection cover

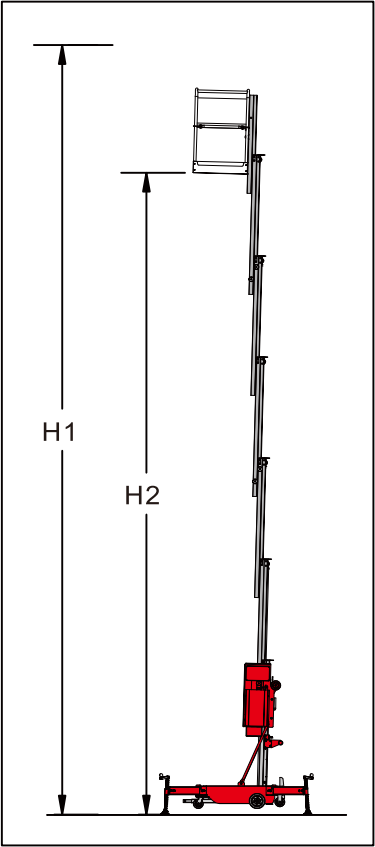
Model	SAP20	SAP26	SAP32	SAP40
Working Height Max.	8.0 m	10.0 m	12.0 m	14.0 m
Platform Height Max.	6.0 m	8.0 m	10.0 m	12.0 m
Lift Capacity	159 Kg	159 Kg	159 Kg	120 Kg
Basket Size (E*F)	0.69 m * 068.m	0.69 m * 0.68 m	0.68 m * 0.68 m	0.69 m * 0.68 m
Width, Stowed (D)	0.74 m	0.74 m	0.74 m	0.74 m
Height, Stowed (A)	1.97 m	1.97 m	1.97 m	2.76 m
Height, Tilted Back (B)	--	--	--	1.98 m
Length, Stowed (C)	1.27 m	1.36 m	1.42 m	1.46 m
Length, Tillted Back (J)	--	--	--	2.87 m
Outrigger Footprint (L*K)	1.77 m * 1.49 m	1.77 m * 1.49 m	1.99 m * 1.72 m	2.27 m * 1.98 m
Wall Access Front/ Side (H/G)	0.18/1.49 m	0.18/0.45 m	0.23/0.55 m	0.42/0.65 m
Power Source (AC/DC)	220V/110V/12V			
Weight (AC/DC)	335 Kg / 405 Kg	355 Kg / 430 Kg	365 Kg / 480 Kg	480 Kg / 535 Kg

- The metric system height is 2 meters higher than platform height, the imperial height is 6 feet than platform height
- In the rising mode, the machine is designed to operate on a solid flat surface
- Climbing ability is suitable for driving on the slope, the slope classification reference operation manual
- Weight according to the options and standards vary from country to country

SAP Collecting Chart



SAP Working Range







Standard Features

- Alumunium platform basket
- Polyurethane non-mark tires
- Leverage ro-ro device
- Lifting ears
- Two controls of the platform and base
- Lower beeper warning
- Tilting device
- Lowering switch
- Outrigger storage frame

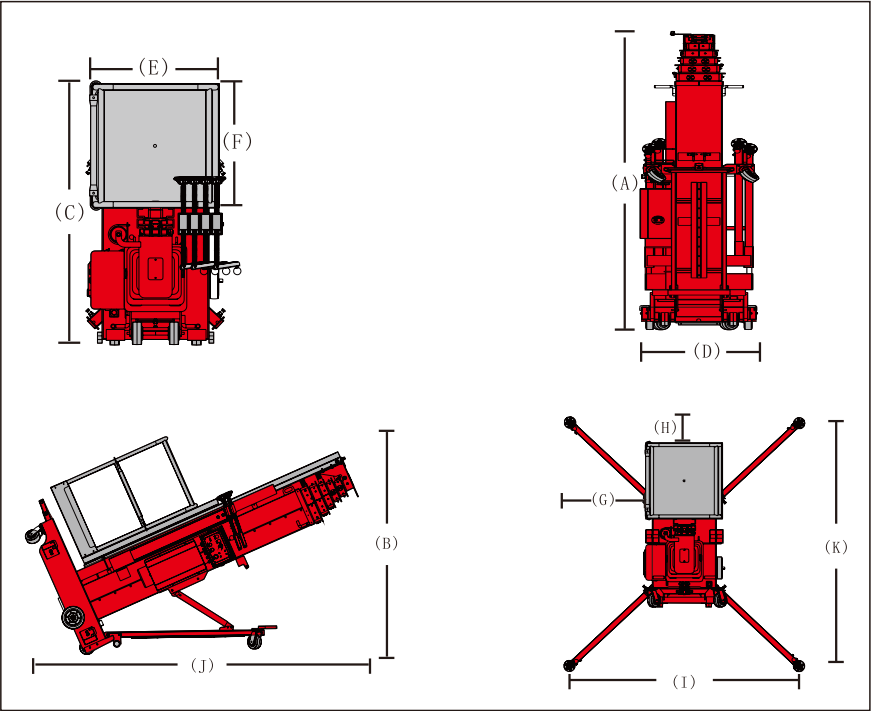
Option Features

- Door type standard/ narrow/ wide platform
- Fiber glass platform
- Goods collection platform
- Narrow/ Rough ground chassis
- Stair bracket
- Tool box
- Platform positioning laser lights
- Fluorescent tubes box
- Working flashing beacon
- Top limit protection auto-stop device
- Maintenance-free battery
- Equipment protection cover

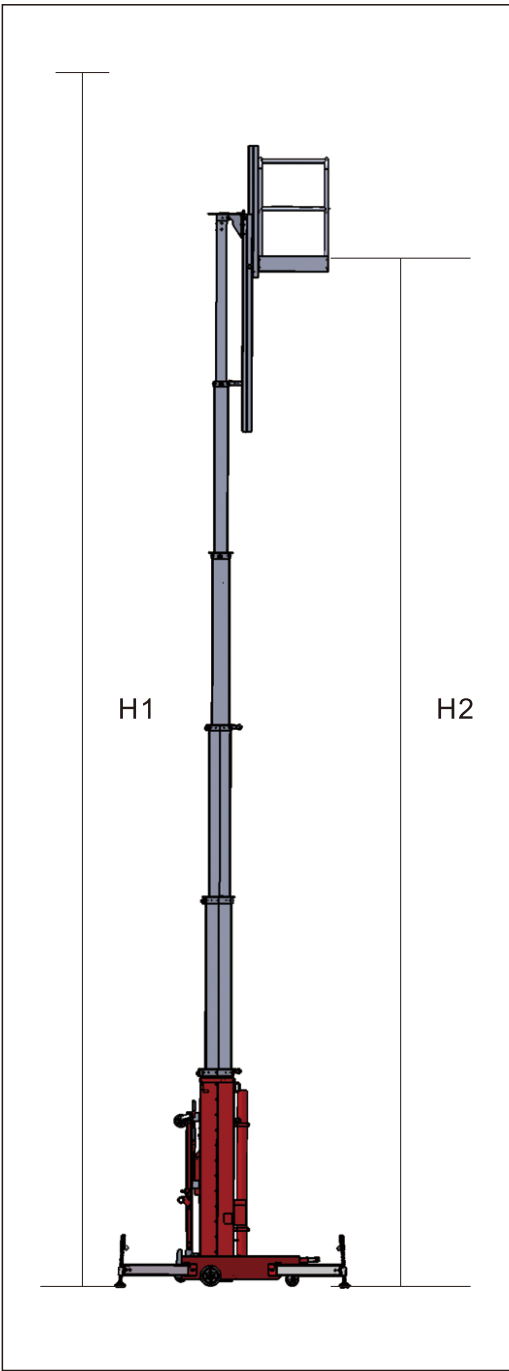
Model	SLP26	SLP32	SLP40
Working Height Max.	10.0 m	12.0 m	14.0 m
Platform Height Max.	8.0 m	10.0 m	12.0 m
Lift Capacity	136 Kg	120 Kg	120 Kg
Basket Size (E*F)	0.68 m * 1.68 m		
Width, Stowed (D)	0.74 m	0.74 m	0.74 m
Height, Stowed (A)	1.98 m	2.63 m	2.94 m
Height, Tilted Back (B)	--	1.98 m	1.98 m
Length, Stowed (C)	1.45 m	1.45 m	1.45 m
Length, Tilted Back (I)	--	2.63 m	2.94 m
Outrigger Footprint (L*K)	1.86 m * 2.0 m	2.13 m * 2.0 m	2.13 m * 2.0 m
Wall Access Front/ Side (H/G)	1.13/0.58 m	0.26/0.71 m	0.26/0.71 m
Power Source (AC/DC)	220V/110V/12V		
Weight (AC/DC)	400 Kg / 540 Kg	500 Kg / 610 Kg	540 Kg / 655 Kg

- The metric system height is 2 meters higher than platform height, the imperial height is 6 feet than platform height
- In the rising mode, the machine is designed to operate on a solid flat surface
- Climbing ability is suitable for driving on the slope, the slope classification reference operation manual
- Weight according to the options and standards vary from country to country

SLP Collecting Chart



SLP Working Range







Standard Features

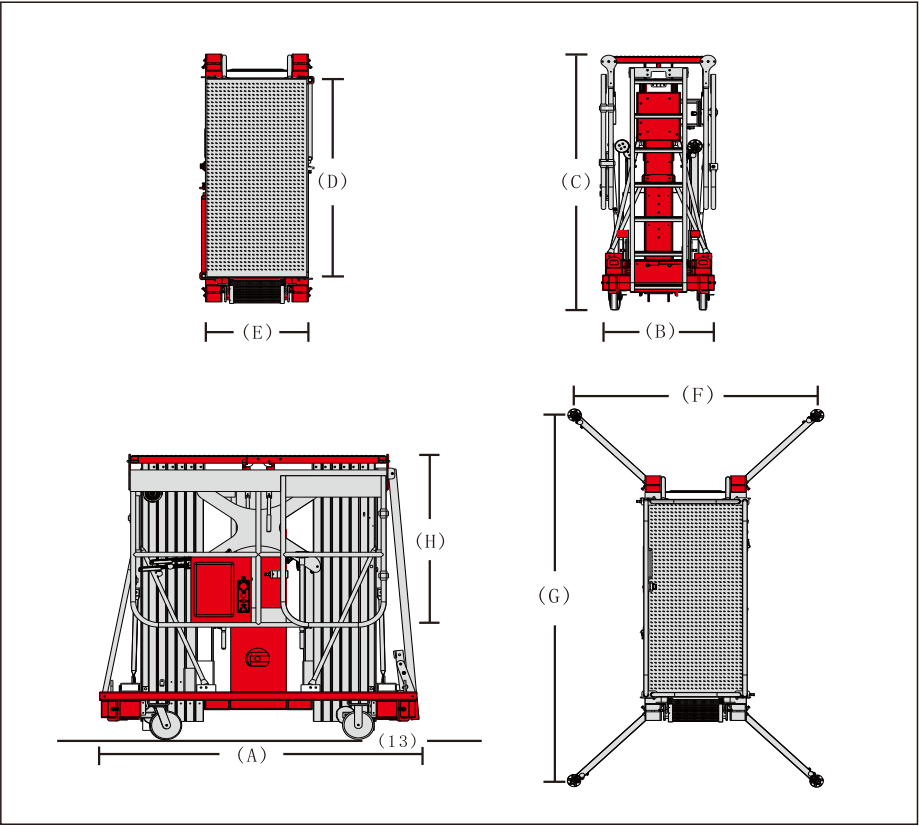
- Alumunium platform basket
- Polyurethane non-mark tires
- Forklift pockets
- Foldable inclined ladder
- Two controls of the platform and base
- Lower beeper warning
- Reversal platform
- Lowering switch
- Outrigger storage frame

Option Features

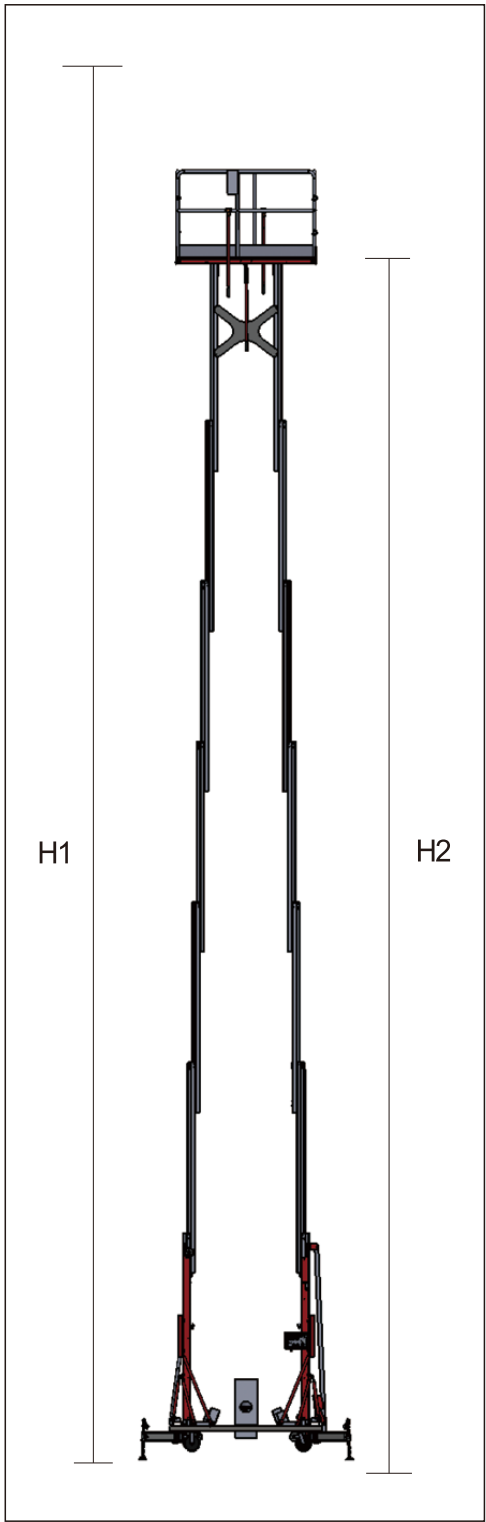
- Door type wide platform
- Fiber glass platform
- Narrow/ Rough ground chassis
- Wide Chassis
- DC power
- Tool box
- Platform positioning laser lights
- Fluorescent tubes box
- Working flashing beacon
- Top limit protection auto-stop device
- Auxiliary drive wheel
- Maintenance-free battery
- Equipment protection cover

Model	DAP-10	DAP-12	DAP-14	DAP-16	DAP-18
Standard Parameter					
Working Height (m)	10	12	14	16	18
Platform Height (m)	8	10	12	14	16
Lift Capacity (Kg)	272	272	200	200	150
Weight (Kg)	800	850	900	1065	1185
Stowed Size (m) (A*B*C)	1.48 x 0.8 x 1.98		1.6 x 0.8 x 1.98	1.75 x 0.81 x 2.36	2 x 0.8 x 2.75
Platform Size (m) (D*E*H)	1.37 x 0.7 x 1.1		1.5 x 0.7 x 1.1	1.46 x 0.6 x 1.1	1.8 x 0.7 x 1.1
Outrigger Footprint (m) (F*G)	1.9 * 2.1		2.5 * 2.1	2.7 * 2.8	2.7 * 2.8
Power Source (AC/DC)	220V/110V/12V				
Option Wide Chassis Parameter					
Stowed Size (m) (A*B*C)	2.02 x 0.8 x 2		2.02 x 0.8 x 2.75	-----	
Platform Size (m) (F*G)	1.63 x 0.8 x 1.1		1.8 x 0.7 x 1.1	-----	
Outrigger Footprint (m) (F*G)	1.8 x 3.0		2.7 x 2.8	-----	
Weight (Kg)	885	935	985	-----	-----
Option Rotate Chassis Parameter					
Stowed Size (m) (A*B*C)	-----				2.7 x 0.85 x 1.98
Platform Size (m) (D*E*H)					1.49 x 0.78 x 1.1
Outrigger Footprint (m) (F*G)					2.98 x 2.81
Weight (Kg)					1540

DAP Collecting Chart



DAP Working Range





SSAP SERIES  
SELF-PROPELLED SINGLE MAST AERIAL PLATFORM

Standard Features

- The working height can reach up to 8m
- The lift capacity can reach to 350 lbs (160kg)
- Standard platform with median sliding rod
- Auxiliary platform lowering system
- The platform entrance height for a minimum of 0.38 meters
- Ground emergency lowering valve
- Proportional raising and driving control
- Diagnosis system
- AC wiring to platform
- Adjustable work tray
- Lowering and tilting alarm
- Turn inter-radius is 0
- Double wheel brake
- Hydraulic brake release
- Pothole guards
- The rear shield mounted with hinge, Conveniently to close to all major electrical and Hydraulic Components
- Transportation fixing hole
- Wide type forklift handling notch
- Non-mark solid tire

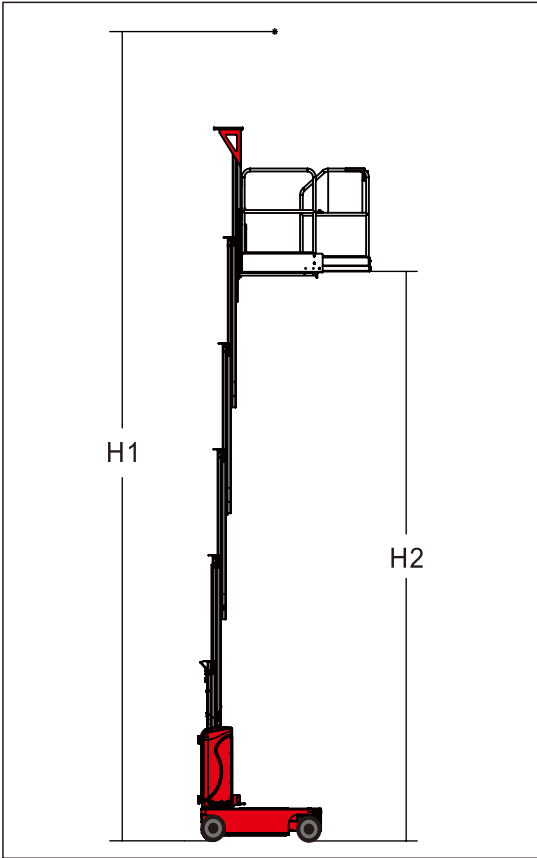
Option Features

- Door type standard/ narrow/ wide platform
- Extendable platform
- Fiber glass platform
- Goods collection platform
- Motion alarm
- Tool box
- Platform positioning laser lights
- Fluorescent tubes box
- Working flashing beacon
- Top limit protection auto-stop device
- Maintenance-free battery
- Can not be drive when charging



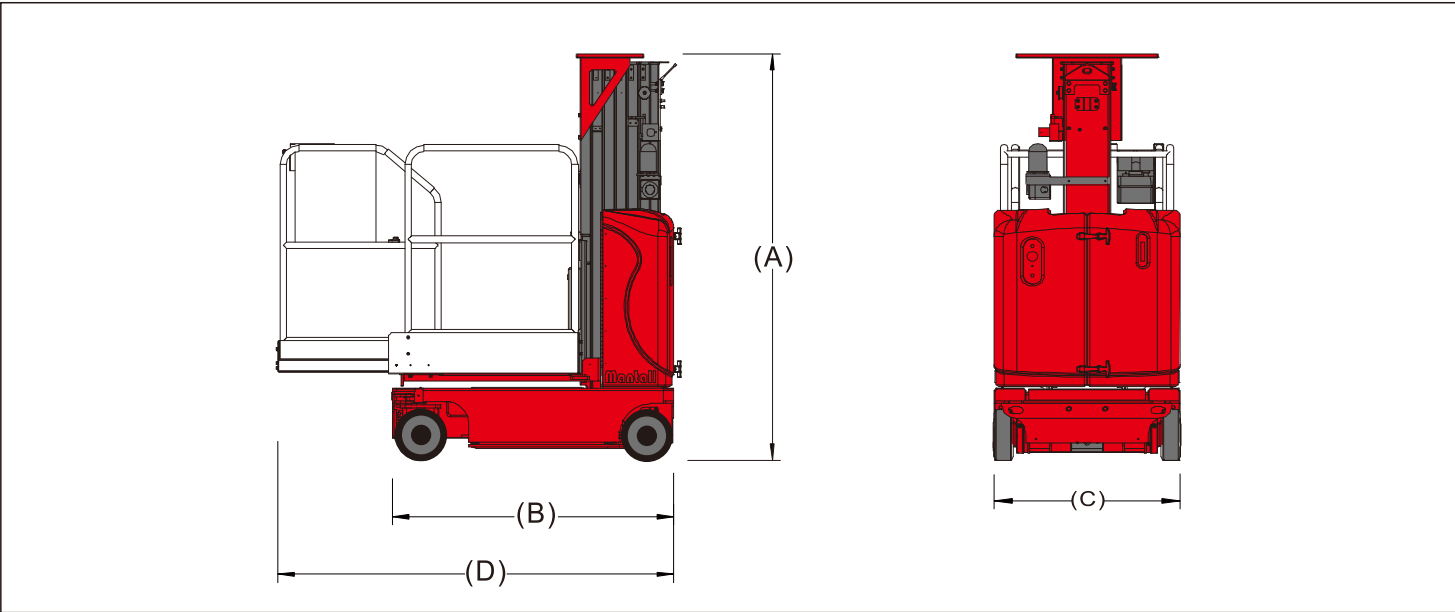
Model	SSAP55	SSAP65	SSAP80
Working Height (m)	5.5 m	6.5 m	8 m
Platform Height	3.5 m	4.5 m	6 m
Platform Size (Length*Width) Standard	0.9 x 0.75 m		
Standard Extension Platform	1.50 x 0.75 m		
Length Of The Machine With Platform Extended (D)	2.0 m		
Stowed Size (A*B*C)	1.6 x 1.40 x 0.8		2 x 1.4 x 0.8
Lift Capacity	230 Kg		160 Kg
Weight	716 Kg	993 Kg	1110 Kg
Raising/ Lowering Time	20/18s		24/21s
Ground Clearance	0.06 m		
Extension Platform-Lift Capacity*	115 Kg		
Driving Speed-Stowed	4.0 Km/h		
Gradeability	30%		
Inside Rotation Radius	0		
Outside Rotation Radius	1.42 m		
Control	Electro-hydraulic Control		
Tire	Seamless 250 mm x 80 mm x 200 mm		
Power Source	DC 24V 225Ah		
Hydraulic Tank Capacity	8.5 L		

SSAP Working Range



- The metric system height is 2 meters higher than platform height, the imperial height is 6 feet than platform height
- In the rising mode, the machine is designed to operate on a solid flat surface
- Climbing ability is suitable for driving on the slope, the slope classification reference operation manual
- Weight according to the options and standards vary from country to country

SSAP Collecting Chart





SSAP-J SERIES  
SELF-PROPELLED AERIAL WORK PLATFORM



Standard Features

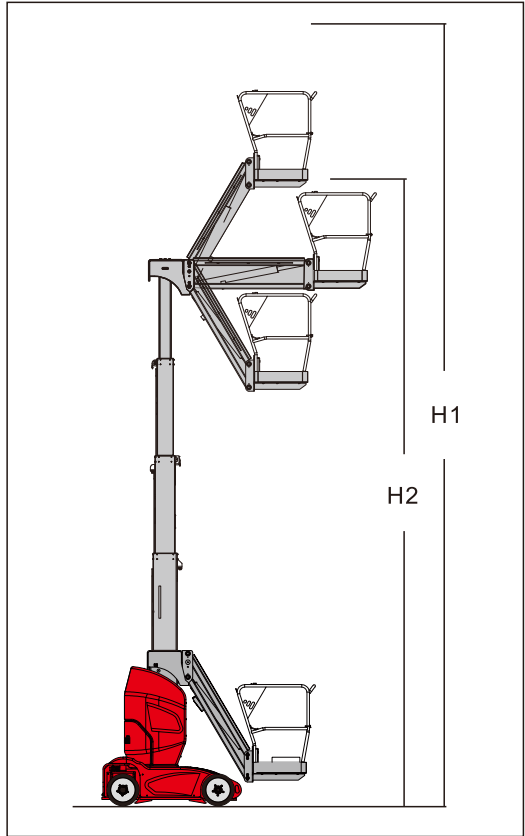
- The working height can reach up to 10m
- The lift capacity can reach to 200kg
- Standard platform with median sliding rod
- Auxiliary platform lowering system
- Ground emergency lowering valve
- Proportional raising and driving control
- Diagnosis system
- AC wiring to platform
- Adjustable work tray
- Lowering and tilting alarm
- Turn inter-radius is 0
- Double wheel brake
- Hydraulic brake release
- Pothole guards
- The rear shield mounted with hinge, Conveniently to close to all major electrical and Hydraulic Components
- Transportation fixing hole
- Wide type forklift handling notch
- Non-mark solid tire

Option Features

- Door type standard/ narrow/ wide platform
- Extendable platform
- Fiber glass platform
- Goods collection platform
- Motion alarm
- Tool box
- Platform positioning laser lights
- Fluorescent tubes box
- Working flashing beacon
- Top limit protection auto-stop device
- Maintenance-free battery
- Can not be drive when charging

Model	SSAP80J	SSAP100J
Working Height Max. H1 (m)	8	610
Platform Height Max. H2 m	6	8
Outreach Max. m	3.15	3.15
Lifting Capacity Kg	200	200
Weight Kg	2800	2870
Platform Size, (LxWxH) m	0.91*0.85*1.14	091*0.85*1.14
Stowed Size, (LxWxH)	2.76*0.99*1.99	2.76*0.99*1.99
Gradeability	23%	23%
Wheelbase m	1.2	1.2
Ground Clearance	0.075	0.075
Pothole Protection Board Ground Clearance, m	0.025	0.025
Turning Radius (Outside) m	1.82	1.82
Turning Radius (Inside) m	0	0
Jib Swing	-60°/+60°	-60°/+60°
Vertical Tilt Max	3	3
Driving Speed, Stowed (Km/h)	4.5	4.5
Driving Speed, Raised (Km/h)	0.7	0.5
Power Source	24V/240Ah	24/240Ah
Tire Size (mm)	406*125	406*125

SSAP-J Working Range



The New Design Lighter and More Flexible

SSAP-J Series Self-propelled Single Mast Aerial Work Platform has compact design, light weight, quickly up and down and self-propelled, can greatly improved its work efficiency. With unique 'Zero inside turning radius', it is flexible and used in narrow space. Shigemitsu SSAP100J is full with modernistic felling, using the streamlined design and the appearance of lines are strong. It is suitable for indoor narrow space, self-weight is light and stowed size is small (2.69m length \* 0.99m width \* 1.99m height). It has a working height of 10m and 3.2m working radius

SSAP Collecting Chart

