

INDOTARA

www.indotara.co.id

Jakarta - Head Office

Graha Kencana Building
Lt. 10 Suite 10F
Jl. Raya Perjuangan No. 88
Kebon Jeruk, Jakarta Barat 11530
Phone : 021 - 5020 3030
Email : sales@indotara.co.id

Bandung Office

Wisma HSBC
Lt. 6 Suite B
Jalan Asia Afrika No.116,
Kota Bandung, Jawa Barat 40112
Phone : 022 - 310 30 800
Email : sales-bdg@indotara.co.id

Surabaya Office

Bumi Mandiri Tower I
Lantai 10 Suite 1008
JL. Jend.Basuki Rachmat 129-137,
Surabaya 60271
Phone : 031 - 3313 3333
Email : sales-sby@indotara.co.id

Medan Office

Kompleks MMTC WAREHOUSE
Blok C-7
Jl. Pasar V, Pancing,
Medan, Sumut 20371
Phone : 061 - 50 300 600
Email : sales-mdn@indotara.co.id

BOMAC



TYPE

BCF120-450
CRANE FORKLIFT

HEAVY EQUIPMENT CRANE FORKLIFT

SIMPLE, RELIABLE, AFFORDABLE



www.indotara.co.id



COMPANY PROFILE

► BOMAC is dedicating the research and development of material handling equipment and construction machinery. The current products ranges cover:

1. Material handling equipment including heavy duty forklift, crane forklift, rough terrain forklift, telescopic forklift, reach stacker .
2. Construction machinery including wheel excavator, wheel loader.
3. Furnace-tending vehicle & Furnace-charging vehicle, which is customized for using in the metal smelting industry.



EXTRA WORK, EXTRA STRONG



•**The mission of BOMAC**

Dedicating to provide the most rugged and durable, high cost-effectiveness, high return rate material handling equipment, construction machinery products and service to our client.

•**The vision of BOMAC**

Let BOMAC become the respectable international brand.

•**The core value of BOMAC**

Customer oriented, staff foremost, insist on self criticism and Introspection, BOMAC is growing up always.

**EXTRA WORK
EXTRA STRONG**

**EXTRA WORK,
EXTRA STRONG**

BOMAC



BREAKTHROUGH



INNOVATION



GROWTH



**EXTRA WORK,
EXTRA STRONG**

BOMAC

Crane Forklift Product Features:

BCF120-450 crane forklift is a kind of compound innovation products which is developed by BOMAC. The rated load is 12ton, Max. lifting Moment of folding crane is 45 ton.m, The folding crane can be rotated at 360 degree.

1. Engine

- (1) Adopt Cummins or BOMAC turbocharger diesel engine with strong power, energy-saving and environmental friendly, Acan satisfy high efficiency operation requirements.
- (2) The layout of cooling radiator system is at right side, hydraulic motor controlling with hydraulic fan and hydraulic oil fan. This can ensure the heat balance of whole machine.

2. Transmission

- (1) Adopt High Quality transmission hydraulic gear box, CVT, big joint working condition traction, Reliable double variables system.
- (2) Neutral start-up device is installed on transmission controlling valve, this makes start-up of whole machine more safer.

3. Driving Axle

- (1) Front axle adopts heavy duty forklift driving axle, spiral bevel gear and Wheel rim planetary gear deceleration and increasing torsion. It is big load capacity and long life span. Six heavy duty caliper disc brake, postpositional gas storage can, reliable brake and safe operation.
- (2) Rear axle adopt horizontal hydraulic cylinder type power steering structure, tight steering structure and this can reduce the steering resistance and damage of tyres, can improve the ride during the drive.

4. Hydraulic system

- (1) Full Hydraulic load sensor steering system, small rear axle turning radius and more flexible steering.
- (2) Adopt double pump interflow working hydraulic system and it can lower oil and energy consumption.
- (3) Two sets of independent hydraulic system support two different working devices , shift valve control can separate the flow or combine the flow, trigger can stretch out and draw back for free and it can be adapted to different working conditions.
- (4) One handle can realize three sets working movement of forklift due to the pilot control, it can reduce hydraulic controlling pipe and can enlarge the space of cab.
- (5) Rotating part of folding crane is controlled by double rotary motor, which makes the rotation more smooth and improve the brake efficiency of motor.
- (6) Hydraulic system install the oil-return radiator and back press protection device to ensure heat balance of whole machine.

EXTRA WORK, EXTRA STRONG

5. Mast

- (1) Forklift Attachments are installed at front mast, folding crane is installed at the back of vehicle, folding crane is used for hanging the cargos and it has folding and telescopic function, which is convenient for travelling.
- (2) Adopt Integrated frame, five out-triggers are arranged at the front and rear of whole vehicle frame to ensure balance of whole machine.
- (3) Falling of mast adopt speed limit valve and press selection valve to reduce the compact of hydraulic system, it can decline the mast from top to the group when the engine flameout.
- (4) Inner and outside mast adopt rolling wheel match, movement wheel force saving structure and the mast has long life and high reliability.
- (5) Cab is arranged at left side, the top height of crane after folding is not higher than mast forklift. It can lower the overall height of the vehicle, more stable and better traffic performance.
- (6) High type, low type, standard mast, various attachments can be customized according to customer's requirements.

6. Fork carrier

- (1) Adopt quick-changing cargo loader, more shortcut.
- (2) hydraulic distance-adjust cargo fork and it is convenient for adjustment.
- (3) Cascade high strengthened fork, higher strength, more durable and higher life span.

7. Tyres

- Choose the bulk type depth heavy duty forklift tyre, rear steering axle can swing around the centre and has perfect traction and traffic performance.

8. Cab

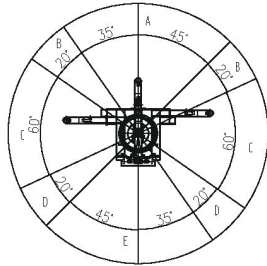
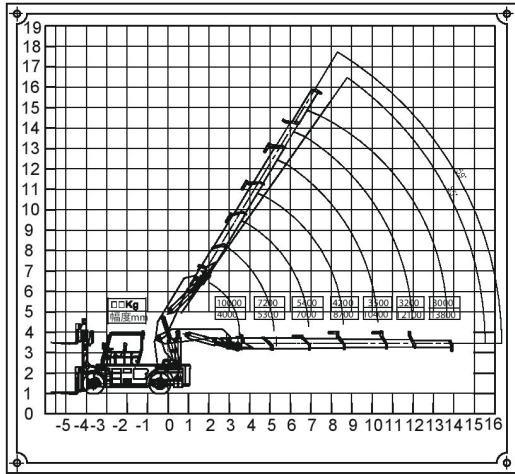
- (1) Adopt adjustable steering, aviation seat, more comfortable, automatic operation and flexible.
- (2) Adopt domestic high quality electronic components, maintenance-free battery, the wire adopts burning-resistance material, more durable. The optional parts include: fan, radio, cold and heat A/C, reversing displaying, Weighing machine.
- (3) Be with folding crane remote controller and wireless reception module. Folding Crane "Rotation, Folding, lifting, Expansion and Contracting" are controlled by remote wireless technology. The Driver can operate it at any position on the crane forklift. It is safe and reliable.
- (4) Using the torque limiter, it would automatic alarm when the operation of the arm beyond the working range, and automatic restriction of dangerous action, more safe operation.



**EXTRA WORK,
EXTRA STRONG**

BOMAC





Lifting operation direction diagram

Area A: Can follow 100% lifting performance curve data to operate
Area B: Can follow 40% lifting performance curve data to operate
Area C: can follow 35% lifting performance curve data to operate
Area D: can follow 40% lifting performance curve data to operate
Area E: can follow 70% lifting performance curve data to operate

BCF120-450 PARAMETER

Category	Items	Unit	BCF120-450
Dimension	Overall Length	mm	7600
	Overall width	mm	2250
	Overall height	mm	3188
	Standard lifting height	mm	3000
	Load Center	mm	600
	Wheel Base	mm	3250
	Front wheel Tread	mm	1677
	Rear Wheel Tread	mm	2013
Weight Parameter	Weight	kg	22000
	Rated Load	kg	12000
Driving Parameter	Rated Power/Rotational Speed	kW/r/min	110/2200
	Max. Travelling speed(with / without load)	km/h	23/26
	Min. Outside Turning Radius	mm	6500
	Mast Ground Clearance	mm	225
	Out-trigger Ground Clearance	mm	320
	Wheel quantity Front/Rear	/	4/2
	Front Tyre Size	/	10.00-20-18PR

Driving Parameter	Rear Tyre Size		/	10.00-20-18PR
	Gradeability (With Load/without load)		%	15
	Max. Hook Traction under full load		kN	70
Lifting operation parameter	Rated Lifting Capacity(Crane)		kg	12000
	Max. Rated lifting torque		Kg.m	45000
	Out-trigger distance	Horizontal out-trigger	mm	1580
		Vertical out-trigger	mm	4320
	Crane Length	Basic Crane	mm	5550
		Longest Crane	mm	14830
	Max. Lifting height	Basic boom	mm	7000
		Crane extended	mm	15500
	Boom frame min./max. Upward angle		(°)	10/59
	Mast Front/Rear tilt angle		(°)	6/12
Working speed	Max .Swinging speed (unloaded/loaded)		r/min	1/1
	Max. Lifting speed (loaded/unloaded)		mm/s	250/260
	Max decline speed (loaded/unloaded)		mm/s	400/250
	Angle time	lift upward(unloaded/loaded)	s	40/50
		lift downward(unloaded/loaded)	s	40/50